



www.district319.com

Vancouver's Ultimate Licensed Private Event Venue



About DISTRICT 319

District 319 is a 6,000 square foot stylish state-of-the-art private event and multimedia facility located in the city's urban core. Carefully transformed from its abandoned Asian movie house state to its contemporary revitalized form, District 319 offers an exciting and unparalleled event experience. A flexible floor plan accommodates live music, comedy, corporate presentations, sit-down dinner service, fundraising and private events.

District 319 is perfect for hosting groups between 100 - 300 guests.

Venue Bookings Contact: info@district319.com

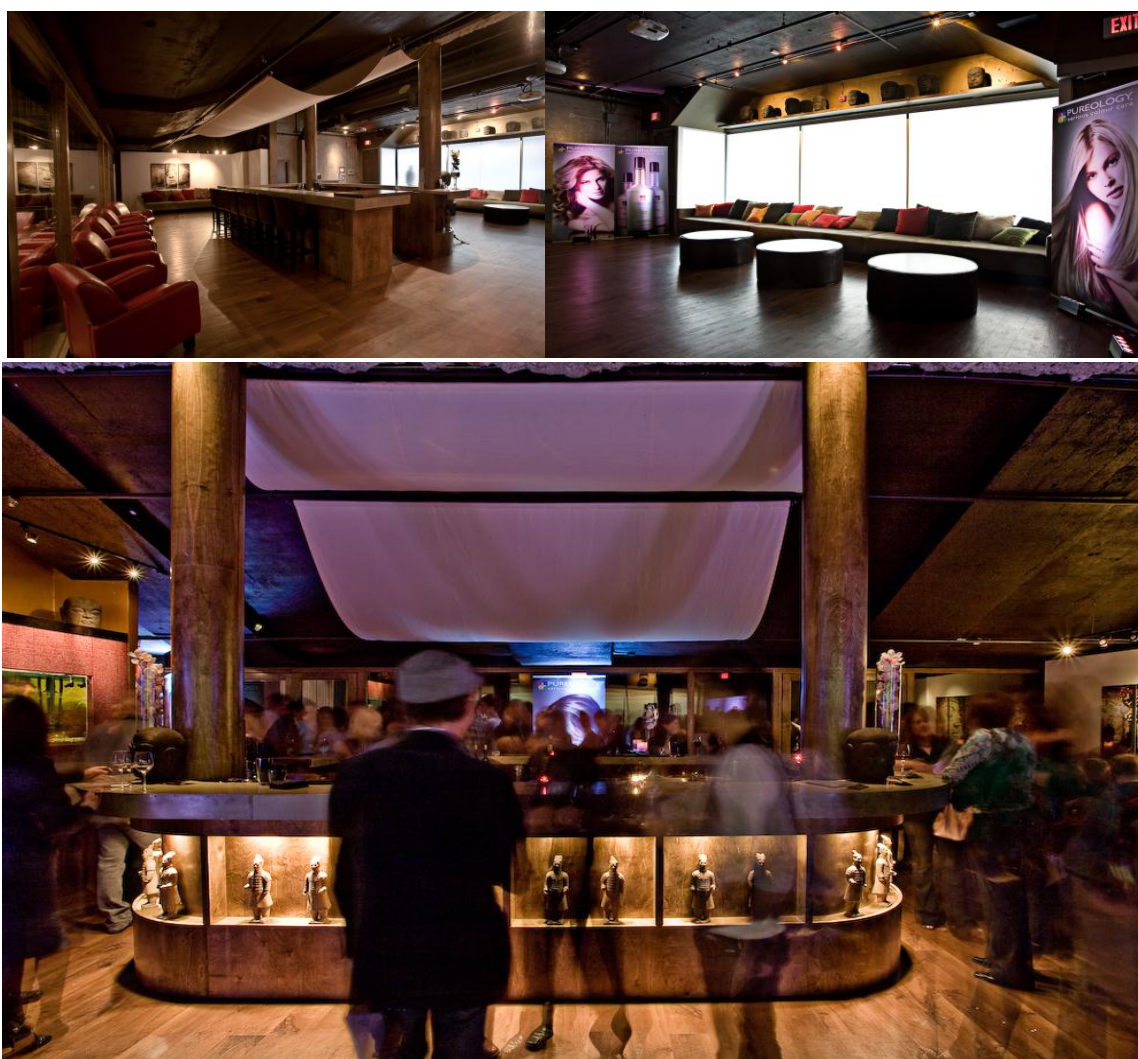
319 VENUE LOCATION INC. WWW.DISTRICT319.COM

319 Main St • Vancouver, B.C. • V6A 2S9 • Canada • Tel: 604 899-1077 • Fax: 604 889-1027

Venue Specifications

Lounge capacity – 100 Guests

- Full service bar
- Track Lighting on dimmers.
- Low level audio system.
- Handicap accessible.
- 1 permanent center bar with canopy suitable for projecting images.
- 2 frosted windows suitable for projecting images.
- 4 White wall panels suitable for framed and mounted items.
 - 120" W X 96" H
 - 58" W X 96" H
 - 60" W X 96" H
 - 50" W X 96" H
- 10 dark brown leather barstools.
- 3 dark brown round leather tables.
- Plush sofa seating for up to 20 guests.
- Floor plan can accommodate 32 dinner seating.
- Suitable for DJ set up and small live music groups.



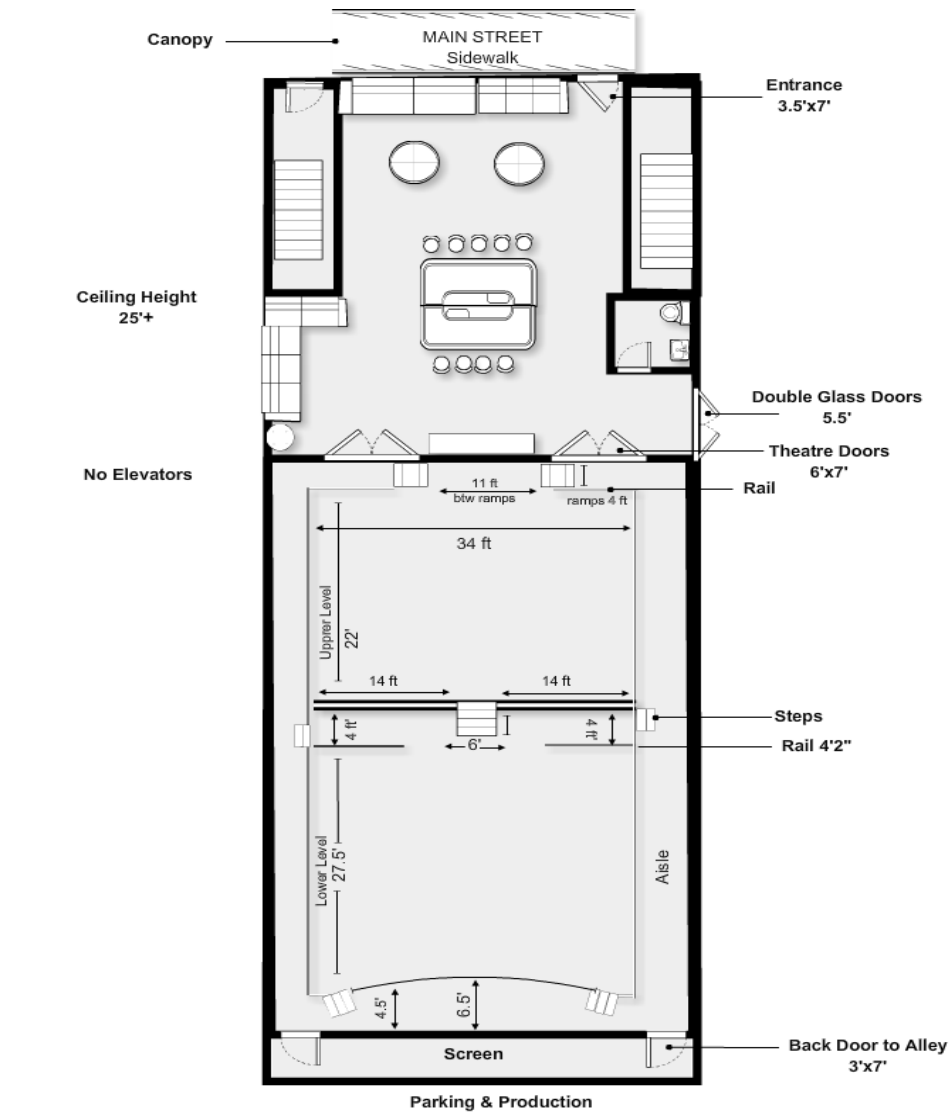
Venue Specifications

Main Room – 200

- 2 Tier Level Plywood Decking
 - Upper Level 36.5'W X 23'D
 - Lower Level 36.5'W X 29'D
- Recessed overhead lighting on Lutrom dimmer system
- Handicap access on upper level and washroom access
- 5.1 Dolby Digital 5.1 Cinema Sound (presentation use only, not available for DJ or Live Music)
- Screen 36'11" X 17" Lensa White Screen
- Throw from booth to screen – 65'
- Full service satellite bar service available for large receptions
- Wireless Internet
- Rear Loading
- Flexible floor plan can accommodate:
 - Presentation seating 200
 - Sit-down dinner 140
 - Capacity for guests flowing between Lounge and Main Room 300
 - Lounge set up, Live music, DJ, Dancing
 - Silent Auction tables, Casino, Fashion Show, Networking, Product Launch



LOUNGE AND MAIN ROOM – FLOOR PLAN



Power

- 200 amp panel behind screen
- 100 amp splitter box with cam locks (adapters required)
- 40 amp stove receptacle

VENUE SPECIFICATIONS

THE GALLERY (non-licensed)

The Gallery is a bright heritage-inspired room complete with white framed wall panels for project and hang art, skylights, polished concrete floors, exposed brick walls and lofty fir timber ceiling.

- Rear Loading with ramp (not ground level, hydraulic lift may be required for heavy items)
- Track Lighting on dimmers
- Plush sofa seating for up to 10-15 guests
- 25ft Red Carpet for indoor or outdoor use
- Staff washroom
- Front Area best uses: entrance, registration, product display, coat check
- Back Area best uses: catering prep, in-house equipment storage



- Ceiling height (not beam height) slopes from 14.5' at the entrance to 12' 10" at the divider
- White framed wall panels: (2) 96"W X 91"H (1) 110"W X 82"H
- Room divider walls: (3) 96"W X 96"H

