

ADVENTURE • GOLF • WELLNESS



RUNNING Y RESORT

EVENT PLANNING GUIDE





RUNNING Y RESORT

Meeting Space Capacity

Running Y Resort offers 81 Lodge guestrooms and up to 30 vacation rentals comprised of 2, 3 or 4 bedroom chalets and homes, on 3,600 pristine Oregon acres.

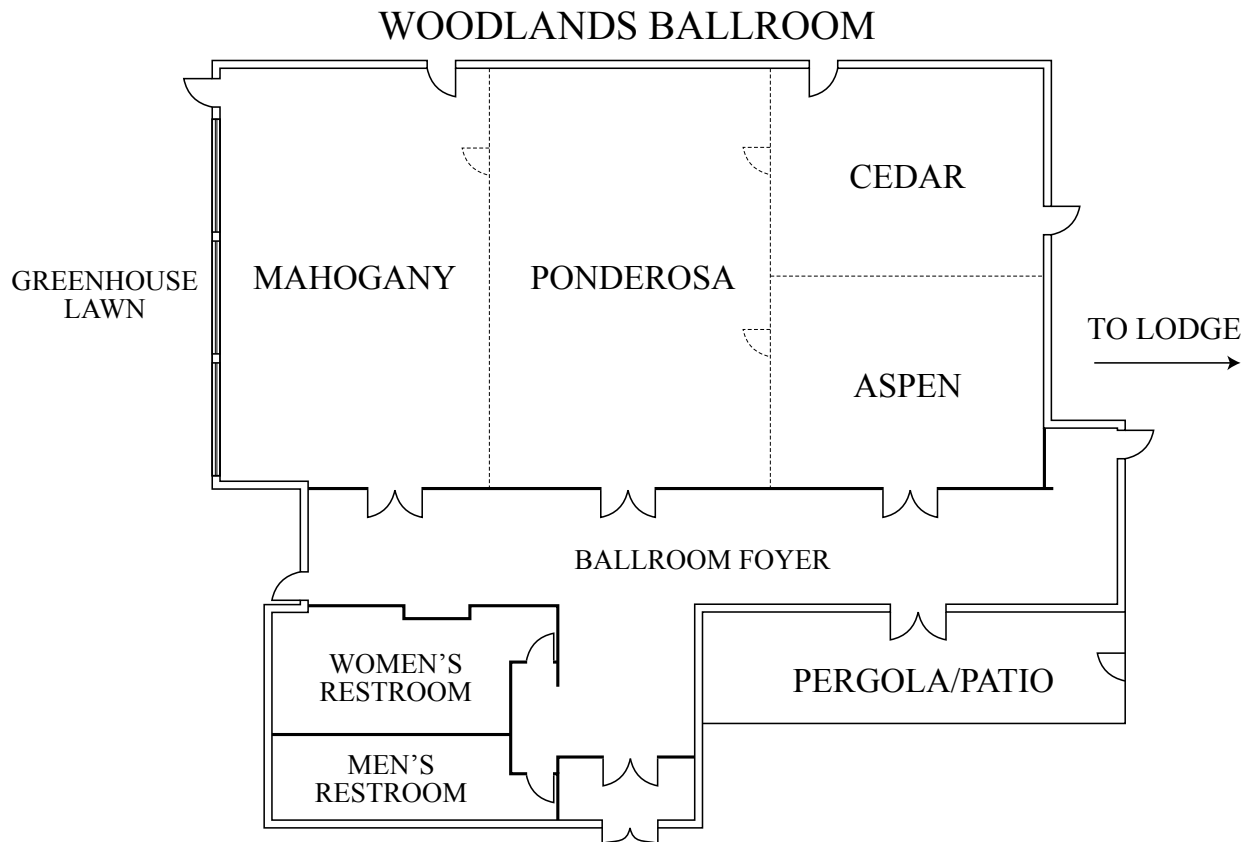
INDOOR											
	Dimensions (Ft.)	Size (Sq. Ft.)	High Point	Low Point	Banquet Rounds	Reception	Theatre	Classroom	Hollow Square	Conference	U-Shape
Woodlands Ballroom	96'x48'	4,608	14	12	240	400	450	225	-	-	-
-Mahogany	48'x32'	1,536	14	12	96	125	150	75	36	-	42
-Ponderosa	48'x32'	1,536	14	12	96	125	150	75	36	-	42
-Cedar	24'x32'	768	14	12	56	65	75	35	18	18	21
-Aspen	24'x32'	768	14	12	56	65	75	35	18	18	21
Ballroom Foyer / Prefunction Space	100'x12'	1,200	9	9	-	100	-	-	-	-	-
Lodge Conference Room	40'x30'	1,200	12	12	100	120	130	60	29	40	34
-Payne Canyon Room	20'x30'	600	12	12	50	60	65	30	14	20	17
-Rainbow Bay Room	20'x30'	600	12	12	50	60	65	30	14	20	17
Lodge Annex	45'x36'	1,620	12	12	80	120	-	-	-	-	-
Lodge Boardroom	26'x18'	504	12	12	-	-	-	-	-	12	12
Lodge Mezzanine	34'x12'	408	8	8	16	20	-	-	-	-	-
Juniper Hall	72'x38'	2,736	12	12	208	208	208	189	-	-	78
Activities Room	35'x23'	805	9	9	60	80	-	-	-	-	-
Upper Ruddy Duck Semi-Private	36'x13'	468	18	18	28	75	-	-	-	-	-
Ruddy Duck Restaurant (buyout)	36'x29'	1,044	8	8	75	75	-	-	-	-	-
OUTDOOR											
Pergola / Patio	49'x20'	980	-	8	72	98	-	-	-	-	-
Greenhouse Lawn	100'x95'	9,500	-	-	160	400	-	-	-	-	-
Lodge Boardroom Balcony	39'x6'	234	-	-	-	22	-	-	-	-	-
Pavilion	89'x30'	2,670	16	-	80	200	200	-	-	-	60
Pavilion Lawn	125'x80'	10,000	-	-	160	400	-	-	-	-	-
Sports Center Lawn	185'x73'	13,505	-	-	200	600	-	-	-	-	-
Golf Lawn	100'x50'	5,000	-	-	260	400	-	-	-	-	-
Clubhouse Deck	25'x17'	425	7	7	35	42	-	-	-	-	-
Mobile Grill Grounds	52'x40'	2,080	-	-	130	170	-	-	-	-	-
Ruddy Duck Patio	73'x25'	1,825	-	-	112	150	-	-	-	-	-



RUNNING Y RESORT

Woodlands Ballroom

Located adjacent to Running Y Lodge in a separate building, the Woodlands Ballroom is the largest, most flexible meeting space on property. The ballroom is divisible into four separate breakout rooms to accommodate a variety of meeting needs and offers natural light, ample prefunction space, as well as direct access to outdoor lawn and patio areas.

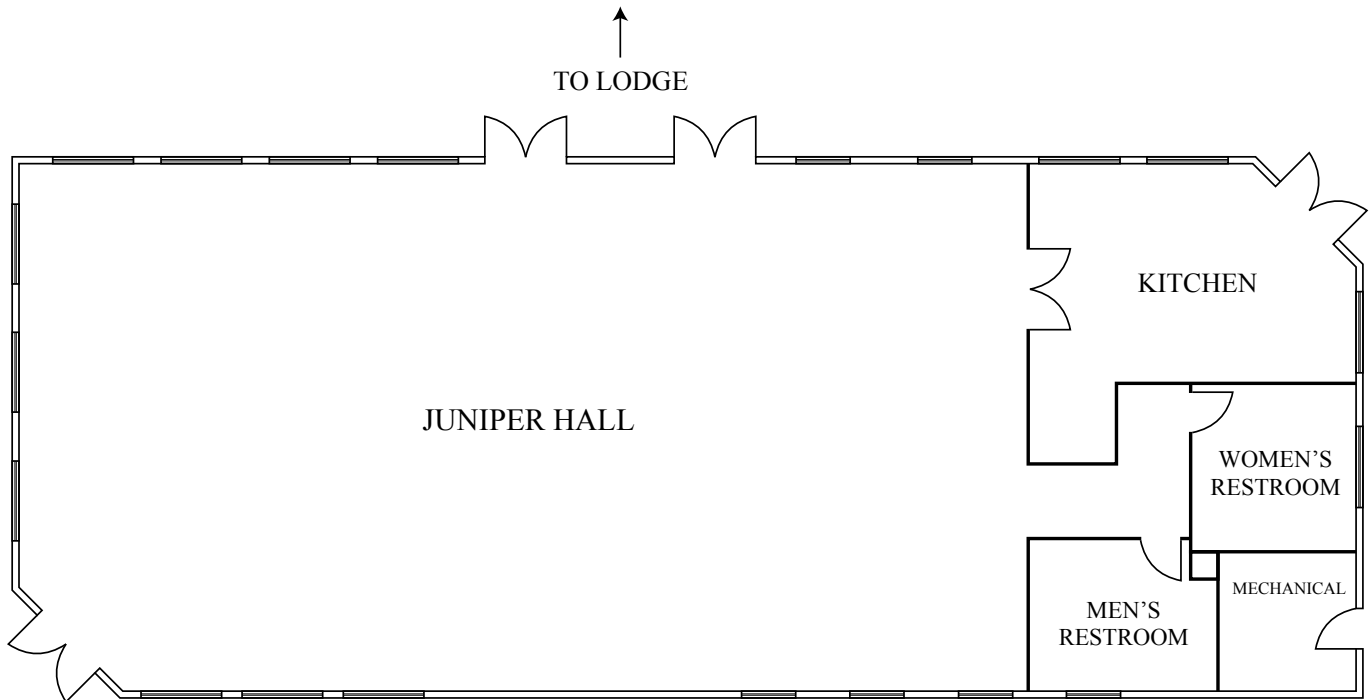




RUNNING Y RESORT

Juniper Hall

A stand-alone building located across from the Running Y Lodge Arrival Center, Juniper Hall is the Resort's newest contemporary meeting space. Unveiled in Fall 2022, this space is an airy, blank canvas to support any creative meeting vision. The room is wrapped in windows and offers the best in audio-visual technology to elevate any special event.

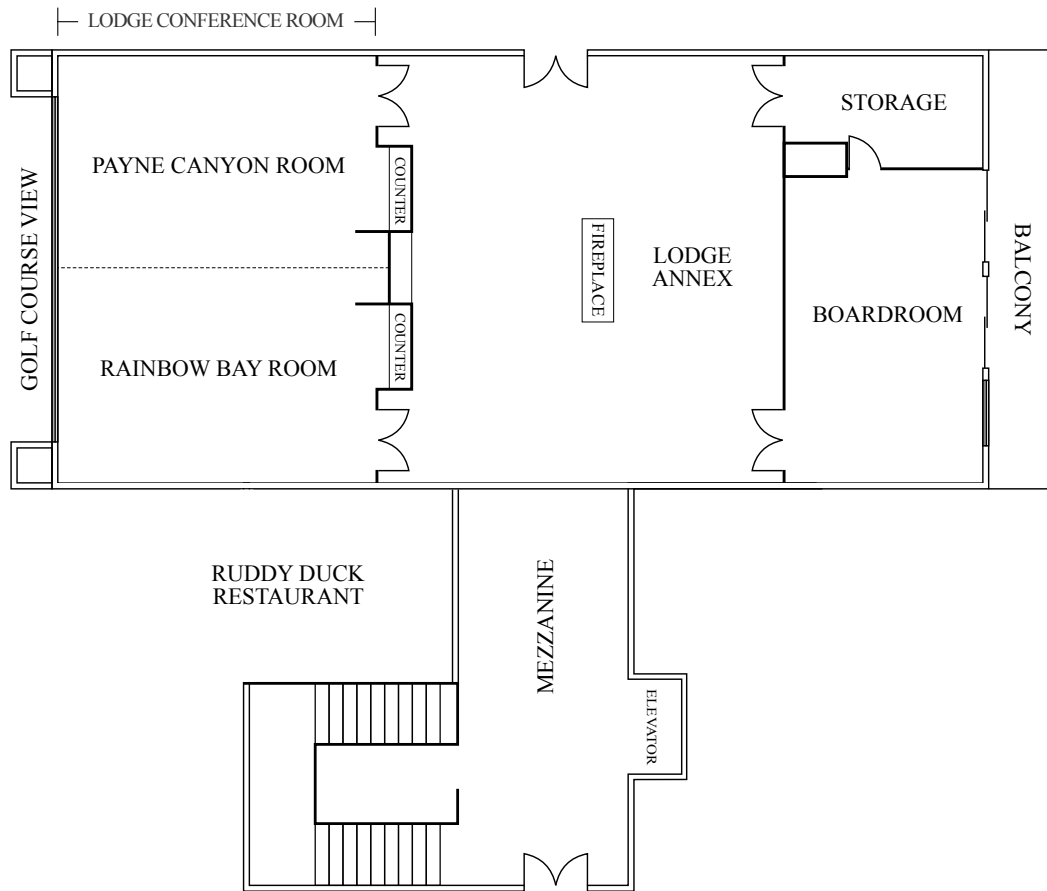




RUNNING Y RESORT

Lodge Meeting Space

The Running Y Lodge is at the heart of the Resort's gathering spaces. The third floor Lodge meeting space includes the Lodge Conference Room (divisible into two breakout rooms), Annex, Boardroom and Mezzanine. These spaces are often used for intimate meetings or private meals that overlook the golf course while being steps away from guestrooms. The Lodge is also home to our Ruddy Duck Restaurant and Patio, located on the Main level.

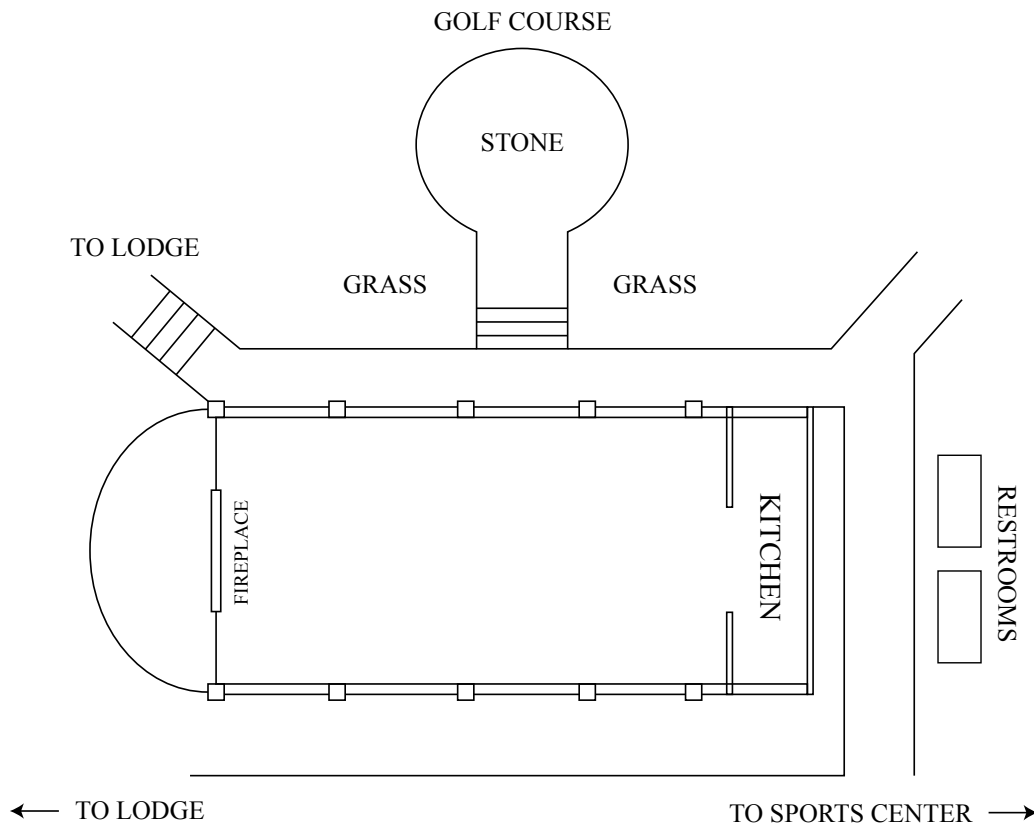




RUNNING Y RESORT

Outdoor Pavilion & Lawn

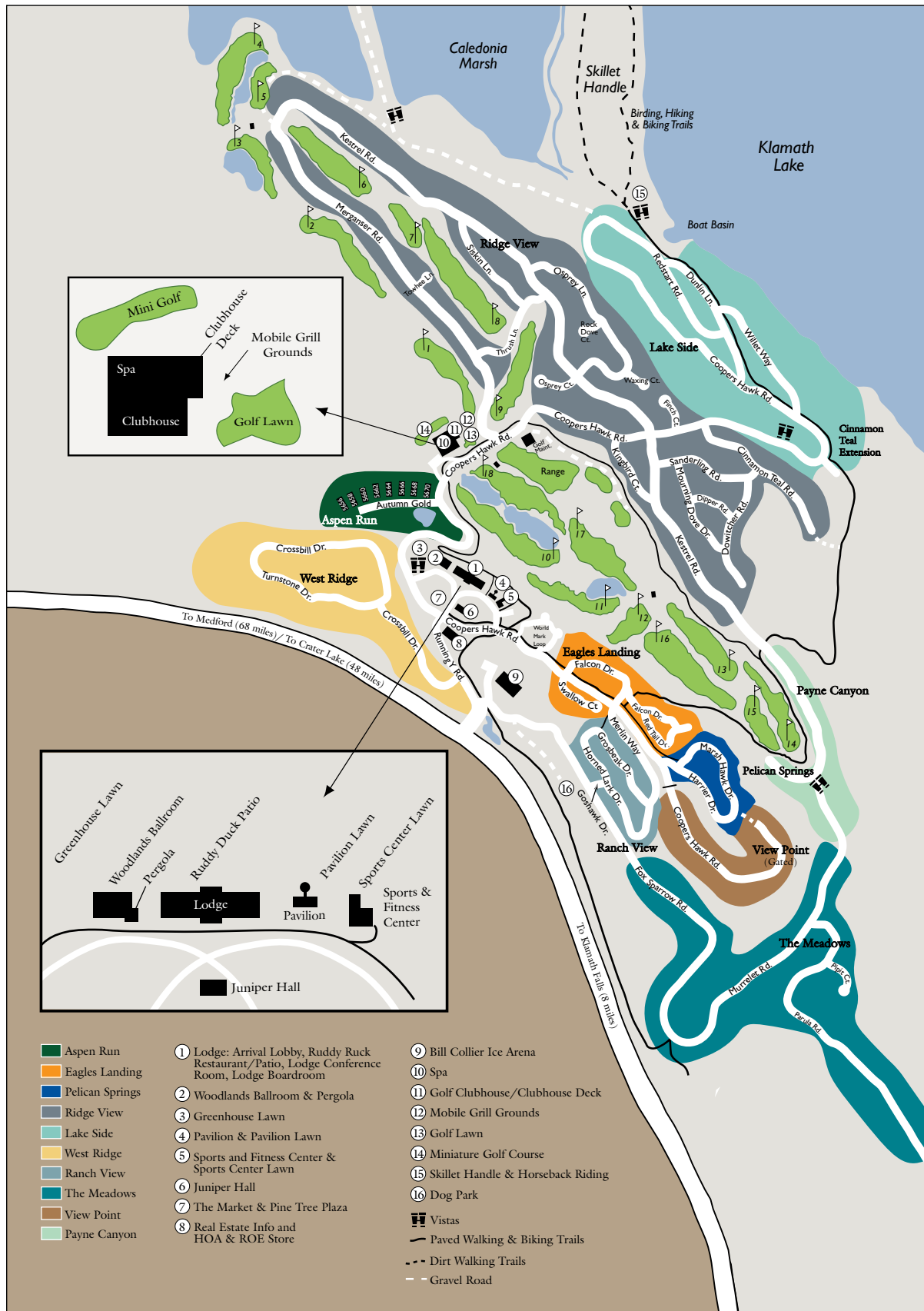
A spacious and casual outdoor venue with a panoramic backdrop, conveniently located between Running Y Lodge and Sports Center. Our most-desired outdoor space for wedding ceremonies, receptions, special events and outdoor group dining with sweeping views of the award-winning golf course.





RUNNING Y RESORT

Property Map





RUNNING Y RESORT

Airport & Transportation

Running Y Resort, located just over an hour from the Rogue Valley International-Medford Airport (MFR), is southern Oregon's premier destination at the intersection of adventure, golf and wellness. Guests may also access the Resort via the Crater Lake-Klamath Regional Airport (LMT), which is 11.6 miles away.

NON-STOP SERVICE FROM 12 DESTINATIONS TO MEDFORD BY THE FOLLOWING AIRLINES:



Popular Group Activities

(Depending on seasonality)

- On and off site group dining
- Arnold Palmer Signature 18-hole Golf Course
- Natural grass 18-hole putting mini golf course
- Spa Treatments
- Horseback Riding
- Hiking and Mountain Biking
- Bird Watching
- Stargazing
- Kayaking and Fishing
- Sport courts: pickleball, tennis, ping pong
- Fitness Classes: such as spin, yoga, meditation
- Ice and Roller Skating on property
- Crater Lake National Park
- Lava Beds National Monument
- Zip Lining
- Cross Country Skiing
- Snowshoeing
- Snowmobiling
- Boutique Shopping
- Arts & Culture





RUNNING Y RESORT

Contact Us

sales@runningy.com • 541-850-5500

