

DISTRICT OF INVERMERE

BYLAW NO. 1622

A bylaw to amend the fee structures for the use of property held by the municipality for pleasure, recreation or community uses.

WHEREAS the *Community Charter* empowers Council to regulate, prohibit, impose requirements, and impose fees in relation to public places and buildings and other structures;

WHEREAS it is deemed desirable and expedient to amend these fees;

NOW THEREFORE the Council of the District of Invermere, in open meeting assembled, enacts as follows:

1. This Bylaw shall be cited as "Parks and Facilities Amendment Bylaw No. 1622, 2022."
2. Schedule "A" of "Parks & Facilities Bylaw No. 1559, 2019" is repealed and replaced with Schedule "A" attached to and forming part of this bylaw.

Read a First Time this 14th day of June, 2022.

Read a Second Time this 14th day of June, 2022.

Read a Third Time this 14th day of June, 2022.

Third reading appealed, amended, and reread this 12th day of July, 2022

ADOPTED this ____ day of August, 2022.

MAYOR

CHIEF ADMINISTRATIVE OFFICER

Certified a true copy of Bylaw No. 1622, 2022
this ____ day of _____, _____.

Corporate Officer

SCHEDULE "A"
FEES AND CHARGES

1. COLUMBIA VALLEY CENTRE

a. Registered not-for-profit rates

CLASSIFICATION	2022	2023	2024	2025
full hall, full day (includes kitchen, NO propane)	\$150	\$153	\$156	\$160
full hall, per hour	\$35	\$36	\$37	\$38
half hall, full day	\$75	\$77	\$79	\$81
half hall, per hour	\$25	\$26	\$27	\$28

b. Youth/Senior/Community Groups/Leisure

CLASSIFICATION	2022	2023	2024	2025
full hall, full day (includes kitchen, NO propane)	\$250	\$255	\$260	\$265
full hall, per hour	\$40	\$41	\$42	\$43
half hall, full day	\$125	\$127	\$129	\$131
half hall, per hour	\$30	\$31	\$32	\$33

c. Private/Commercial

CLASSIFICATION	2022	2023	2024	2025
full hall, full day (includes kitchen, NO propane)	\$650	\$663	\$676	\$690
Weekend Package (from 5:00 pm Friday to noon Sunday)	\$1,075	\$1,095	\$1,115	\$1,135
full hall, per hour	\$80	\$82	\$84	\$86
half hall, full day	\$325	\$331	\$337	\$343
half hall, per hour	\$55	\$56	\$57	\$58

d. Additional Fees

CLASSIFICATION	2022	2023	2024	2025
damage deposit	\$500	\$500	\$500	\$500
non-routine service call	\$100	\$102	\$104	\$106
kitchen (use of propane)	\$60	\$61	\$62	\$63

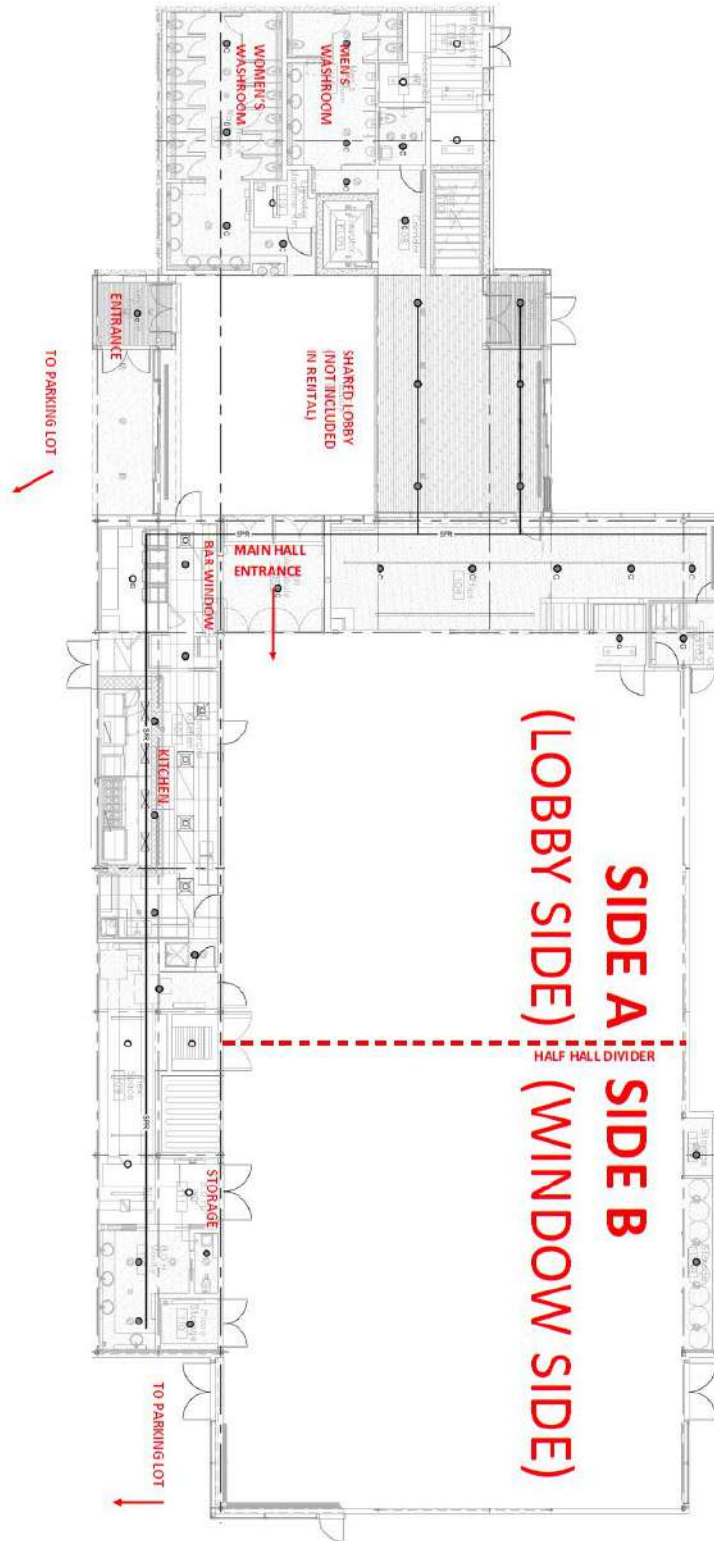
e. Add-ons

CLASSIFICATION	2022	2023	2024	2025
roof top patio per day	\$275	\$280	\$285	\$290
roof top patio per hour	\$55	\$56	\$57	\$58
set up tables and chairs (setup diagram to be supplied by renter)	\$500	\$510	\$520	\$530
8' banquet tables (minimum 10)	\$5 each	\$5 each	\$5 each	\$5 each
set up and take down of theatre seats	\$200	\$204	\$208	\$212
curtains (includes TECHNICIAN)	\$75	\$77	\$79	\$81
portable stage	\$200	\$204	\$206	\$208

f. Audio and Video Offerings

CLASSIFICATION	2022	2023	2024	2025
audio and video (microphone, sound system, projector, screen, AND TECHNICIAN) For example, celebration of life, awards ceremonies, presentations, conferences	\$400 (minimum 4 hours)	\$408 (minimum 4 hours)	\$416 (minimum 4 hours)	\$424 (minimum 4 hours)
audio only (microphone, sound system, podium, AND TECHNICIAN) For example, recitals, gala dinner, fashion show, wedding	\$300 (minimum 4 hours)	\$306 (minimum 4 hours)	\$312 (minimum 4 hours)	\$318 (minimum 4 hours)
video only (screen, projector, AND TECHNICIAN) For example, events, meetings, background images	\$300 (minimum 4 hours)	\$306 (minimum 4 hours)	\$312 (minimum 4 hours)	\$318 (minimum 4 hours)
technician over and above minimum 4 hours, per hour	\$60	\$61	\$62	\$63

g. Columbia Valley Centre layout (for clarity purposes)



2. CPR LODGE:

CLASSIFICATION	2022	2023	2024	2025
not-for-profit/meetings, per day	\$50	\$51	\$52	\$53
not-for-profit/meetings, per hour	\$20	\$21	\$22	\$23
private/commercial - weekend package (from noon Friday to noon Sunday)	\$350	\$357	\$364	\$371
private/commercial - Monday to Thursday, per day	\$100	\$102	\$104	\$106
private/commercial - Friday to Sunday, per day	\$250	\$255	\$260	\$265
private/commercial, per hour	\$30	\$31	\$32	\$33
non-routine service call	\$100	\$102	\$104	\$106
damage deposit	\$150	\$150	\$150	\$150

3. MNAP CONCESSION:

CLASSIFICATION	2022	2023	2024	2025
youth, per day	\$30	\$31	\$32	\$33
adult, per day	\$50	\$51	\$52	\$53
non-routine service call	\$100	\$102	\$104	\$106
damage deposit	\$50	\$50	\$50	\$50

4. PARKS/GREENSPACE (including, but not limited to Mount Nelson Athletic Park, Rotary Ball Park, Skatepark, Ball Diamonds, Play Fields, Tunnacliffe Heights Park, Pynelogs greenspace, Pothole Park, Westside Park, Lions Park, Castlerock Park, etc.):

SPORTS	2022	2023	2024	2025
adult sports, per game up to 2 hours maximum	free	free	free	free
adult sports, per day	\$30	\$31	\$32	\$33
adult sports, per season	\$500	\$510	\$520	\$530
for profit sports camps, per day	\$50	\$51	\$52	\$53
school district/local youth leagues	free	free	free	free
fitness classes up to 2 hours max.	free	free	free	free
fitness classes, per day	\$50	\$51	\$52	\$53
non-routine service call	\$100	\$102	\$104	\$106
damage deposit	\$100	\$100	\$100	\$100

PRIVATE FUNCTIONS/EVENTS	2022	2023	2024	2025
for profit/private, per hour up to 2 hours maximum	free	free	free	free

for profit/private, per day	\$300	\$306	\$312	\$318
not-for-profit, per hour up to 2 hours maximum	free	free	free	free
not-for-profit organizations, per day	\$100	\$102	\$104	\$106
non-routine service call	\$100	\$102	\$104	\$106
damage deposit	\$100	\$100	\$100	\$100

All functions (including free usage) MUST have appropriate liability coverage and damage deposit and hall rental to be paid for in full before the date booked.