

BURLINGAME WOMAN'S CLUB

FACILITY RENTAL RATES

Located in the heart of downtown Burlingame Woman's Club offers unique event space for any occasion, including:

- Corporate Events
- Group Meetings
- Parties and Celebrations
- Memorial Services
- Rehearsals & Weddings

Auditorium Configurations

43' wide x 34' long
100 round tables
175 theater setup
48 classroom setup
39 U-shaped seating
54 hollow-square seating

Included with Rentals

ADA-compliant facility
High-speed Wi-Fi
Exclusive access to the facility and outdoor spaces
Access to the kitchen for prep
Chairs (175)
Tables (10 5' rounds, 10 6' rectangles, 18 34" card tables)
Black tablecloths
Baby grand piano

Rental Proceeds

Since its founding in 1907, the Burlingame Woman's Club has focused on community service and supporting local nonprofits. Therefore, funds from Clubhouse rentals go to our community service programs. Rental funds also help maintain the Clubhouse facility, ensuring its legacy in the community.

Availability & Pricing

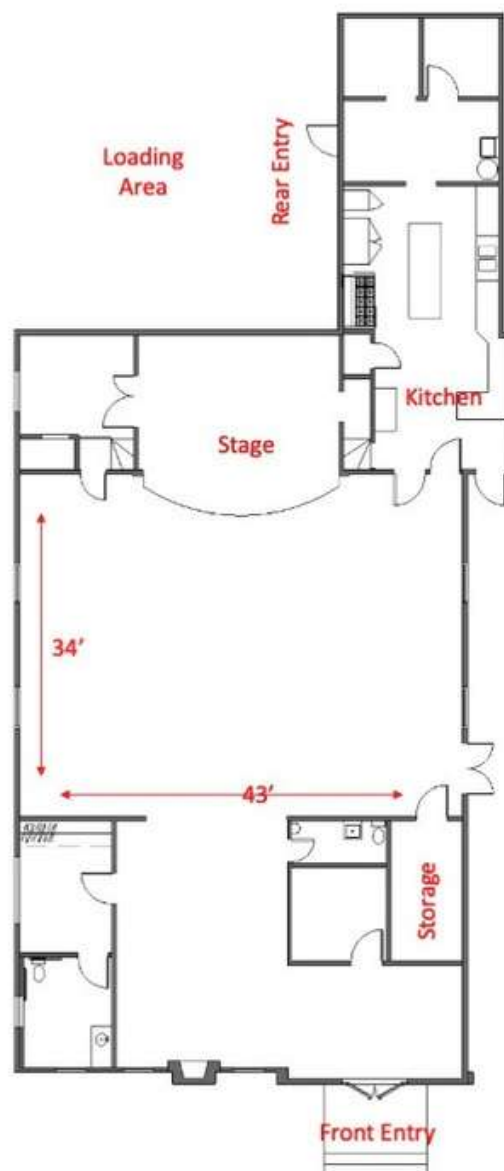
The Burlingame Woman's Club is available for rental year-round, seven days a week. Special pricing is available for nonprofit organizations. Price sheet is on the following page. For information about availability and multi-day, please email us at BWC94010@gmail.com.

Location

Half a block off Burlingame Ave.
Lots of public parking
Unloading area behind the building

Maximum Capacity

100 seated at tables
175 mingling or theatre setup



BURLINGAME WOMAN'S CLUB

FACILITY RENTAL RATES

| <u>Facility Rental</u> | <u>Standard Rate</u> | <u>Member/Non-Profit Rate</u> |
|--|--|---|
| Monday-Thursday* | 4-hour minimum: \$750* 8:00am-12:00pm 1:00pm-5:00pm 6:00pm-10:00pm Full day: \$1,200* 8:00am-5:00pm | 4-hour minimum: \$600* 8:00am-12:00pm 1:00pm-5:00pm 6:00pm-10:00pm Full day: \$960.00* 8:00am-5:00pm |
| Friday• Day Time | 4-hour minimum: \$750* 8:00am-12:00pm 1:00pm-5:00pm | 4-hour minimum: \$600* 8:00am-12:00pm 1:00-5:00pm |
| Friday* Evening | 4-hour minimum: \$2,000* 6:00pm-10:00pm Additional hours: \$350/hr 10:00pm-12:00am | 4-hour minimum: \$1,600* 6:00pm-10:00pm Additional hours: \$350/hr 10:00pm-12:00am |
| Saturday & Sunday* Day Time | 4-hour minimum: \$1,000* 8:00am-12:00pm 1:00pm-5:00pm | 4-hour minimum: \$800* 8:00am-12:00pm 1:00pm-5:00pm |
| Saturday & Sunday* Full Day | Full Day: \$1,600* 8:00am-5:00pm | Full day: \$1,280* 8:00am-5:00pm |
| Saturday & Sunday* Evening | 4-hour minimum: \$2,000* 6:00pm-10:00pm Additional hours: \$350/hr 10:00pm-12:00am | 4-hour minimum: \$1,600* 6:00pm-10:00pm Additional hours 10:00pm-12:00am |
| Friday, Saturday, & Sunday* Buy Out | All Day: \$3,500* All non-member rentals 8:00am-10:00pm Additional hours: \$350/hr 10:00pm-12:00am | All Day: \$3,200* Members only 8:00am-10:00pm Additional hours: \$350/hr 10:00pm-12:00am |

***plus a \$200 cleaning fee for all rentals**