

Event Rentals Brochure

The Haas-Lilienthal House
2007 Franklin Street
San Francisco, CA 94109

Rental Agent- Heather R. Kraft
hlhrentals@sfheritage.org
415 441-3000 x17

www.haas-lilienthalhouse.org
www.sfheritage.org

A Truly Unique Celebration

Constructed in 1886 by Jewish immigrants, this Queen Anne gem embodies both the progressive spirit that distinguishes San Francisco's cultural landscape and the Victorian grandeur of its built environment.

The House is a timeless and sophisticated setting for any event or special occasion.

For more information on renting, contact Rental Agent:
hhlrentals@sfheritage.org
 (415) 441-3000 x17



- ❖ **Weddings** – Utilize all three floors.
 - Second Floor has two large rooms for use as dressing rooms for the bride and groom.
 - First Floor Parlors can be used for ceremony and reception.
 - Ballroom ideal for seated dinner and dancing.
 - Courtyard in back of House for ceremonies and receptions.
- ❖ **Cocktail Receptions** – Utilize First Floor and/or Ballroom.
 - First Floor Parlors and/or Dining Room for drinks and appetizers.
 - Ballroom ideal for music and dancing.
- ❖ **Luncheons/Dinner Parties** – Utilize First floor and/or Ballroom.
 - Up to 50-60 guests can be seated in the First Floor parlors and Dining Room.
 - Up to 16 guests can be seated at the Dining Room table.
 - Up to 100 guests can be seated in the Ballroom.
- ❖ **Daytime Retreats/Meetings** – Dining Room and/or Ballroom.
 - Up to 100 guests in Ballroom for presentations.
 - Dining Room as conference meeting room.
 - Can accommodate lectures, presentations, and music performances (bands limited to four pieces including vocalist)

Maximum Guest Capacity in Primary Event Spaces is 100

Rental Rates:

Day of week	Base Rate-4hr min	Additional Hours
Monday-Thursday	\$1500	\$375
Friday	\$2000	\$500
Saturday	\$2225	\$556
Sunday	\$1900	\$475

Contact Rental Agent for custom quotes for photo, film and video shoots.

Non-Profit, Student and Military Discounts available as well.



AMENITIES INCLUDED WITH RENTAL:

- ❖ Use of all museum area ONLY (Ballroom, First Floor, and front half of Second Floor)
- ❖ Full Kitchen on site and outdoor cooking area
- ❖ Use of fireplace in Second Parlor on the First Floor
- ❖ Use of Parlor Grand Piano
- ❖ WiFi throughout museum spaces
- ❖ 50" wall-mounted Samsung HD video monitor with USB and HDMI connections
- ❖ Use of BOSE Soundwave Stereo System with optional microphone and iPod hookup
- ❖ One-year membership to San Francisco Heritage (individuals and couples only)

ADDITIONAL AMENITIES:

- ❖ Trained Heritage Docent to lead short tours and/or answer questions about the Haas-Lilienthal House during event. In costume by request - \$100 flat fee

IN HOUSE EQUIPMENT:

- ❖ Digital projector and screen
- ❖ 65 Mahogany Chiavari chairs with black cushions
- ❖ Ten 60" round wooden tables
- ❖ Three 6' Rectangular tables
- ❖ Ten 36" round wooden tables
- ❖ One 40" round wooden table
- ❖ One 50" round wooden table

Special Wedding Rental Packages

8-Hour Rental:

- Suggested outline for 8 hour rental
 - 1-2 hour set-up
 - 5-6 hour event period
 - 1 hour clean-up

Mon-Thurs: \$3000

Friday: \$4000

Saturday rate: \$4450

Sunday rate: \$3800

***weekday rates available upon request**

10-Hour Rental Package:

- Suggested outline for 10 hour rental
 - 1-3 hour set-up
 - 6-7 hour event period
 - 1 hour clean-up

Mon-Thurs: \$3750

Friday: \$5000

Saturday rate: \$5563

Sunday rate: \$4750

***weekday rates available upon request**

Preferred Caterers and Vendors

An experienced, well-staffed caterer is essential to the success of any event. The following caterers are pre-approved and have demonstrated a high level of care and attention to both the House and the client. If you are considering using a caterer that is not on this list, please let the Rental Agent know in advance.

CATERERS:

Ann Walker

Contact: Ann Walker
415 460-9885
www.annwalkercatering.com

Work of Art

Contact: Jacqueline Burns
415 552-1000
www.woacatering.com

Small Potatoes

Contact: Pink Lee
415 896-1296

Taste Catering and Events

Contact: Susana Munoz
415 330-2420 ext. 12
www.tastecatering.com

Hugh Groman Group

Contact: Hugh Groman
hugh@gromangroup.com
www.gromangroup.com

49 Square

Contact: Mark Walker
415 834-5348
www.49sqcatering.com

BiRite

Contact: Sue MacKimmie
415 321-8070 x1
www.biritemarket.com

McCalls

Contact: Cyrus
415 552-8550

Delicious

Contact: Jan Goldberg
415 453-3710
www.deliciouscatering.com

EPEC-Eat Play Events & Catering

Contact: Aaronette King
510 274-8335
www.eatplayeventsandcatering.com

Betty Zlatchin Catering

Contact: Brian Erlich
415 641-8599
www.bettyzlatchin.com

Culinary Eye

Contact: Kristen
415 824-1225
www.culinaryeye.com

La Bonne Cuisine

Contact: Cynthia Garcia
garcia.cynthia4@gmail.com
www.labonnecuisine.com

Fork and Spoon Productions

Contact: Jennifer or Jonathan
415 552-7130
www.forkandspoonproductions.com

Left Coast Catering

Contact: Suzanne/Katheryn
415 934-0600
www.leftcoastcatering.com

Foxtail

Contact: Rhonda Davidson
415 282-2641
www.foxtailcatering.com

ADDITIONAL VENDORS:

Bartending Services:

Elixir To Go
Contact: H. Joseph Ehrmann
www.elixirtogo.com
415 710-9053

Best Beverage Catering
415 642-2410
www.bestbeverage.com

Photography/Photobooth/Video:

Tim Daw
415 283-6147
tim@timdawphotography.com
www.timdawweddings.com

Tomfoolery
www.tomfooleryphotobooth.com

Music/Entertainment:

Chris Huson - Piano
415 381-2660
Jazz. American standards

Kent Strand – Piano
415 982-8000
kent@baymusic.com

Jason Martineau - Piano
jason@jasonmartineau.com
www.jasonmartineau.com

Mancub – DJ
Contact: Chip Corwin
djmancub@hotmail.com
www.mancubsf.com

Love in the Mix – DJ
Contact: Dan
415 729-3495
www.loveinthemix.com

ALL EARS DJ
Contact: Richard G
785 766-2596
allearsdj@gmail.com
allearsdj.com

Party Rentals:

Bright Event Rentals
415 570-0470

Abbey Party Rentals
415 715-6900

Heirloom Events Boutique Rentals
707 778-1078
heidi@heirloomevents.com

Parking:

As there is no parking onsite, we encourage alternative forms of transportation. If you choose to drive, we highly recommend four nearby garages operated by **Express Parking Services**. They may offer group rates and custom valet services through **California Parking, as well**.

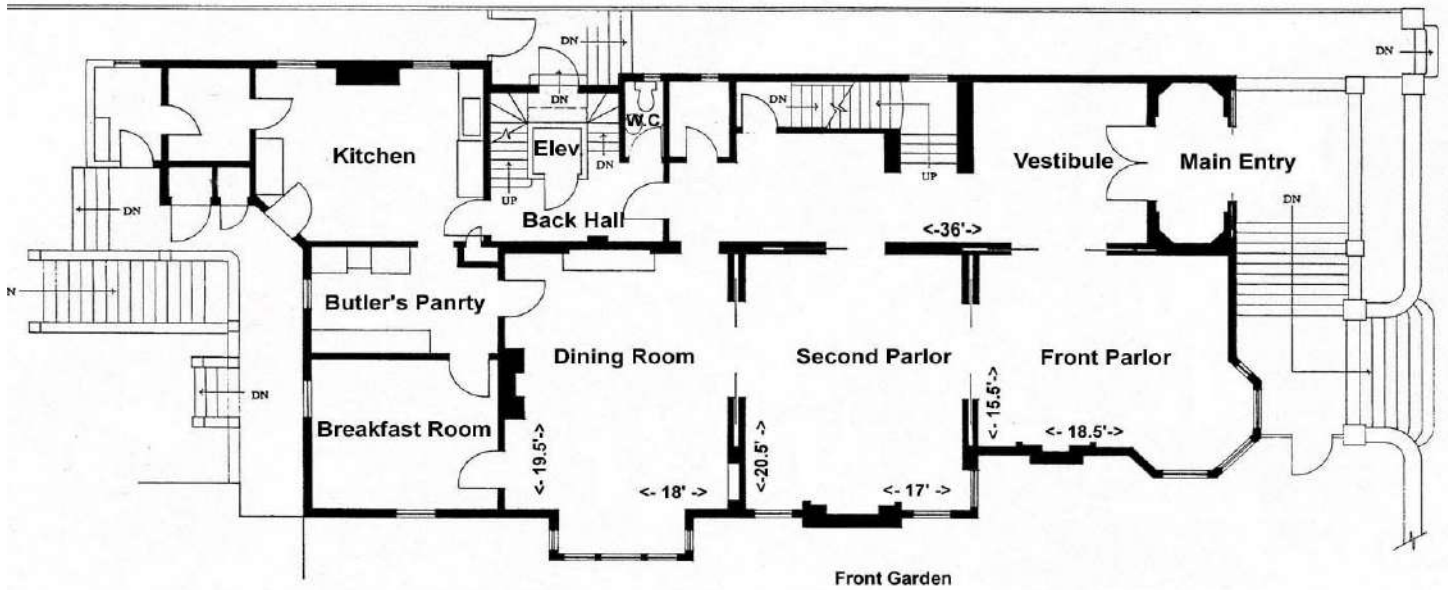
<p>PUBLIC PARKING: Call Ahmet for group rates and valet services. 415 409-3800</p> <p>Express Parking - 415 359-0399 1650 Jackson St. between Van Ness and Polk</p> <p>Express Parking - 415 359-0399 1965 Polk St. between Jackson and Pacific</p> <p>Express Parking - 415 674-1799 1776 Sacramento St. between Van Ness and Polk</p> <p>Old First Garage - 415 409-3800 1751 Sacramento St. between Van Ness and Polk</p>	<p>VALET PARKING: California Parking - 415 447-1700</p> <p>Soiree Valet - 415 284-9700 www.soireevalet.com</p>	<p>SHUTTLE SERVICES: Bauer Transportation - 1-877 959-0988</p>
--	--	--

Driving Directions:

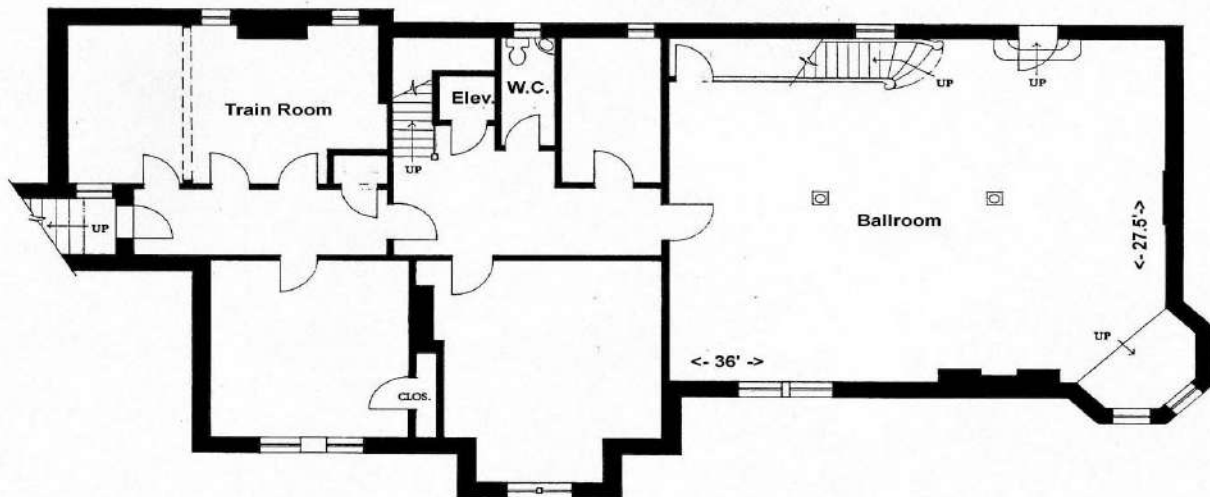
<p>From the South Bay: Take 101 North to 9th Street/Golden Gate Bridge exit. Turn left onto 9th St. Stay in left lanes till you cross Market St. 9th becomes Hayes St. After crossing Van Ness, continue one block to Franklin St; turn right on Franklin St. Follow Franklin St. North, about 10 blocks. House is just past Washington St., on left.</p>	<p>From the East Bay: Take 80 West, across the Bay Bridge. Stay in right lane to 9th Street/Civic Center exit. At bottom of ramp, bear left onto Harrison St. Go 1 block and turn right onto 9th St. Stay in left hand lanes till you cross Market Street, which then becomes Hayes St. After crossing Van Ness, continue one block to Franklin St; turn right on Franklin St. Follow Franklin St. North, about 10 blocks. House is just past Washington St., on left.</p>	<p>From Marin/North Bay: Take 101 South across Golden Gate Bridge to Lombard St. Stay on Lombard to Van Ness Ave. Turn right on Van Ness. Take Van Ness to Clay, (one block past Washington), turn right on Clay. Drive up one block to Franklin, turn right on Franklin. Go 1.5 blocks on Franklin. H-L House is on the left side, in the middle of the block, just past Washington St.</p>
---	--	---

Floor Plans:

FIRST FLOOR – The Front Parlor, Second Parlor, and Dining Room are main event areas. The Kitchen and Butler's Pantry reserved for food preparation and bussing



BALLROOM – The Ballroom can accommodate groups for wedding receptions, formal luncheons/dinners, meetings and entertainment. the max. capacity for a sit down is 90-100.



SECOND FLOOR – NOT PICTURED. The Bedroom, Sitting Room, and Bathroom in front of house can be used by bride and groom as dressing rooms before/after the wedding