

# Rental Guide





The Museum of Vancouver is a unique and important historical venue. Built for Canada's centennial and opened in 1968, the building is **one of Vancouver's architectural gems**, making it a one-of-kind venue to host a myriad of special events, receptions and business meetings.

Situated in **Vanier Park** near **Kitsilano Beach**, just minutes from downtown, the Museum boasts stellar views of English Bay, Stanley Park, and the North Shore mountains.

The Museum's variety of special exhibitions and programs means there's always an inspiring energy within its walls. Our dedicated Rentals department strives to provide you and your guests with exceptional service and a memorable event experience.

## Introduction



# Contents

## Venues

Joyce Walley Room  
History Room and Garden Patio  
MOV Board Room

## Prices

Rental Capacities  
Pricing

## More

Catering



## Venues

The Museum of Vancouver has three major rental spaces, including **Joyce Walley Room**, **History Room and Garden Patio**, and the **MOV Boardroom**.

### Joyce Walley Room

Our multipurpose space. The space features 13-foot floor-to-ceiling windows making it an ideal location for various events.

### History Room and Garden Patio

The History Room and adjacent Garden Patio feature unobstructed views of Vanier Park, English Bay, the West End, Stanley Park and the North Shore mountains.

### MOV Boardroom

The Museum of Vancouver's Boardroom is located on the lower floor and is a private meeting space for small meetings, training seminars or lectures.



## Joyce Walley Room

The Joyce Walley Room is our **multipurpose space**. The space features **13-foot floor-to-ceiling windows** making it an ideal location for receptions, meetings, workshops and family events. It has unparalleled views that look out over Vanier Park, English Bay, the West End, Stanley Park and the North Shore mountains through a panoramic wall of glass.

### Room Capacity

Standing Cocktail Reception	120
Wedding Ceremony	120
Theatre/Lecture Style	120
Seated Dining	90

### Ideal for

Wedding ceremonies and receptions, corporate social events, meetings, conferences, trainings, social events, reunions, anniversaries, openings, youth events and camps.

**Minimum Rental**    \$ 1,210 (4 hours)





### Included Amenities

Event liaison, security, building services staff, event storage space, site visits, signage and photo opportunities.

### A/V & Furniture

Podium with built in microphone plus one additional audio channel, WiFi, large projection screen, six-foot rectangular banquet tables, and black contemporary stacking chairs.

## Joyce Walley Room

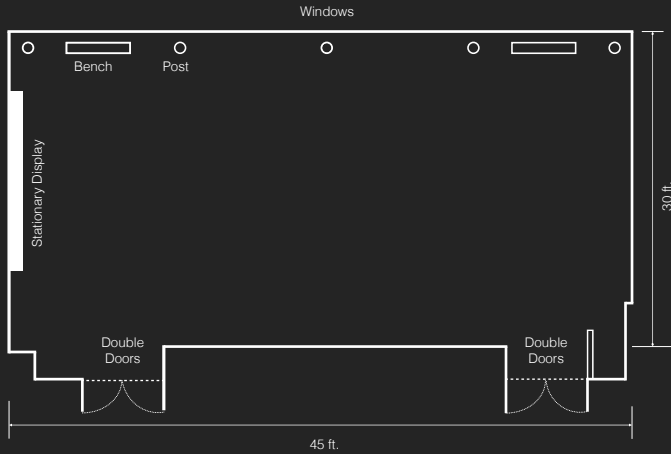


*Vanier Park, English Bay, and the North Shore mountains  
through a panoramic wall of glass*

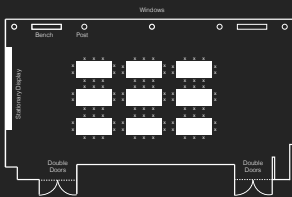


Floor Plan

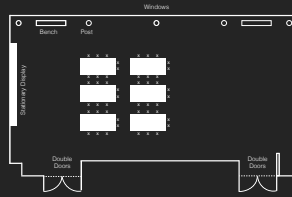
# Joyce Walley Room



Example A: 90 seats



Example B: 50 seats





## History Room and Garden Patio

The History Room and adjacent Garden Patio feature unobstructed views of Vanier Park, English Bay, the West End, Stanley Park and the North Shore mountains. The venue is located on the lower level of the Museum and the Patio itself is surrounded by our Native Plant Garden. Its location is only steps away from the duck ponds, bike paths and overlooks the open green space of Vanier Park. The History Room and Garden Patio are **ideal for events looking to incorporate both indoor and outdoor space**. It also features dual door access to the Patio, which are perfect for wedding ceremonies and special entrances.

### Room Capacity

Standing Cocktail Reception	100
Wedding Ceremony	50 seated or 100 seated and standing
Theatre/Lecture Style	60

★ Capacities are for the combined use of the indoor and outdoor spaces. Please contact rentals coordinator for reduce capacities of events only occurring indoors.

**Minimum Rental**    \$ 715 (4 hours)

*City Scape, English Bay, Northshore Mountains*

*Open Green Space and Bike Path*

*Sample patio setup*



### **Ideal for**

Wedding ceremonies and receptions, BBQs, corporate socials or special events, team building, meetings, conferences, trainings, reunions and anniversaries, openings, youth events or camps.

### **Included amenities**

Museum Event Liaison, security, building services staff, event storage space, site visits, signage opportunities, and EasyPark discount group coupons.

### **A/V & Furniture (indoor only)**

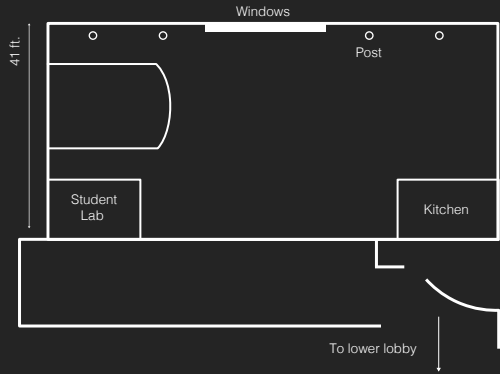
WiFi, six-foot rectangular banquet tables and an assortment of comfortable chairs.

## **History Room and Garden Patio**



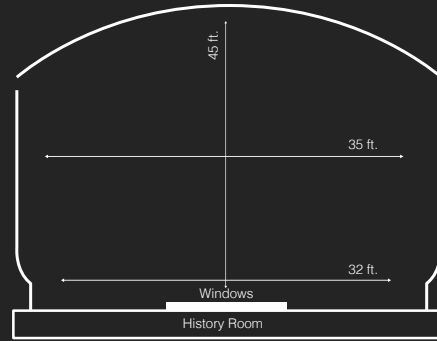
Floor Plan

# History Room



Floor Plan

# Garden Patio



## MOV Boardroom



The Museum of Vancouver's Boardroom is located on the lower floor and is a private meeting space for **small meetings, training seminars or lectures**. A feasible option for companies in need of a meeting space, as well as a perfect off-site venue for your monthly training/management meetings. Ideal for small meetings, seminars or training sessions.

## MOV Boardroom



**Room Capacity** Boardroom meeting style (14 people)

**Minimum Rental** \$150 (2 hours – daytime)  
\$300 (4 hours – evening)

**Included** Security, Museum Event Liaison, site visits, signage opportunities, WiFi, and a white board. (Projector available for rent - \$100)

## Capacities

Capacities are suggested estimates, as they may vary depending on your event setup. From standing reception, theatre style, class room style to seated dining and ceremonies, MOV's three main spaces could be your ideal choice for different events and ceremonies.





## Capacity Chart

	Standing Reception	Theatre Style	Classroom Style	Seated Wedding Ceremony	Seated Dining
<b>Joyce Walley Room</b>	120	140	100	120	90
<b>History Room &amp; Garden Patio</b>	120	100	100	100	80
<b>History Room</b>	60	50	40	40	40
<b>Garden Patio</b>	60	50	50	50	40
<b>MOV Boardroom</b>	N/A	N/A	18	N/A	N/A



## Pricing

Prices listed in the chart include event setup and strike time to calculate your total event pricing. All prices subject to GST.

### Discounts

MOV Members	10% off
Non-Profit Groups	30% off (Monday – Thursday)

### Insurance

**Insurance is required** for all venue rentals at the Museum. You have the option to purchase insurance through the Museum or through an alternative provider. Proof of insurance will need to be submitted to our Rentals Department **30 days prior to your event.**

Liability Insurance	\$6 - \$60 (ranges on nature of event)
Host Liquor Liability Insurance	\$100 (if applicable)



## Price Chart

**Planning an event longer than 8 hours?**

Please contact our rentals team directly for pricing and options at [rentals@museumofvancouver.ca](mailto:rentals@museumofvancouver.ca)

	4 hrs	5 hrs	6 hrs	7 hrs	8 hrs
<b>Joyce Walley Room</b> (minimum 4 hrs)	\$1,490	\$1,630	\$1,750	\$1,850	\$1,925
<b>History Room &amp; Garden Patio</b> (minimum 4 hrs)	\$930	\$1,020	\$1,100	\$1,200	\$1,320
<b>MOV Boardroom</b> (minimum 2 hrs)	\$80 / hr (up to 4 hrs)	\$420	\$480	\$540	\$600



## Pricing

Additional fees, if applicable:

<b>SOCAN Music</b> (without dancing)	\$31.72
<b>Re:sound</b> (without dancing)	\$13.30
<b>SOCAN Music</b> (with dancing)	\$63.49
<b>Re:sound</b> (with dancing)	\$26.63
<b>MOV Staff hourly fee</b> (required for event with 200 people and more)	\$35 per hour per staff



by Shauna Danielle Photography



## Pricing

Optional services, if applicable:

<b>Projector</b> (one on-site)	\$200
<b>Self-Guided Tour</b> (with rental)	Request for details
<b>Curated Talk &amp; Tour</b> (minimum 10 people at a time)	Request for details
<b>Ventriloquist for families</b> (subject to availability)	Request for details
<b>Scavenger Hunt</b> (Adults only)	Request for details



## Catering

### Peake of Catering

An industry-leading, full service catering company. It offers catering and event management for events from intimate to extravagant. Peake's goal is to elevate clients' dining and event experience by offering our knowledge and skills to exceed expectations. Peake of Catering brings culinary and event solutions to a wide variety of dining requests through thoughtful planning, precision execution and delicious moments.

#### Contact

Phone: 604.872.8431

Email: [info@peakeofcatering.com](mailto:info@peakeofcatering.com)

Website: [www.peakeofcatering.com](http://www.peakeofcatering.com)

### Edge

Vancouver's premiere catering company, led by female food entrepreneur Judy Reeves. The coveted caterer is renowned for its elevated, locally sourced, custom cuisine and flawless, detailed event management.

#### Contact

Phone: 604.876.7226



---

*Catered by Peake of Catering*





# Contact

**MOV Venue Rentals Department**  
P: 604-730-5320  
E: [rentals@museumofvancouver.ca](mailto:rentals@museumofvancouver.ca)

**Find us online**



[@museumofvan](#)  
[museumofvancouver.ca](http://museumofvancouver.ca)



*by Shauna Danielle Photography*