

# Tin Poppy Wedding Packages





A scenic view of a mountain valley. In the foreground, a wedding party of three people (a bride in a white dress, a groom in a dark suit, and a bridesmaid in a blue dress) stands on a small stone platform. The background features a lush green valley with a river, surrounded by dense evergreen forests and rolling mountains under a blue sky with light clouds. The scene is framed by large green leaves in the top corners.

## ABOUT

Tin Poppy is a privately owned solar powered nature retreat located in the Larch Hills 25 minutes from Salmon Arm BC. The 160 acre pet friendly property has four unique cabins, an event hall, and kilometers of maintained walking trails.

We offer 2 packages at our retreat, a semi curated elopement/mini wedding package, and a fully curated popup package





# Lavender Elopement & Micro Wedding

(Semi Curated)

Our Elopement package can accommodate up to 25 guests staying onsite (4 cabins).

The elopement package includes 2 nights' accommodation for the couple and their guests, Marriage Commissioner, 70 min of professional photography, bouquets and or boutonnières for the couple, and an elopement or wedding cake. All tables, chairs, crockery, linens and decor are included in the package.

We take care of all the booking deposits, organizing, ordering and if you'd like, the decor styling of the ceremony wreath and reception table.

You're welcome to bring and prepare your reception meal in Lavender Cabin's large country kitchen, or we can provide you with catering contact information.

Show up with your closest friends and family for a 2 night laid back eco friendly celebration.

- 2 Nights 'accommodation for the couple + 23 guests
- Lavender Cabin reception space, tables chairs and dinnerware for up to 25 guests
- B.C. Marriage Commissioner & witnesses if needed
- Professional photography (*a 70 minute location photography session in and around the property*)
- Bridal Bouquets and or groom's boutonnières
- Elopement /wedding cake (*chocolate vanilla or carrot*)
- 160 private acres of gorgeous scenery for your backdrop, no helicopter needed
- Ceremony site & seating
- Blue tooth sound system with mic

Extra guests can be accommodated at \$150 per extra guest up to 23.

2 -10 guests - Lavender Cabin

12 -15 guests - Lavender Cabin & Violet Cabin

15 -19 guests - Lavender, Violet & Wild Rose Cabins

19 - 23 guests - Lavender, Violet, Wild Rose & Poppy Cabins

**Lavender Elopement.....\$3800  
(couple)**

**Micro Wedding.....\$7250  
(couple + 23 guests)**

# Lavender Elopement & Micro Wedding FAQ's

## Do you take individual payments from our guests?

No, as our venue includes all accommodation, we don't take individual payments from guests. If you're looking to get your guests to cover some of the accommodation costs, we'd recommend to use the website [www.eventbrite.ca](http://www.eventbrite.ca) for your RSVP & payment method. This is an easy and efficient way of inviting your guests and getting them to contribute to accommodation. We'd recommend for you to offer a set price to all guests as it usually works out to be a similar price for all cabins at \$125 per guest.

## Can we have more than 23 guests?

No, 25 guests onsite is our limit.

## Can we bring our own alcohol, and do we need a special events permit?

Yes, you can bring your own alcohol, No you do not need a Special Events Permit.

## Do we need event insurance?

No, you do not need insurance for this package.

## How do we book?

Both the deposit and the signed contract needed to reserve your date. \$1000 non-refundable deposit is due upon booking, 50% is due 6 months prior and full balance is due 30 days prior to your event.

### Cancellation Policy

Cancellations made within 6 months to 90 calendar days prior to event agree to forfeit 60% of deposits made to date.

## Do you provide catering?

No but we provide you with local catering contact info, and of course you're welcome bring and prepare your own meals. All of our accommodations are equipped with fridge/freezer, oven/stovetop and BBQs.

## Who is included in the package?

Any person who occupies a seat is included in the guest count including the couple and children. Infants are not included.

use



# Lavender Cabin Reception Seats up to 25



# Emerald Hall Popup Package

(Fully Curated)

The Emerald Hall Popup is a fully curated package, best suited to busy adventurous couples that share our eclectic aesthetic and are interested in lowering their ecological footprint.

This package has all of the elements of a tradition wedding, professional photography, seasonal blooms, cake, and reception dinner etc, wrapped up in one beautiful eco-friendly package.

We are committed to sustainability and use wild greenery and seasonal flowers from local farms. Seasonal flowers means whatever is currently blooming in the fields...

You can choose a bright and bold, or pastels for your floral mood inspiration.

We do our best to accommodate your general aesthetic.

- 3 Nights' accommodation for the couple + 23 guests
- Full planning & day of coordination
- Emerald Hall reception space includes wood tables & white chiavari chairs, dishware & cutlery bar with basic supplies, blue tooth sound system with mic and 15x 20 dance floor with disco ball.
- B.C. marriage commissioner
- Professional Photography (a 70 minute location photography session in and around the property and receive an edited online gallery of 30+ selects)
- 160 private acres of gorgeous scenery for your backdrop, no helicopter needed
- Grazing table ~ crackers, meats, cheeses, local fruits and vegetables
- Reception dinner
- Wedding Cake ~ chocolate, vanilla or carrot
- Decor ~ bouquet sand or boutonnieres for the couple, decorated reception hall & ceremony site
- Fire pit ~ wood can be purchased
- Onsite designer outhouses at Emerald Hall ~ not porta potties
- Full set up and post event clean up

**Emerald Popup.....\$14,950**  
**(couple + 23 guests)**

# Emerald Popup Package FAQ's

## **Can we customize this package?**

Yes a little...you can choose a bright and bold, or a pastels for your floral mood inspiration, and there are 3 reception dinner choices.

## **Can we have more than 23 guests?**

No , 25 guests onsite is our limit .

## **Do you take individual payments from our guests?**

No, as our venue includes all accommodation, we don't take individual payments from guests. If you're looking to get your guests to cover some of the accommodation costs, we'd recommend to use the website [www.eventbrite.ca](http://www.eventbrite.ca) for your RSVP & payment method. This is an easy and efficient way of inviting your guests and getting them to contribute to accommodation. We'd recommend for you to offer a set price to all guests as it usually works out to be a similar price for all cabins at \$175 per guest.

## **Can we bring our own alcohol?**

Yes, you can bring your own alcohol; you will need to acquire a Special Events Permit.

## **Do we need Third Party Liability Insurance?**

Yes, you are responsible for obtaining a Special Events Liability Insurance.

## **How do we book?**

Both the deposit and the signed contract needed to reserve your date. \$1500 non-refundable deposit is due upon booking, 50% is due 6 months prior and full balance is due 60 days prior to your event.

## **Cancellation Policy**

Cancellations made within 6 months to 90 calendar days prior to event agree to forfeit 60% of deposits made to date.

## **How late can we party until?**

11:00pm music is turned off and 11:15 clean up at Emerald Hall

## **Who is included in the package?**

Any person who occupies a seat is included in the guest count including the couple and children. Infants are not included.

use.



WE ARE OFFERING 15% OFF EMERALD HALL POPUP  
2021 BOOKING PRICE \$12707.50



# New Emerald Hall Popup Menu Coming Soon!

We are working on a new menu for our 2022 Season. We are passionate about food quality, sustainability, taste and nutrition.





# Emerald Hall



## Site Protocol

- Check in time 3pm check out time 10am.
- 11 pm Music turned off at Emerald Hall, 11:15 Emerald Hall power shut off.
- Children and pets need to be supervised at all times.
- Candles must be in an enclosed glass container, no open flame or tapered candles.
- No firearms, fireworks or open flame permitted on the property.
- No confetti of any kind (paper, glitter, rice) flower petals & bubbles are permitted.
- Do not harvest flowers or greenery from our venue.








# Tin Poppy Retreat



  
Tin Poppy



# Lavender Cabin











## Lavender Cabin

*Lavender Cabin's power is generated by the sun. The Lavender has all the amenities that you'd find at home, electricity, hot running water, and complimentary wifi.*

*The cabin also has spectacular views of the North Okanagan/Shuswap valley and is pet friendly.*

Sleeps 10 guests

Complimentary wifi

King bed (upstairs master bedroom)

Two double beds in guest room (sleeps 4)

Two double futons (in living room, sleeps 4)

Fully equipped large country kitchen

Dishware & cutlery

Two full bathrooms

Wood fired sauna

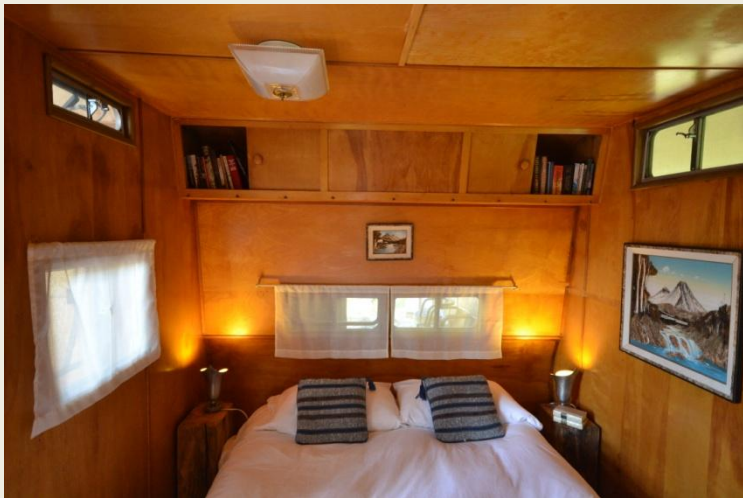
Linens and towels

Wood fireplace

A modern, two-story cabin with a light blue roof and a yellowish-tan upper wall. The lower portion of the cabin is constructed from a repurposed silver metal trailer, featuring a red awning and a window with a red poppy mural. The cabin is set on a rocky, gravelly base with a wooden deck and steps leading to a central door. The background shows a dense forest of evergreen trees under a blue sky with scattered white clouds.

Tin Poppy Cabin







## Tin Poppy Cabin

*Tin Poppy is a solar powered modern/retro screened-in post and beam structure built around a 32 foot 1953 Caravan.*

Sleeps 6 guests

Complimentary wifi

Master bedroom with queen bed

Queen fold out dinette

Double futon (in screened in porch)

Kitchen with apartment sized oven/stove top and fridge/freezer

Dishware & cutlery

Private bathroom with separate stand alone shower

Linens and towels

Gas fireplace in the cabin





Violet Cabin









## Violet Cabin

*This beautiful little cabin in the woods is equipped with modern propane appliances, comfortable beds, cozy fireplace and a private sauna. This cabin does not have electricity or running water. Clean water is provided.*

Sleeps 5 guests

King bed (in upstairs loft)

Twin bed (in upstairs loft)

Double futon (in living room)

Kitchen with apartment sized oven/stove top, under counter small fridge/freezer

Dishware & cutlery

Clean water in 5 gallon jugs

Wood fired sauna

Private outhouse

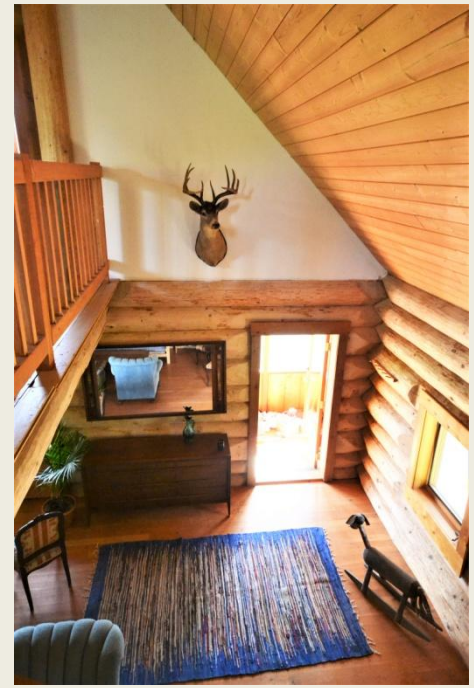
Linens and towels



# Wild Rose Cabin











## Wild Rose Cabin

*This beautiful little cabin in the woods is equipped with modern propane appliances, comfortable beds, cozy fireplace and a private sauna. This cabin does not have electricity or running water. Clean water is provided.*

Sleeps 4 guests

King bed (in upstairs loft)

Double futon (in living room)

Kitchen with apartment sized oven/stove top, under counter small fridge/freezer

Dishware & cutlery

Clean water in 5 gallon jugs

Wood fired sauna

Private outhouse

Linens and towels





## Contact

[tinpoppybc@gmail.com](mailto:tinpoppybc@gmail.com)

[shelly.tinpoppyweddings@gmail.com](mailto:shelly.tinpoppyweddings@gmail.com)