



MEMORIES ARE MADE HERE

AT A GLANCE

- Group room block at a discounted rate with breakfast included
- Complimentary Executive Suite (based on availability) for Bride and Groom on the night of the reception with champagne and strawberries
- Event staff will set out your centerpieces and place cards
- Complimentary wedding cake cutting
- Custom room layout design
- Private breakfast seating or gift opening room (based on availability)

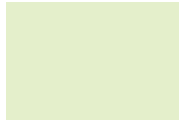
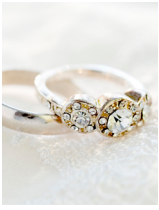
Your wedding is one of the most meaningful times of your life.

DoubleTree by Hilton takes the guesswork out of your preparation by providing the perfect backdrop and expertise for an experience you'll never forget. Our rooms cater to all needs and our experienced team is ready to help with your plans and be with you every step of the way. In addition to hosting your out-of-town guests, DoubleTree offers inviting settings for all the events surrounding your nuptials, including the ceremony, reception, bridal shower and rehearsal dinner.

DoubleTree by Hilton - Bloomington

10 Brickyard Drive
Bloomington, IL 61701
Tel (309) 664 6446
E-Mail: diana.vincent2@hilton.com
Web: bloomington.doubletree.com





TWO IS BETTER THAN ONE

Our thoughtful, experienced coordinators will take care of and anticipate every detail of your event. We're here to make this memorable time stress-free, enjoyable and extraordinary.

YOU TAKE CARE OF THE "I DO'S". WE'LL TAKE CARE OF THE REST.

GUEST ROOMS

DoubleTree by Hilton - Bloomington has a variety of guest rooms that meet every need, from single business travelers to full families. Standard king rooms, rooms with two queen beds, three types of suites and accessible rooms are all available.

Relax in contemporary accommodations with modern, stylish guest rooms that include all the essentials; and we offer an array of amenities to make you feel at home. You'll also enjoy the following accommodations in each of our rooms.

- 197 newly renovated, well appointed guest rooms, including 12 suites
- Sweet Dreams® by DoubleTree sleep experience
- Wireless high-speed internet access (charges may apply)
- Remote guest printing
- 50" flat screen TVs with Premium channels
- In-room coffee from The Coffee Bean & Tea Leaf
- Telephones and Voicemail
- Hair dryer, iron, ironing board, mini-fridges and safes

WE'LL MAKE SURE YOUR WEDDING DAY IS YOUR PERFECT DAY

DoubleTree by Hilton - Bloomington is an impressive venue for prestigious corporate events or grand banquets. Our rooms cater to all needs and our experienced team is ready to help with your plans and be with you every step of the way.

- Experienced Event Team
- Dedicated Catering Manager
- Award Winning Chef
- Full service catering and convention services
- 18,000 square feet of newly renovated flexible meeting and event space for up to 800 guests.
- Wi-Fi in all meeting rooms
- Business Center
- In-house audio/visual support including video conferencing

EAT, DRINK & BE MARRIED

LOBBY BAR

The Brickyard Bar is open daily from 4:00PM - 11:00PM.

WAKE UP DOUBLETREE BREAKFAST

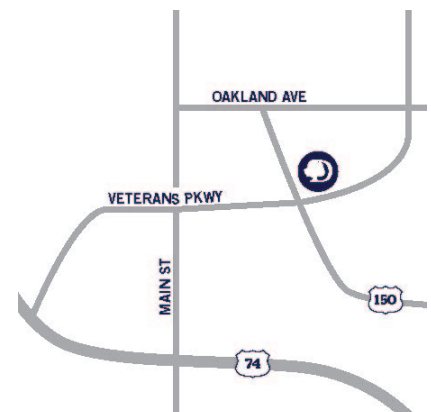
Start your day on a bright note by enjoying our signature Wake Up Doubletree Breakfast™.

Located on the ground floor, breakfast is served Monday - Friday from 6:00AM to 10:00AM and from 7:00AM - 11:00AM on Saturday and Sunday.

IN-ROOM DINING

Available daily from 6:00AM to 11:00PM

LOCATION





TWO IS BETTER THAN ONE

Allow DoubleTree by Hilton's Wedding and Special Events Manager to show you why our full-service hotel is ideal for planning a wedding that is luxurious, simplistic or totally unique.

WEDDING PACKAGES

"I DO..."

Package Includes:

- Complimentary king room for bride and groom with champagne and strawberries
 - Your choice of ivory or white linens and napkins
- Butlered Veggie Shooters and Shrimp Cocktail Shots
 - Champagne toast for all wedding guests
 - Exquisitely prepared gourmet dinner
 - A premium cash bar

"HAPPILY EVER AFTER..."

Package Includes:

- Complimentary king room for bride and groom with champagne and strawberries
 - Your choice of ivory or white linens and napkins
 - One hour of open bar during cocktail hour
- Butlered Veggie Shooters and Shrimp Cocktail Shots and your choice of (1) butlered "Mini's and Bites"
 - Champagne toast for all wedding guests
- Choice of chair covers and sashes (multiple colors available)
 - Exquisitely prepared gourmet dinner
 - A premium cash bar after dinner

Mini's and Bites (Select 1 Option):

- Signature Mini – Choose your color of signature Martini and our servers will butler passed 3oz. portions with a selection of assorted canapés.
- Classic Mini – Classic 3oz. mini Martinis butler passed and paired with Prosciutto wrapped asparagus.
- Margarita Mini – Classic 3oz. mini Margaritas butler passed and paired with southwest eggrolls.

"FOREVER AND EVERMORE"

Package Includes:

- Complimentary king room for bride and groom with champagne and strawberries
 - Your choice of ivory or white linens and napkins
 - One hour of open bar during cocktail hour
- Butlered Veggie Shooters and Shrimp Cocktail Shots and your choice of (2) butlered "Mini's and Bites"
 - Champagne toast for all wedding guests
- Choice of chair covers and sashes (multiple colors available)
 - Exquisitely prepared gourmet dinner
 - Three additional hours of open bar after dinner

Mini's and Bites (Select 2 Options):

- Signature Mini – Choose your color of signature Martini and our servers will butler passed 3oz. portions with a selection of assorted canapés.
- Classic Mini – Classic 3oz. mini Martinis butler passed and paired with Prosciutto wrapped asparagus.
- Margarita Mini – Classic 3oz. mini Margaritas butler passed and paired with southwest eggrolls.



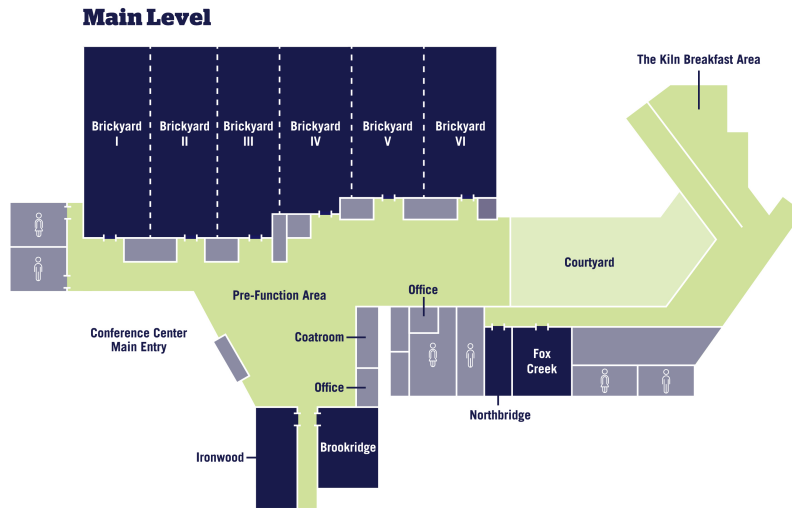
**DOUBLETREE BY HILTON
BLOOMINGTON**

10 Brickyard Drive
Bloomington, IL 6170
Tel (309) 664 6446
E-Mail: diana.vincent2@hilton.com
Web: bloomington.doubletree.com

FLOOR PLAN

Floor Map Key

- Elevators
- Meeting/Conference Rooms
- Amenities/Service Areas
- Public Space
- Outdoor Space



CAPACITY CHART

NAME	AREA (Sq. Ft.)	SIZE (L x W x H)	CLASSROOM	THEATER	BANQUET	RECEPTION	CONFERENCE	U-SHAPE	H-SQUARE
MAIN LEVEL									
Combined Brickyard I – VI	10,824	193' x 63'	N/A	1,086	630	N/A	N/A	N/A	280
Brickyard I – III	5,824	63' x 93' x 16'	310	536	400	250	120	100	120
Brickyard I	2,079	33' x 63' x 16'	100	175	120	70	50	45	50
Brickyard II	1,890	30' x 63' x 16'	95	170	120	60	50	45	50
Brickyard III	1,890	30' x 63' x 16'	95	170	120	70	50	45	50
Brickyard IV – VI	5,000	50' x 100' x 13'	240	500	400	250	120	100	120
Brickyard IV	1,650	33' x 50' x 13'	80	200	90	50	40	40	40
Brickyard V	1,700	34' x 50' x 13'	80	130	90	50	40	40	40
Brickyard VI	1,650	33' x 50' x 13'	80	130	90	60	40	40	40
Brookridge	812	28' x 29' x 8'	40	60	50	30	25	25	25
Fox Creek	546	21' x 26' x 8'	25	40	30	20	20	15	15
Ironwood	684	19' x 36' x 8'	30	50	30	20	20	20	20
Northbridge	234	13' x 18' x 8'	N/A	N/A	N/A	N/A	12	N/A	N/A