



Country Heritage Park

2021 Wedding Package





Welcome

TO THE HIDDEN GEM IN MILTON ONTARIO SINCE 1973. SITUATED ON 80 BREATHTAKING ACRES CREATING THE PERFECT BACKDROP WITH ITS UNIQUE PHOTOGRAPHIC LANDSCAPES INCLUDING THE NIAGARA ESCARPMENT, CENTURIES OF HISTORIC BARNs, HOUSES AND BUILDINGS ALL IN ONE LOCATION.

FEATURED ARE OUR TWO UNIQUE RECEPTION VENUES THAT OFFER COMPLETELY DIFFERENT ELEMENTS AND ATMOSPHERES TO ANY WEDDING.

THE GAMBREL BARN

ALTHOUGH IT IS A TRADITIONAL LOOKING BARN FROM THE OUTSIDE, ONCE INSIDE THIS POST AND BEAM STRUCTURE SURROUNDS YOU WITH THE WARMTH OF ITS RECLAIMED WOOD, SIMPLE ELEGANCE AND ITS OVERWHELMING NATURAL BEAUTY. CAREFULLY LIT HISTORIC BEAMS AND STRUNG TWINKLE LIGHTS CREATE THE PERFECT ATMOSPHERE FOR ANY EVENT. THIS HISTORIC BARN'S UNIQUE NAME REFLECTS THE ROOF STYLE AND WAS CONSTRUCTED AS A BICENTENNIAL PROJECT BACK IN 1984.

THE CARRIAGE HOUSE

A ONE OF A KIND BUILDING WHERE CLASSIC MEETS ELEGANCE. AN ALL WOOD BUILDING CONSTRUCTED WITH LARGE BARN DOORS, OFFERING A PERFECT GRAND ENTRANCE INTO ITS UNIQUE OPEN ROOF CONCEPT ALLOWING THE ELEMENTS OF NATURE TO BE FELT THROUGHOUT THE EVENT. ONCE THE SUN SETS AND NIGHTTIME BEGINS THE BUILDING IS ILLUMINATED BY THE COUNTRY'S NIGHTTIME SKY AND STRUNG TWINKLE LIGHTS ENHANCING NATURE'S NATURAL BEAUTY.

OUR GOAL

TO CREATE LONG LASTING MEMORIES IN AN UNPARALLELED ATMOSPHERE FOR YOU AND YOUR GUESTS THROUGH COMMUNICATION WITH OUR EVENT COORDINATORS AND PARTNERED CATERERS.



General Information

PEAK RATES

MAY - DECEMBER | FRIDAY & SATURDAY
STATUTORY & CIVIC HOLIDAYS

OFF-PEAK RATES

JANUARY - APRIL | SUNDAY - SATURDAY
MAY - DECEMBER | SUNDAY - THURSDAY

ALL RATES ARE HST EXEMPT

SAVE THE DATE

RESERVATIONS ARE ACCEPTED ON A FIRST-COME, FIRST-SERVE BASIS. UPON CONTRACT, A DATE WILL BE HELD FOR ONE WEEK AT WHICH TIME THE CONTRACT MUST BE RETURNED SIGNED WITH A 50% DEPOSIT.

VENUE ACCESS

COUPLES, EXTERNAL VENDORS AND GUESTS WILL HAVE ACCESS TO THE BOOKED CEREMONY AND OR VENUE AS OF 9:00 A.M. ON THE DAY OF THE BOOKING UP UNTIL 2:00 A.M.

COORDINATION SERVICES

COUPLES WILL HAVE A DESIGNATED COUNTRY HERITAGE PARK VENUE COORDINATOR TO ASSIST WITH:

- ALL PLANNING NECESSITIES PERTAINING TO THE VENUE ITSELF
- A WEDDING OUTLINE AND FLOOR PLAN FOR BOTH YOUR CEREMONY AND VENUE LOCATIONS
- CATERING TIMELINES AND EVENT DETAILS
- PRESENCE BRIEFLY DAY OF TO ENSURE YOU ARE HAPPY AND EVERYTHING IS SET AS ACCORDINGLY

ALTHOUGH WE PROVIDE A VENUE COORDINATOR WE STRONGLY ADVISE OUR CLIENTS LOOK INTO A WEDDING COORDINATOR TO ASSIST WITH 'DAY OF' WEDDING CO-ORDINATIONS AND TIMELINES

CATERING

COUNTRY HERITAGE PARK IS PLEASED TO PROVIDE HIGHLY SELECTED PREFERRED CATERERS TO CHOSE FROM THAT OFFER A VARIETY OF DIFFERENT PRICE POINTS AND FOOD SELECTIONS FROM TRADITIONAL WESTERN FOODS TO SOUTH ASIAN CUISINE.

WE REQUIRE OUR CLIENTS TO BOOK WITH ONE OF OUR PREFERRED CATERERS.

EXTERNAL VENDORS

ASIDE FROM THE CATERER, WE OFFER THE FLEXIBILITY TO BRING IN EXTERNAL VENDORS PERTAINING TO OTHER EVENT NECESSITIES SUCH AS, DECOR, FLORAL, AUDIO/VISUAL, PHOTOGRAPHY/VIDEOGRAPHY, ENTERTAINMENT, ETC.

PARKING

AMPLE FREE PARKING AVAILABLE. IF WE HAVE TWO EVENTS BOOKED A SEPARATE LOT WILL BE DESIGNATED TO EACH LOCATION. VEHICLES ARE PERMITTED TO REMAIN OVERNIGHT HOWEVER WILL NEED TO BE PICKED UP THE FOLLOWING DAY BETWEEN 9:00 A.M - 12:00 P.M



F.A.Q' S

ADDITIONAL FEES PAID TO COUNTRY HERITAGE PARK
BESIDES YOUR CEREMONY AND/OR RECEPTION RENTAL
THE FOLLOWING ARE ADDITIONAL FEES:

- BAR PACKAGE SELECTION
- SOCAN TARIFF MUSIC LICENSE FEE | VISIT WWW.SOCAN.CA
- TRACTOR WAGON RIDE | FEE: \$175/HR | \$350/ 3HR (OPTIONAL)

REHEARSALS

WEDDING REHEARSALS CAN BE ARRANGED DAY OF EVENT DURING THE CONTRACTED VENUE ACCESS TIME AND NOT PRIOR TO EVENT DATE.

BRIDAL SUITE

THE HISTORIC PUSLINCH TOWN HALL IS A PERFECT BRIDAL SUITE AND IS CONVENIENTLY LOCATED NEXT TO THE GAMBREL BARN. BUILT IN 1867, THIS BUILDING OFFERS PLENTY OF NATURAL LIGHT FOR GETTING READY PHOTOS, AMPLE SPACE FOR HAIR AND MAKEUP STATIONS, AS WELL AS A SMALL KITCHENETTE AND WASHROOMS.

RENTAL FEE: \$125/HR (MINIMUM 2 HR RENTAL)

CAPACITY: 60 PEOPLE

PHOTOGRAPHY / DRONES

- DAY OF, CLIENTS HAVE ACCESS TO THE PICTURE PERFECT 80 ACRES AND EXTERIOR OF ALL HISTORIC BUILDINGS. UNLESS OTHERWISE RESTRICTED DUE TO A SECONDARY EVENT, IN WHICH CASE THE CLIENT WILL HAVE FULL KNOWLEDGE OF THE RESTRICTIONS IN ADVANCE.
- PHOTOGRAPHY PRIOR TO EVENT DATE CAN BE ARRANGED ON AN APPOINTMENT BASIS. FEE: \$200/HR
- NONE OF OUR HISTORIC BUILDINGS WILL BE OPEN FOR INDOOR PHOTOGRAPHY.
- DRONES ARE NOT ALLOWED TO BE FLOWN ANYWHERE ON OUR PROPERTY AS WE ARE CONSIDERED TO BE IN A FLIGHT PATH FOR TORONTO PEARSON INTERNATIONAL AIRPORT. FINES WILL BE ISSUED.

DECORATION RESTRICTIONS

- OPEN FLAMES SUCH AS CANDLES AND FIRES ARE NOT PERMITTED AT ANY TIME IN ANY OF THE BUILDINGS OR ANYWHERE ON THE PROPERTY.
- ANY AND ALL FASTENERS SUCH AS NAILS, STAPLES, SCREWS, TAPE, GLUE, OR ANY OTHER MATERIAL THAT COULD DAMAGE THE FACILITY INCLUDING BUT NOT LIMITED TO THE FLOOR, WALLS, CEILING AND FIXTURES ARE NOT PERMITTED.
- CONFETTI / RICE / FLOWER PEDALS / STRAW / HAY ARE NOT PERMITTED AT ANY TIME ANYWHERE ON THE PROPERTY.



F.A.Q' S Continued

AUDIO-VISUAL / WI-FI

THE RENTAL OF THE VENUE DOES NOT INCLUDE AUDIO-VISUAL EQUIPMENT OR SERVICES. CLIENTS MAY BRING IN AND OPERATE THEIR OWN EQUIPMENT OR EMPLOY A PROFESSIONAL. SINCE WE ARE A RURAL PROPERTY, WE HAVE LIMITED WI-FI CAPABILITIES AND SUGGEST FOR ALL PRESENTATIONS TO BE DOWNLOADED IN ADVANCE AND UPLOADED TO A USB OR SECONDARY DEVICE.

SMOKING/VAPING

SMOKING AND/OR VAPING IS NOT PERMITTED THROUGHOUT THE PROPERTY TO COMPLY WITH PROVINCIAL REGULATIONS, WITH THE EXCEPTION OF DESIGNATED SMOKING AREAS.

ANIMALS

EXCEPT FOR SERVICE DOGS, ANIMALS ARE NOT PERMITTED IN OUR RECEPTION LOCATIONS. CONSIDERATION MAY BE MADE FOR CEREMONY PURPOSES ONLY.

LIABILITY

COUNTRY HERITAGE PARK HOLDS APPROPRIATE LIABILITY INSURANCE TO HOST EVENTS ON ITS PROPERTY. HOWEVER, WE STRONGLY RECOMMEND CLIENTS TO PURCHASE THEIR OWN PARTY ALCOHOL LIABILITY (PAL) COVERAGE. VISIT: WWW.PALCANADA.COM

INCLEMENT WEATHER

IN THE EVENT OF INCLEMENT WEATHER, A CONTINGENCY PLAN WILL BE IN PLACE FOR OUR OUTDOOR CEREMONY SITES. THE BOOKING OF THE CARRIAGE HOUSE DOES NOT HAVE A CONTINGENCY PLAN.

CANCELLATION POLICY

CANCELLATION OF THE BOOKING BY THE CLIENT WILL RESULT IN FORFEITURE OF ALL AMOUNTS PAID UP UNTIL THE DAY OF CANCELLATION.

METHODS OF PAYMENT

- VISA
- MASTERCARD
- E-TRANSFER
- PERSONAL CHEQUE



Ceremony Sites

General Store

Rental Fees Include

- HOUSE WHITE CHAIRS
- SETUP & TEARDOWN OF ALL HOUSE ITEMS
- DRIFTWOOD BOARD FENCING AROUND SITE
- HYDRO

Details

- AVAILABLE MAY - SEPTEMBER
- AVAILABLE WITH A GAMBREL BARN RECEPTION ONLY
- CONTINGENCY SITE DUE TO INCLEMENT WEATHER - GAMBREL BARN LOFT
- WHEELCHAIR ACCESSIBLE

Rental Fees

PEAK - \$800

OFF-PEAK - \$500

Capacity

200 SEATED



The Meadow



Rental Fees Include

- HOUSE WHITE CHAIRS
- SETUP & TEAR DOWN OF ALL HOUSE ITEMS
- HYDRO

Details

- AVAILABLE MAY - SEPTEMBER
- AVAILABLE WITH ON-SITE RECEPTION ONLY
- CONTINGENCY SITE DUE TO INCLEMENT WEATHER - THE HARROP BARN
- WHEELCHAIR ACCESSIBLE

Rental Fees

PEAK - \$800

OFF-PEAK - \$500

Capacity

280 SEATED

Ceremony Sites

Gambrel Loft

Rental Fees Include

- HOUSE WHITE CHAIRS
- SETUP & TEAR DOWN OF ALL HOUSE ITEMS
- HYDRO

Details

- AVAILABLE ALL YEAR ROUND
- AVAILABLE WITH A GAMBREL BARN RECEPTION ONLY
- ACCESSIBLE BY STAIRS ONLY

Rental Fees

PEAK - \$800

OFF-PEAK - \$500

Capacity

200 SEATED



Mayne's Corner Church



Rental Fees Include

- HISTORIC CHURCH PEWS
- HYDRO

Details

- AVAILABLE YEAR-ROUND FOR RENTAL
- EXCLUSIVE CEREMONY VENUE
- WHEELCHAIR ACCESSIBLE

Rental Fees

PEAK - \$350

OFF-PEAK - \$350

Capacity

50 SEATED

Reception Venues



Gambrel Barn



Rental Fees Include

- HOUSE BANQUET 60" ROUND TABLES & CHAIRS|
- RECTANGULAR HEAD TABLES
- 21' X 12' STAGE | OPTION OF SECOND TIER
- SETUP & TEAR DOWN OF ALL HOUSE ITEMS
- FOUR WINE BARRELS
- TWO EASELS MADE OF DRIFTWOOD
- ON-SITE WASHROOMS
- DROP DOWN SCREEN AND PROJECTOR
- PREP KITCHEN
- HYDRO
- NATURAL GAS HEATING

Details

- AVAILABLE YEAR-ROUND
- WHEELCHAIR ACCESSIBLE

Rental Fees

PEAK - \$7,000

OFF-PEAK - \$5,500

Capacity

280 SEATED

Carriage House



Rental Fees Include

- HOUSE BANQUET 60" ROUND TABLES & CHAIRS
- RECTANGULAR HEAD TABLE
- SETUP & TEAR DOWN OF ALL HOUSE ITEMS
- FOUR WINE BARRELS
- TWO EASELS MADE OF DRIFTWOOD
- OFF-SITE WASHROOMS
- HYDRO

Details

- AVAILABLE MAY - SEPTEMBER
- WHEELCHAIR ACCESSIBLE
- NO CONTINGENCY LOCATION DUE TO INCLEMENT WEATHER

Rental Fees

PEAK - \$4,500

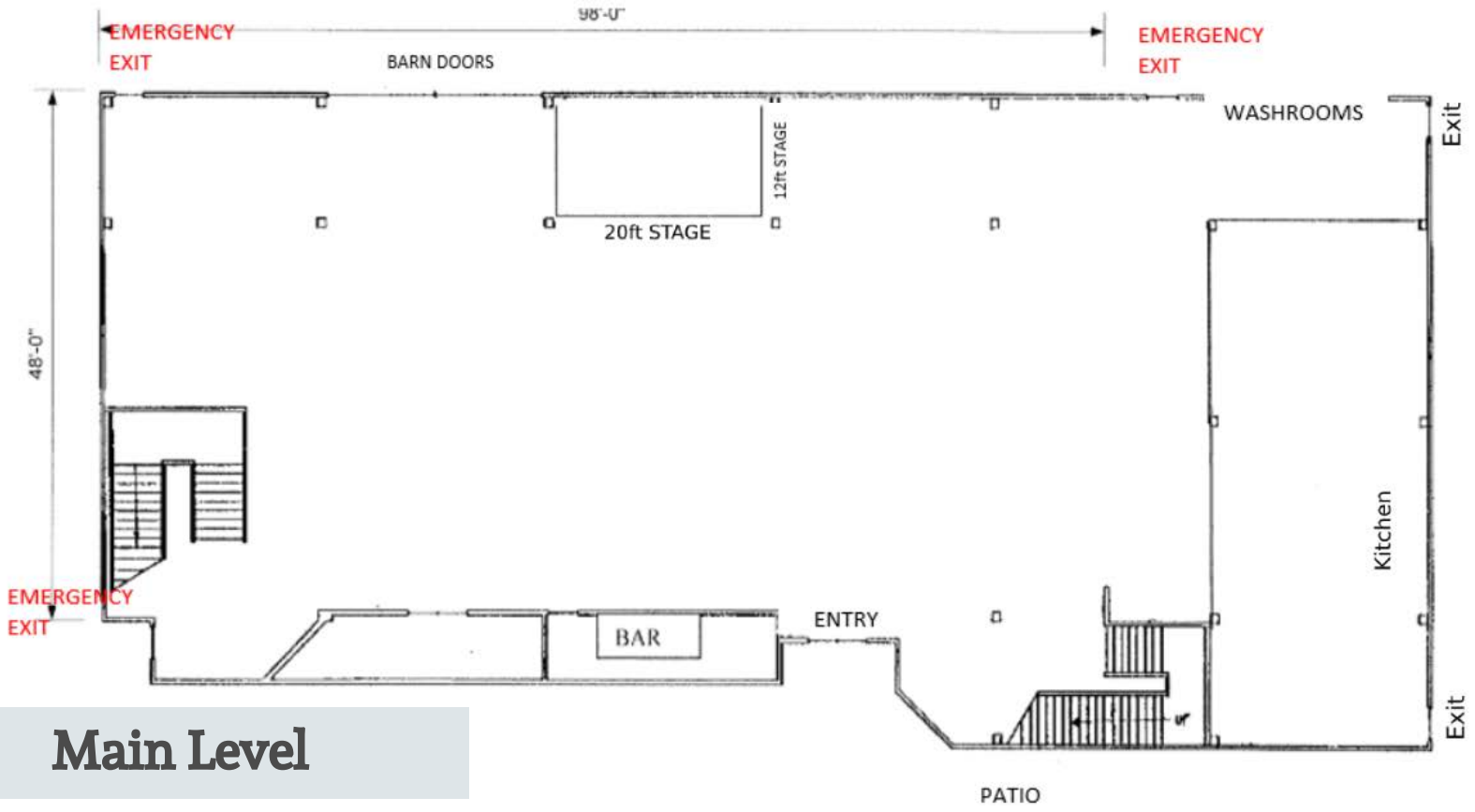
OFF-PEAK - \$3,800

Capacity

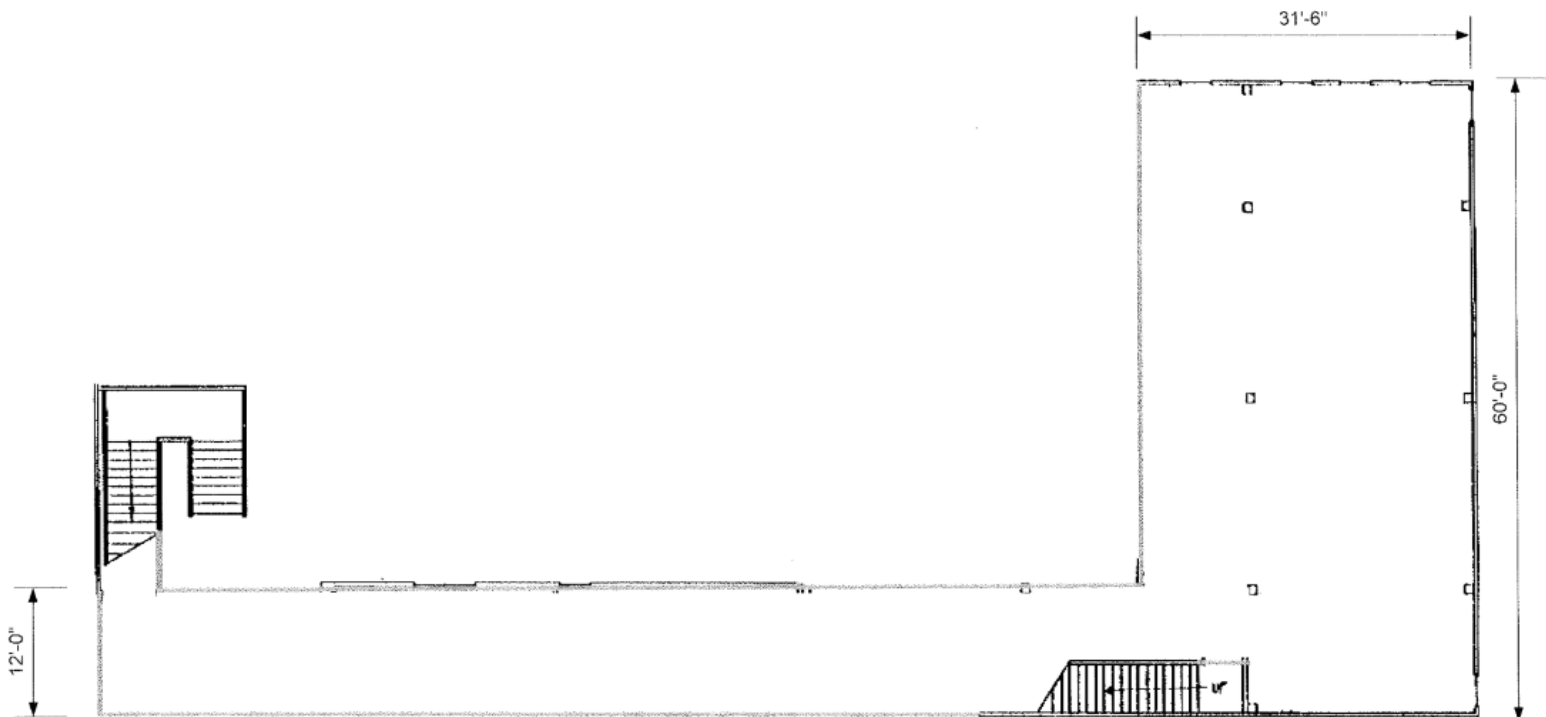
150 SEATED

Floor Plans

Gambrel Barn



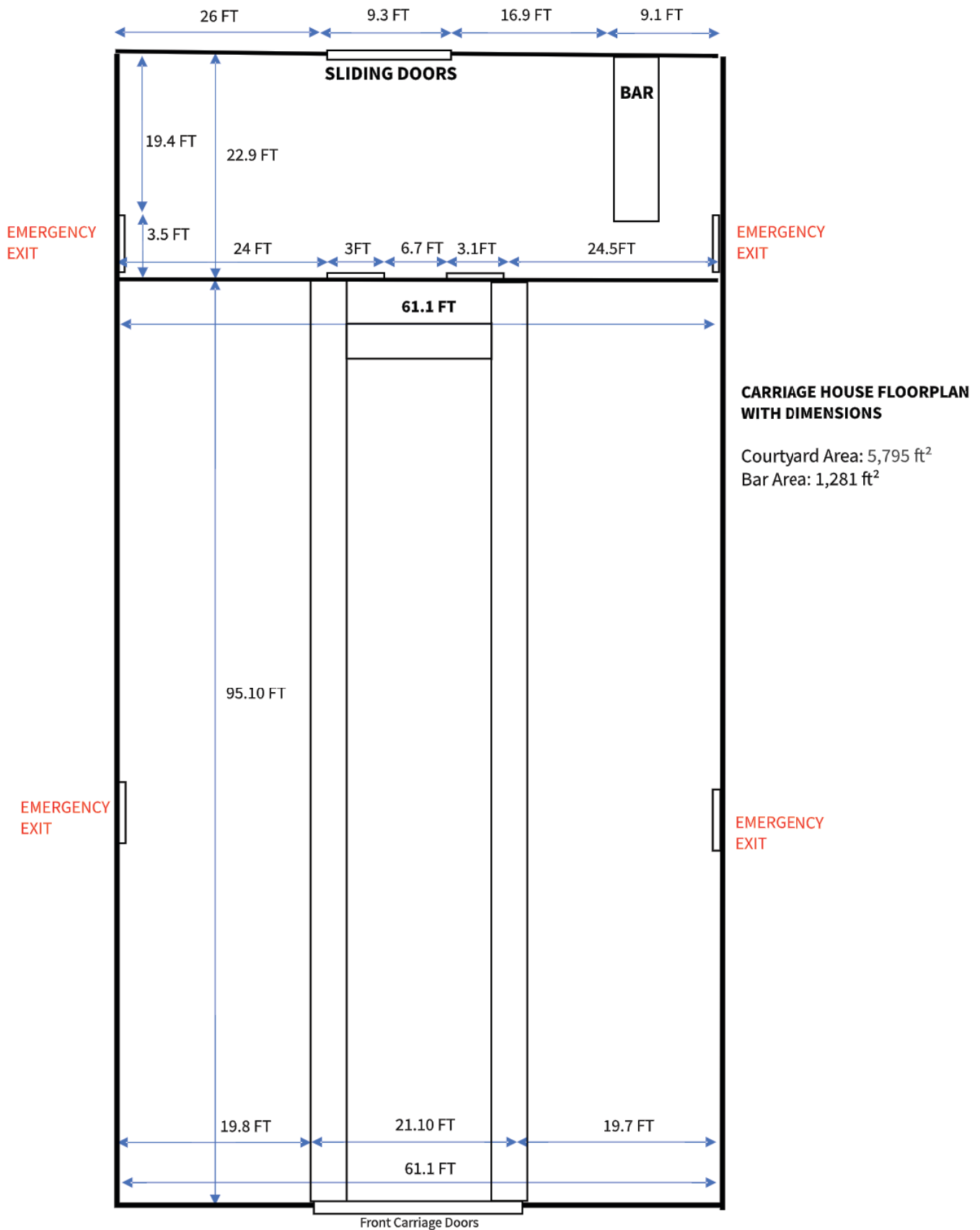
Main Level



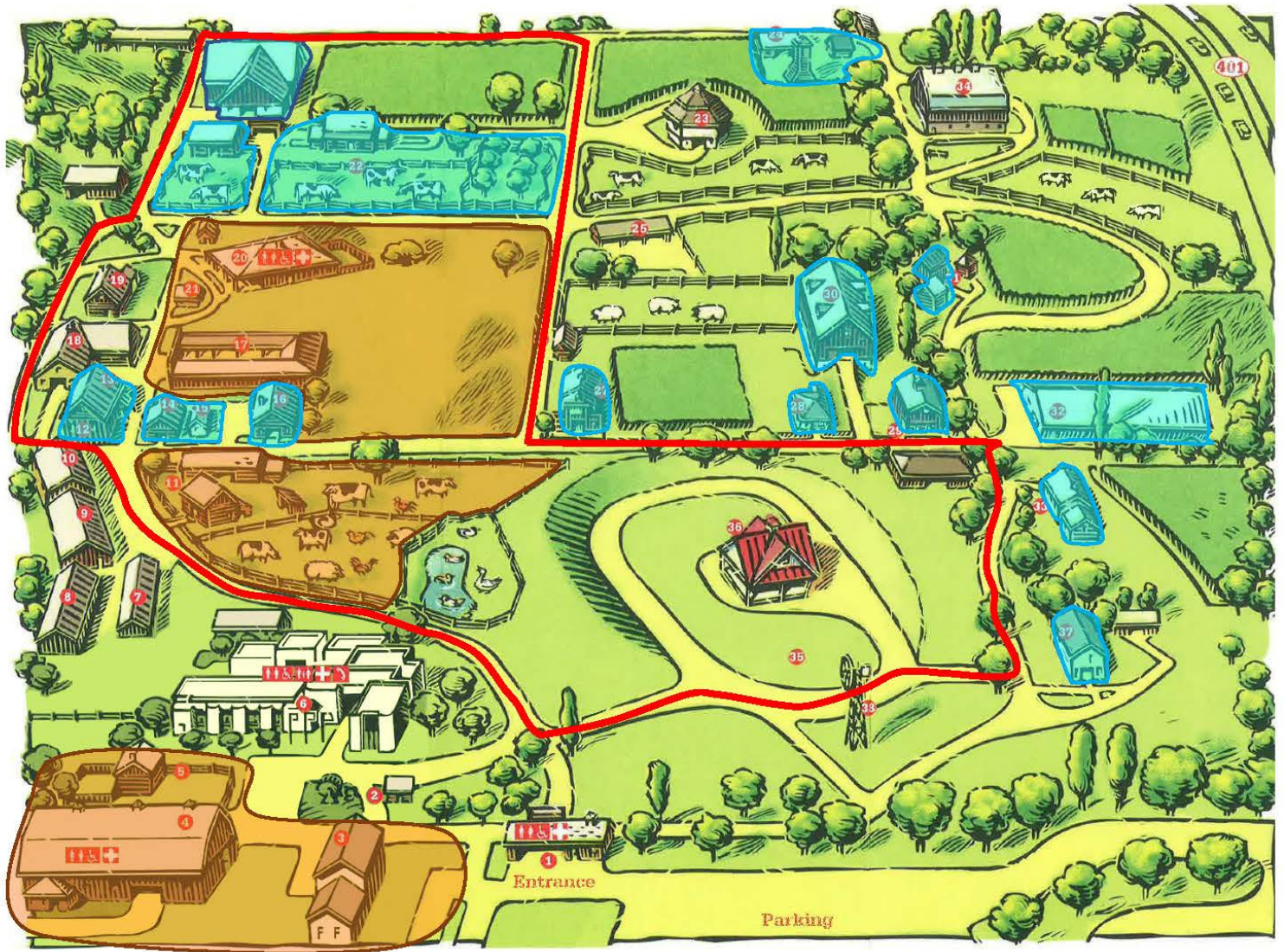
Upper Loft

Floor Plans

Carriage House



Photography Locations



ALL WEDDINGS AND EVENTS DAY OF, HAVE ACCESS TO THE PICTURE PERFECT 80 ACRES AND EXTERIOR OF ALL HISTORIC BUILDINGS.

ORANGE ZONES:

- ACTIVE EVENT AND WEDDING SITES. THESE AREAS MAY BE RESTRICTED DUE TO AN EVENT CONFLICT AND ACCESS IS NOT GUARANTEED. PLEASE INQUIRE ABOUT THESE LOCATIONS PRIOR TO.

BLUE ZONES:

- POPULAR HISTORIC AND NATURAL SITES
 - MAYNES CORNERS UNITED CHURCH, NASSAGAWEYA SCHOOLHOUSE, MASSEY HARRIS BUILDING, FORD DEALERSHIP, ELLIOTT-HARROP BARN, MOUNTVIEW WOMEN'S INSTITUTE HALL, MCDUFFE IMPLEMENT DEALERSHIP, LUCAS FAMILY HOMESTEAD, POTTER-KINDER BLACKSMITH SHOP, THE HARNESS SHOP

*NONE OF OUR HISTORIC BUILDINGS WILL BE OPENED FOR INDOOR PHOTOGRAPHY.

RED LINE:

- INDICATES THE VEHICLE ROUTE/ TRACTOR ROUTE

Bar Packages

ALL INCLUSIVE BAR | FEE: \$47.50 PER PERSON

- OPEN BAR FOR A TOTAL OF 6 HRS | BAR HOURS CAN BE SPLIT UP
- CHARGED ON GUEST COUNT OVER 19 YEARS OF AGE
- UNLIMITED NON-ALCOHOLIC DRINKS TO GUESTS UNDER 19 YEARS OF AGE
- INCLUDES 1 BOTTLE OF RED & 1 BOTTLE WHITE JACKSON-TRIGGS WINE ON EACH TABLE DURING DINNER SERVICE

CONSUMPTION BAR

- OPEN BAR | BAR TIMELINE IS DECIDED BY THE COUPLE
- BARTENDERS KEEP TRACK OF CONSUMED DRINKS WITH A TALLY SYSTEM
- DEPOSIT REQUIRED IN ADVANCE; \$500 : 50 GUESTS
- PRICES PER DRINK
 - MIXED DRINKS/ CIDER - \$6.50
 - BEER/ WINE - \$6.00
 - NON-ALCOHOLIC - \$2.00

TICKET / HOST BAR

- COUPLE DECIDES THE NUMBER OF TICKETS FOR EACH GUEST | BAR TIMELINE IS DECIDED BY THE COUPLE
- TICKETS ARE CHARGED IN ADVANCE - \$6.00/ TICKET
- TURNS INTO A CASH BAR ONCE GUEST TICKETS RUN OUT
- FOLLOWING EVENT, TICKETS ARE COLLECTED AND COUNTED

CASH BAR

- GUESTS ARE CHARGED PER DRINK
 - MIXED DRINKS/ CIDER - \$6.50
 - BEER/ WINE - \$6.00
 - NON-ALCOHOLIC - \$2.00

NON-ALCOHOLIC BAR | FEE: \$4.00 PER PERSON

- OPEN BAR FOR A TOTAL OF 6 HRS | BAR HOURS CAN BE SPLIT UP
- \$500 MINIMUM CHARGED IN ADVANCE - ADDITIONAL CONSUMPTION FEES BILLED AFTER EVENTS IF REQUIRED

ALL BAR PACKAGES INCLUDE

- PURCHASE, SALE, AND SERVICE OF ALCOHOL
- BAR TENDERS 1 : 50 GUESTS
- SECONDARY / SATELLITE BAR
- CLEAR PLASTIC BAR WARE ONLY

BAR DETAILS

- SERVICE TIME | 1:00 PM - 1:00 AM
- LAST CALL | 12:30 AM
- ALCOHOLIC SHOTS ARE NOT PERMITTED AT ANY TIME
- PREMIUM ALCOHOL BRANDS AVAILABLE UPON REQUEST FOR ADDITIONAL COSTS

House Alcohol

BEER / CIDER

- MOLSON CANADIAN
- COORS LIGHT
- BUDWEISER
- FRASER'S CIDER

LIQUOR

- SMIRNOFF VODKA
- GORDON'S GIN
- GRANTS SCOTCH
- BACARDI RUM
- WISERS RYE

WINE

- JACKSON-TRIGGS PINOT GRIGIO
- JACKSON-TRIGGS CABERNET SAUVIGNON



Preferred Caterers



AUNTY'S KITCHEN حلال

- ZUBAIR@AUNTYSKITCHEN.CA | 226-929-5903
- WWW.AUNTYSKITCHEN.CA



CATCH CATERING

- INFO@CATCHCATERING.CA | 905-469-1538
- WWW.CATCHCATERING.CA



CATERING BY GREGORY'S حلال

- CATERING@GREGORYS.CA | 905-454-8739
- WWW.GREGORYS.CA



FEAST YOUR EYES CATERING حلال

- INFO@FEASTYOUREYES.CA | 905-454-0159
- WWW.FEASTYOUREYES.CA



NOBLE CATERING

- INFO@NOBLECATERING.CA | 905-337-7337
- WWW.NOBLEHALL.CA



PARAMOUNT FINE FOODS حلال

- ALI@PARAMOUNTMILTON.CA | 647-877-8151
- WWW.PARAMOUNTFINEFOODS.COM



PIG ROAST CATERING

- INFO@PIGROASTCATERING.CA | 416-938-4853
- WWW.PIGROASTCATERING.CA



WARRAICH GROUP حلال

- SAM@WARRAICHGROUP.COM | 416-417-0800
- WWW.WARRAICHMEATS.COM



WE REQUIRE OUR CLIENTS TO BOOK WITH ONE OF OUR PREFERRED CATERERS.

Recommended Vendors

DECORATORS

FEAST YOUR EYES EVENT DECOR

- INFO@FEASTYOUREYES.CA | 905-454-0159
- WWW.FEASTYOUREYES.CA

DESIGN MANTRA

- INFO@DESIGNMANTRAA.CA | 647-998-7527
- WWW.DESIGNMANTRAA.CA

SIGNATURE WEDDINGS BY LISA

- LISA@SIGNATUREWEDDINGSBYLISA.CA | 519-835-1317
- WWW.SIGNATUREWEDDINGSBYLISA.CA

TED.CO

- INFO@THEEVENTDECORCOMPANY.COM | 416-799-9799
- WWW.THEEVENTDECORCOMPANY.COM

WITH ALL MY HEART WEDDING DECOR INC

- INFO@HEARTDECOR.COM | 905-639-9600
- WWW.WITHALLMYHEARTWEDDINGDECOR.CA

XCLUSIVE DESIGNS INC

- XCLUSIVEDESIGNS.DECOR@GMAIL.COM | 416-906-6108
- WWW.XCLUSIVEDESIGNS.CA

MASHED EVENTS

- INFO@MASHEDEVENTS.COM | 905-973-1324
- WWW.MASHEDEVENTS.COM

OFFICIANTS

ALL SEASONS WEDDINGS

- ROBB@ALLSEASONSWEEDINGS.COM | 416-738-4529
- WWW.ALLSEASONSWEEDINGS.COM

ALWAYS AND FOREVER LIFE CELEBRATIONS

- INFO@ALWAYSANDFOREVERLIFECELEBRATIONS.COM | 519-404-0789
- [HTTPS://ALWAYSANDFOREVERLIFECELEBRATIONS.COM](https://ALWAYSANDFOREVERLIFECELEBRATIONS.COM)

MARILYN ALLINGTON WEDDING OFFICIANT

- MARILYNALLINGTON@GMAIL.COM | 905-483-1195
- [HTTPS://MARILYNALLINGTON.VPWEB.CA](https://MARILYNALLINGTON.VPWEB.CA)

WEDDING STATIONARY

LOGIE PAPERIE

- INFO@LOGIEPAPERIE.COM | 519-717-9480
- WWW.LOGIEPAPERIE.COM

FLORISTS

BUSINESS IS BLOOMING

- INFO@BUSINESSISBLOOMING.CA | 905-693-6437
- WWW.BUSINESSISBLOOMING.CA

PINK PAMPLEMOUSSE FLORAL STUDIO

- HELLO@PINKPAMPLEMOUSSE.CO | 416-831-7143
- WWW.PINKPAMPLEMOUSSE.CO

THE PAISLEY ROSE

- THEPAISLEYROSEFLOWERS@GMAIL.COM
- WWW.THEPAISLEYROSE.CA



Recommended Vendors

PHOTOGRAPHERS

AMY SUE BRANT- PORTRAIT ARTISTRY

- AMYSUEMULLEN@GMAIL.COM | 647-999-7816
- WWW.AMYSUEBRANT.COM

PHOTOWORKS

- MATTHEW@PHOTOSTHATWORK.COM | 778-882-4164
- HTTPS://PHOTOSTHATWORK.COM

RED MANGO PHOTOGRAPHY

- INFO@REDMANGOPHOTOGRAPHY.COM | 647-606-7668
- WWW.REDMANGOPHOTOGRAPHY.COM

DJ SERVICES

B.O.S.S. DISC JOCKEY

- BOSSDJ@ROGERS.COM | 519-662-9969
- HTTPS://BOSSDJ.CA

FIRST CLASS ENTERTAINMENT

- FCE@ROGERS.COM | 416-617-9287
- WWW.FIRSTCLASSENTERTAINMENT.CA

NTH DEGREE ENTERTAINMENT GROUP

- INFO@NTHDEGREEGROUP.CA | 416-804-9412
- WWW.NTHDEGREEGROUP.CA

CAKES AND DESSERTS

CRAZY GOOD CAKES

- KIM@CRAZYGOODCAKES.CA | 416-771-9389
- WWW.CRAZYGOODCAKES.CA

KAYA'S KREATIONS

- TAWREEDA@YAHOO.COM | 416-727-9870
- WWW.KAYASKREATIONS.CA

LA ROSE

- 905-875-0303
- WWW.LAROSEBAKERY.COM

WEDDING PLANNERS

WESTVIEW EVENTS AND FLORALS

- INFO@WESTVIEWEVENTS.COM | 905-407-5813
- WWW.WESTVIEWEVENTS.COM

WEDDINGS AND EVENTS BY ANGELA

- WEDDINGSANDEVENTSBYANGELA@GMAIL.COM
- ANGEL CLARINO; 416-877-4528
- WWW.INSTAGRAM.COM/WEDDINGSANDEVENTSBYANGELA

ENTERTAINMENT

SNAPTIQUE

- INFO@SNAPTIQUE.CA | 647-696-6652
- WWW.SNAPTIQUE.CA

URBAN COWBOY LINE DANCING

- INFO@URBANCOWBOYLD.COM | 905-699-2828
- WWW.URBANCOWBOYLD.COM

EVENT RENTALS

MCLEAN SHERWOOD EVENT RENTALS

- PETER@MCLEANSHERWOOD.COM | 416-457-4785
- WWW.MCLEANSHERWOOD.COM

VINYL FLOOR WRAPS

NORTH FLOOR DESIGNS

- NORTHFLOOREVENTS@HOTMAIL.COM | 416-735-1100
- WWW.INSTAGRAM.COM/NORTHFLOORDESIGN

HORSE & CARRIAGE/BARAAT HORSES

PONIES R US

- INFO@THEPONYPEOPLE.COM | 905-854-7669
- WWW.THEPONYPEOPLE.COM



*We're looking forward to being
a part of your special day!*

 @COUNTRYHERITAGEPARK

 @COUNTRYHERITAGEPARK

 @CHERITAGEPARK



8560 TREMAINE RD, MILTON, ON, L9T 2X3 | 905-878-8151

INFO@COUNTRYHERITAGEPARK.COM | WWW.COUNTRYHERITAGEPARK.COM