



*Cambridge Mill*





## *Your Wedding Day*

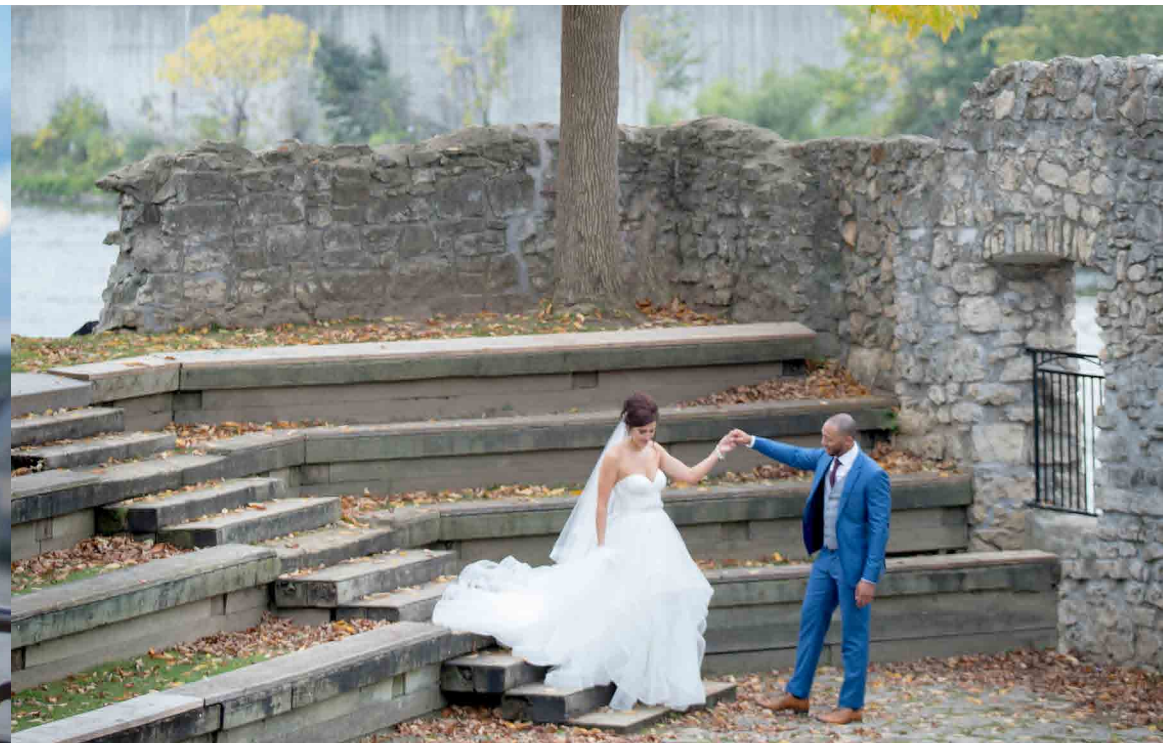
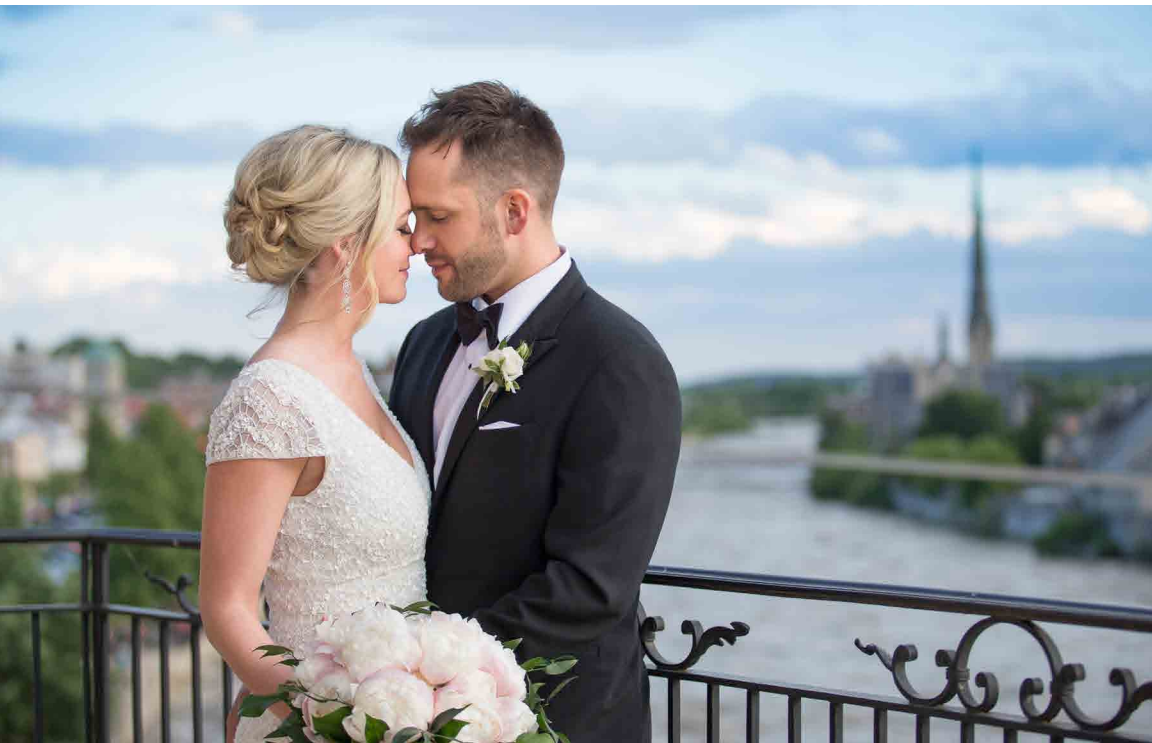
You said 'I do', and now you have a wedding to plan. Not just any wedding – one that matches the expectations of your vision.

With our expertise, experience and commitment to quality on every level, we will ensure you have a beautiful celebration. You and your guests will experience everything Cambridge Mill is famous for – a romantic ambience, fabulous food and impeccable service in a breathtaking setting.





*Capture the moment.*







## *The Pavilion*

Situated adjacent to the Grand River, this glass-encased chapel provides an incredible setting for the exchanging of vows. Designed to provide an outdoor experience while keeping guests protected from the elements, this pavilion-style chapel offers a dramatic backdrop for a wedding in any season.

Seating Capacity: 200

*View more Pavilion photos at  
[pearleweddings.ca/cambridgemill](http://pearleweddings.ca/cambridgemill)*





## *The Falls Room*

This bright and airy room epitomizes the something old, something new spirit of Cambridge Mill. Hand-carved beams, 12-foot ceilings, casement windows, exposed stonework and a double-sided fireplace offer timeless touches to your celebration. Day or night, the adjacent Solarium showcases spectacular views and romantic sunsets.

Seating Capacity: 200

*View more Falls Room photos at  
[pearleweddings.ca/cambridgemill](http://pearleweddings.ca/cambridgemill)*





## *The Gallery*

Bathed in light from our hand-blown glass chandeliers, this is our most romantic and historic setting. Beautifully restored limestone walls, dramatic 14-foot ceilings, exposed beams and pillars infuse a cozy yet sophisticated ambience, while etched glass windows complement the room's natural elements.

Seating Capacity: 130

*View more Gallery photos at  
[pearleweddings.ca/cambridgemill](http://pearleweddings.ca/cambridgemill)*





## *Waterfront Room & Garden Terrace*

Welcome your family and friends to an intimate space rich in elegance and charm. Warm heritage touches like limestone walls, coffered ceilings and a roaring wood-burning fireplace work together to create a one-of-a-kind experience. The attached Garden Terrace features retractable floor-to-ceiling glass walls for year-round enjoyment.

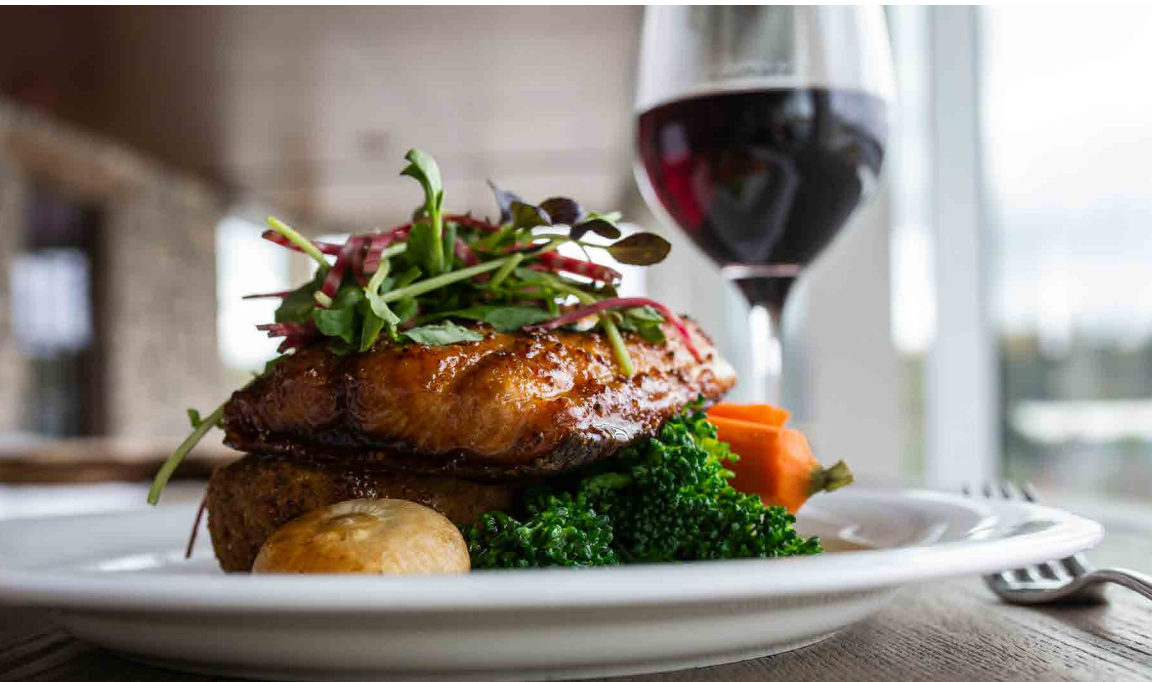
Seating Capacity: 100

*View more Waterfront Room photos at  
[pearleweddings.ca/cambridgemill](http://pearleweddings.ca/cambridgemill)*





*A gathering of family, friends, tastes and flavours.*







## *Tastes & Flavours*

Cambridge Mill is committed to using the finest locally-sourced ingredients to prepare delicious and inventive dishes. With harvest and seasonality at the forefront, Executive Chef Joel LaBute and his culinary team offer a refined approach to rustic farm-to-table cuisine, taking great care to ensure each course is stunning in taste and presentation.





*Embrace your moment!*

Ready to take the next step? Click [here](#) to book an appointment with one of our Special Events Consultants for a tour of our venue and to discuss packages, pricing and availability.

All Cambridge Mill wedding images  
by Anne Edgar Photography

Cambridge Mill  
100 Water Street North  
Cambridge, ON N1R 1P1  
519-624-1828  
[info@cambridgemill.ca](mailto:info@cambridgemill.ca)  
[www.cambridgemill.ca](http://www.cambridgemill.ca)



CAMBRIDGE  
MILL

*a Pearle Weddings & Events venue*