



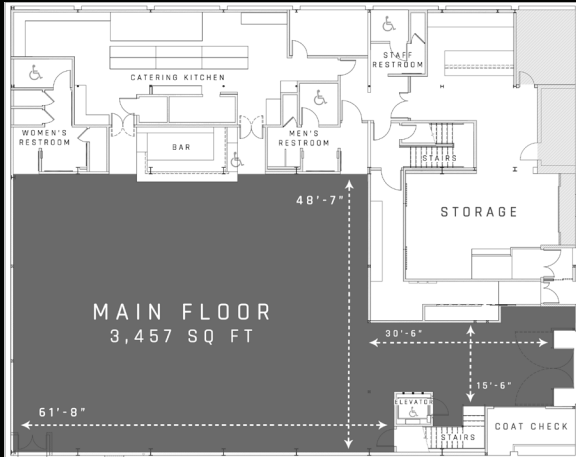
WELCOME TO THE PEARL

Located in San Francisco's waterfront Dogpatch district, [The Pearl](#) is anchored in the heart of one of the city's most historical and culturally rich neighborhoods.

Designed with both form and function, The Pearl is partnered with some of the Bay Area's top industry players to offer guests in-house versatility that goes beyond the expectations of any private venue. Complete with state-of-the-art lighting and audiovisual capabilities, gorgeous rooftop views of The Bay, and permanent art installations by Alexis Laurent, the 9,000+ square foot space is an industrial charm waiting to be transformed for your event needs.

Accommodating up to 800 guests, The Pearl features a main floor, mezzanine level, and rooftop, as well as a fully equipped catering kitchen and a top notch in-house bar program featuring the finest selections of local beer, wine, and premium spirits.

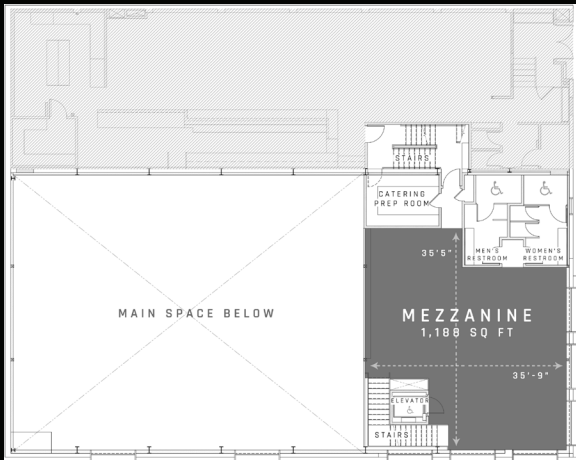
BUILDING FEATURES



3,457 Square Feet

MAIN FLOOR

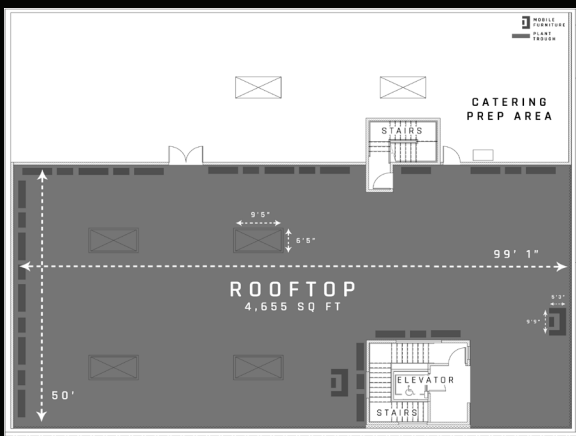
- 31-foot reclaimed cedar ceiling with skylights
- Full bar service with beer and wine on tap
- Full-scale catering kitchen with walk-in refrigerator and vendor staff room
- Extensive in-house lighting with dimming control system
- Plug and play theatrical lighting capabilities*
- 450 square foot entry way with a coat check room and ADA elevator
- FOH and BOH stairwells with access to mezzanine and rooftop levels
- Two original built-in gantry cranes that host an indoor living garden high above the main space
- Men's and women's restrooms



1,188 Square Feet

MEZZANINE

- Slim mezzanine railing – creating a visual connection and expansive view of the Main Room
- Accommodates multiple set-up types
- Massive 8'x7' windows with views of The Bay and Oakland hills
- Catering Prep Room
- Men's and women's restrooms
- Accessible by elevator, as well as both FOH and BOH stairwells



4,655 Square Feet

ROOFTOP

- Gorgeous views of Dogpatch, The Bay, and Oakland hills
- Rooftop garden
- Floor lined with Italian Porcelain tile
- Catering prep area
- Non-permanent tenting options*
- Four skylights with drink rails and views of the main floor
- Outdoor bistro string lights
- Accessible by elevator, as well as both FOH and BOH stairwells
- Outdoor lounge furniture

*Charges apply.

Space	Square Footage	Reception	Banquet*	Theater	Classroom
Main Floor	3,457	500	220	300	180
Mezzanine	1,188	80	60	50	30
Rooftop	4,655	220	220	180	-
TOTAL**	9,300	800	500	530	210

Capacities are estimates only. Maximum guest count will be determined by the event flow and room layout.

*Banquet seating is based on 60" round tables seating 10 people per table.

**The Pearl can accommodate up to 800 guests. However, due to a rooftop curfew, a maximum capacity of 500 will be applied to all events that extend past 10pm. Please reach out to your sales rep for more details.

AMENITIES

WHEN RENTING THE VENUE FOR A FULL 10-HOUR RENTAL, THE PEARL PROVIDES:

- Natural wood folding chairs for up to 150 guests*
- Ten (10) cocktail tables*
- Five (5) 8-foot banquet tables*
- Fifteen (15) 60" round tables*
- Six (6) outdoor patio umbrellas
- Rooftop lounge furniture (2 sets)
- Six (6) floor standing halogen outdoor heaters on the rooftop
- Two (2) mbps wifi - upgrade options up to 100 mbps
- Permanent art installations by Alexis Laurent
- Heating & air conditioning
- Post-event janitorial
- On-site venue manager
- Staffed coat check
- Bicycle parking

*Labor charges apply.

Need a custom quote for your event? We're here to help. Please contact Sarah Zembo at Sarah@thepearlsf.com for assistance.

VENDOR PARTNERS

CATERING



CONTACTS

Betty Zlatchin Catering • Dave Zlatchin • (415) 641-8599 • David@bettyzlatchin.com

Bi-Rite Catering & Events • Jazzi Walker • (415) 321-8070 x 8820 • eventcatering@biritemarket.com

Estate Events by Meadowood • Jenny Schmieleski • (707) 967-1251 • estateevents@meadowood.com

Foxtail Catering & Events • Kismat Dhanoa • (925) 336-6199 • Kismat@Foxtailcatering.com

Global Gourmet Catering & Events • Jennifer Shortridge • (510) 209-5605 • Jen@ggcaterring.com

Jessica Lasky Catering • Hilary Munday • (415) 786-2862 • Hilary@jessicalasky.com

La Bonne Cuisine Catering & Events • Fernando Ciurlizza • (510) 549 3760 • info@labonnecuisine.com

Melons Catering & Event Planning • David Martin • (650) 583-1756 • Dmartin@melonscatering.com

Paula LeDuc Fine Catering & Events • Justine Savor • (510) 547-7825 • Justine@paulaleduc.com

Taste Catering & Event Planning • An Nguyen • (415) 550-6464 • An@tastecatering.com

AUDIO/VISUAL

got light.

[Got Light](#) is the Bay Area's premier wedding and event design production team with over 35 years of event experience. The Pearl is exclusively partnered with Got Light on all things light and sound to bring guests cutting edge audiovisual technology featuring state-of-the-art lighting, video, audio, drape, staging, and more.

- Dramatic Uplighting
- Intelligent Lighting Packages
- Custom Logo Projection
- Pattern/Texture Projection
- Accent Lighting & Table Pin Spotting
- Dance, Band & Concert Lighting
- Illuminated Décor & Chandeliers

For a custom quote, contact pearl@got-light.com



RENTALS & DECOR



[Bright Event Rentals](#) is The Pearl's preferred rental partner. Known for their wide range of equipment and rental services, excellence in event décor, and attention to detail, Bright's event specialists will ensure that your vision is realized from design to delivery.

For more information, please contact Melanie Leinweber at MLeinweber@brightrentals.com



HOTEL PARTNERSHIPS

The Pearl is proud to partner with Hotel Vitale, Hotel Via, and the Viceroy Hotel Group – home to Hotel Zelos, Hotel Zeppelin, and Hotel Zetta – to offer the best in hospitality experience to our guests.



HOTEL VITALE

SAN FRANCISCO

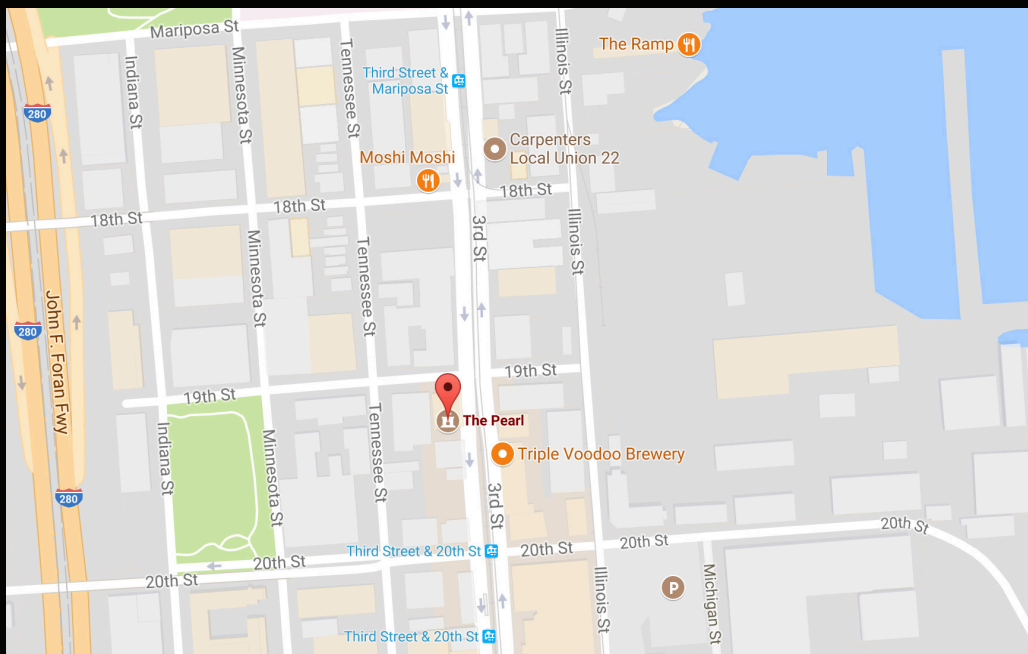
For individual reservations and group blocks at Hotel Vitale, please contact Monica Lostica at mlostica@hotelvitale.com

For individual reservations and room blocks at Hotel Via, please contact Lorenzo Martinez at lorenzo@hotelviasf.com, or book directly with promo code PEARL for a 15% discount.

For individual reservations and room blocks with Viceroy Hotel Group, contact Kylie Ranger at kylie.ranger@viceroyhotelgroup.com.

LOCATION

Located in the sunny Dogpatch neighborhood of San Francisco, The Pearl is easily accessible by public transportation – K & T Third Street Light Rail; 22 and 48 Muni bus routes; 22nd Street Caltrain Station – and by car via Highway 280, Mariposa Street Exit.



FAQ

What are The Pearl's hours of operation?

Our office hours are Monday through Friday from 9:00am to 5:30pm.

How many hours are included with the rental?

10 hours. Additional hours available at a rate of \$500.00 + tax.

Does The Pearl offer partial buyouts?

The Pearl offers full buyouts of the venue inclusive of all three floors. Partial buyouts may be available for short-term leads within 30 days of the event date.

Is the rooftop terrace included?

Yes, our event rental fees are inclusive of a full building buyout. The 4,655 SF rooftop terrace is ideal for cocktail, receptions, and wedding ceremonies. Tenting is available when arranged in advance; charges apply. All rooftop events have a 10:00pm curfew.

What about parking?

The Pearl can assist you in arranging valet parking for your event and partners with Pristine Parking as a preferred vendor. We encourage guests to carpool, use shuttle services, or public transportation when possible.

Is there a non-profit discount?

Yes, we offer a 20% discount on the venue rental fee for 501(c)(3) organizations. Restrictions apply.

When can I view the Pearl?

Based on availability, site visits can be scheduled Monday - Friday between 9am to 6pm. Please contact Sarah Zembo at (415) 269-7171 x1003 to make an appointment.

