



Imagine a tropical land accessible only by sea, covered with dense, untamed flora and fauna.

This was West Palm Beach in the late 1800s, America's last bit of uncharted territory. The area's rugged mystique drew high-society expats Byrd and Fred Dewey, who built Ben Trovato — an estate on the shore of Lake Worth Lagoon. Capturing the spirit of the age and putting West Palm Beach on the map, Ben Trovato was a grand and whimsical home, transformed into a beacon of culture — reimagined today at The Ben Hotel.



Hotel Amenities

- ☞ Express elevator service to rooftop experience, complete with bar, outdoor pool with private cabanas, and fire pit
- ☞ Full-service dining room with elevated seasonal menu providing a fresh and creative dining offering
- ☞ In-room dining options for breakfast, lunch, and dinner
- ☞ 24-hour expanded fitness center
- ☞ All day coffee bar on lobby level
- ☞ Hydration stations on each floor
- ☞ Complimentary WiFi throughout common areas and rooms
- ☞ Complimentary concierge services
- ☞ Mobile check-in/mobile key accessibility
- ☞ Onsite valet parking

Room Features

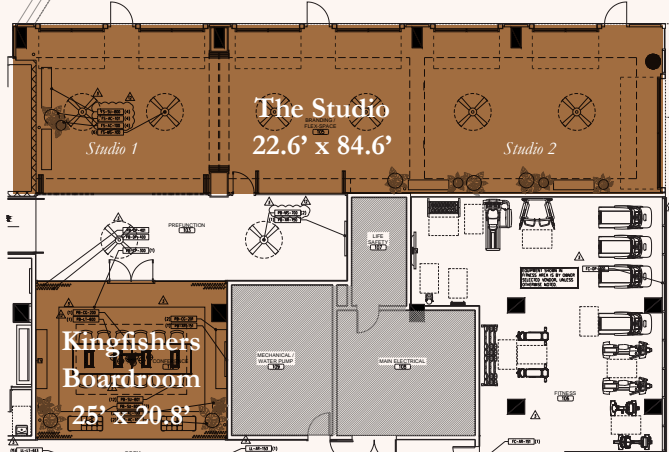
- ☞ Rich décor blending Palm Beach tradition with modern flair
- ☞ Luxury bedding package featuring 100% Turkish linens
- ☞ Spa-styled bath amenities and plush guest robes
- ☞ Nespresso coffee maker and in-room refrigerator
- ☞ 55" television with streaming connectivity
- ☞ Balconies with water views in select rooms
- ☞ 12 King Suites with expansive floor plans and upgrades
- ☞ Connecting rooms available
- ☞ Pet friendly atmosphere



Your host with the most
 The Ben is all about warm and generous hosting. Whether you're celebrating or ideating, do it with us.

The Studio & Kingfishers Boardroom

Lobby Level - 266 Capacity



Kingfishers Boardroom

- ☞ Traditional space designed for small corporate meetings, interviews, legal proceedings, and more
- ☞ Located on lobby level accessible to hotel restaurant, business center, and guest services

The Studio

- ☞ Conveniently located off lobby for excellent accessibility and event creativity
- ☞ Flexible space that brings the outside in, with garage-style doors that connect to the street

Blue Heron Ballroom

- ☞ Rooftop venue with downtown's only stunning marina, water views, and outdoor terrace
- ☞ Ideal for highly spirited events up to 500 attendees
- ☞ Flexible to meet your event needs, whether you are hosting a corporate party, social event, fundraiser, or romantic wedding with configurable options and customized menus and décor
- ☞ Ideal for inspirational events from car launches, fashion shows, pop-ups, art galleries, and corporate brainstorming

Eventing Details

Full catering menu options available to meet a range of budgets and gathering types, including:

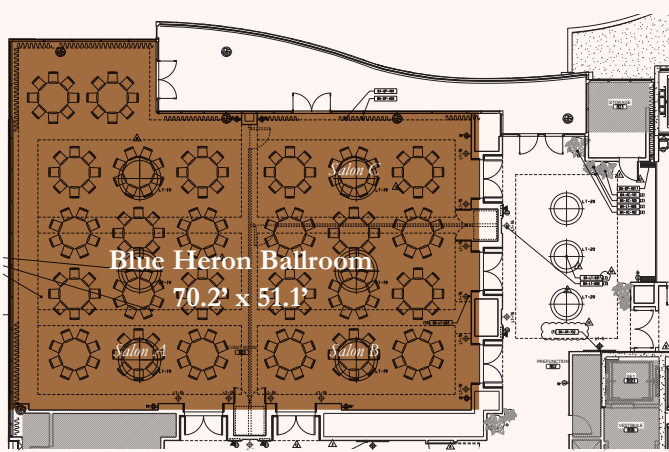
- ☞ Ceremonies, dinners, and receptions
- ☞ Lunch gatherings and presentations
- ☞ Breakfast events
- ☞ Creative breaks
- ☞ Pre-event functions
- ☞ Cocktail parties

Full onsite AV

Event specialists on staff for seamless planning and support

Blue Heron Ballroom

Roof Level - 500 Capacity



1. Palm Harbor Marina
2. Clematis Entertainment District
3. Downtown West Palm Beach
4. Rosemary Square (formerly CityPlace)
5. Kravis Center
6. Palm Beach County Convention Center
7. Palm Beach
8. Worth Avenue



For more information regarding group rooms or event pricing at The Ben, contact our Sales & Service Team at 561-655-4001

251 N Narcissus Ave, West Palm Beach, FL 33401

TheBenWestPalm.com