



- SIX UNIQUE VENUES -

# BERKELEY

EVENTS

416-361-9666

INFO@BERKELEYEVENTS.COM

WWW.BERKELEYEVENTS.COM

- SIX UNIQUE VENUES -

# BERKELEY

EVENTS

Operating Toronto's most unique event venues since 1999, launching with the much-acclaimed 1871 Berkeley Church, Berkeley Events has expanded to include The Berkeley Field House, Airship37, La Maquette, The Berkeley Bicycle Club, The Berkeley Innovation Centre and our newest venue, Bright Lights. Our versatile venues can accommodate everything from a mingling cocktail party to a seated dinner. Whether you're planning a corporate function or private party, our professional staff will assist you in creating an event that is a true reflection of your distinctive style ensuring a memorable experience for you and your guests.

As a full-service event company, Berkeley Events excels at crafting exceptional experiences. Our remarkable chefs, memorable staff and efficient planners comprise what we like to call the Berkeley experience: always unforgettable, always special.

Our sales team will consult with you around your event needs and provide a comprehensive quote including our in-house services. Additional configurations available. Please inquire for more detail on special room capacities.

[LEARN MORE](#)



B E R K E L E Y   E V E N T S

# THE CHURCH

**MAIN FLOOR** Features inside the Grand Ballroom include the grand heritage wall and 450 sq. ft stage opposite the Victorian inspired bar. The 19th-century stained glass windows extend from the original hard wood floors to the 60ft cathedral ceilings.

**THE CIRCA 1871 LOUNGE** With its exposed brick and warm fireplaces, this space lends to many pre-dinner cocktail receptions. It's even the perfect location for a small gathering when larger spaces aren't necessary. Includes access to a wine cellar and courtyard patio.

**THE MEZZANINE** From a vantage point above the main floor, the Mezzanine offers your guests the opportunity to survey the action below. With its classic beauty of exposed brick and 17 ft high stained glass windows, this multi-functional area is perfect for a cocktail reception, presentation or full-service dinner.

**VENUE RATES** Monday + Tuesday **\$1800** | Wednesday to Friday **\$3100** | Saturday **\$3800** Half Day Rates | Monday to Thursday [7am - 4pm] **\$1500** | Friday to Sunday [7am - 3pm] **\$2000**

C A P A C I T Y   5 8 0   S T A N D I N G   O R   3 3 0   S E A T E D

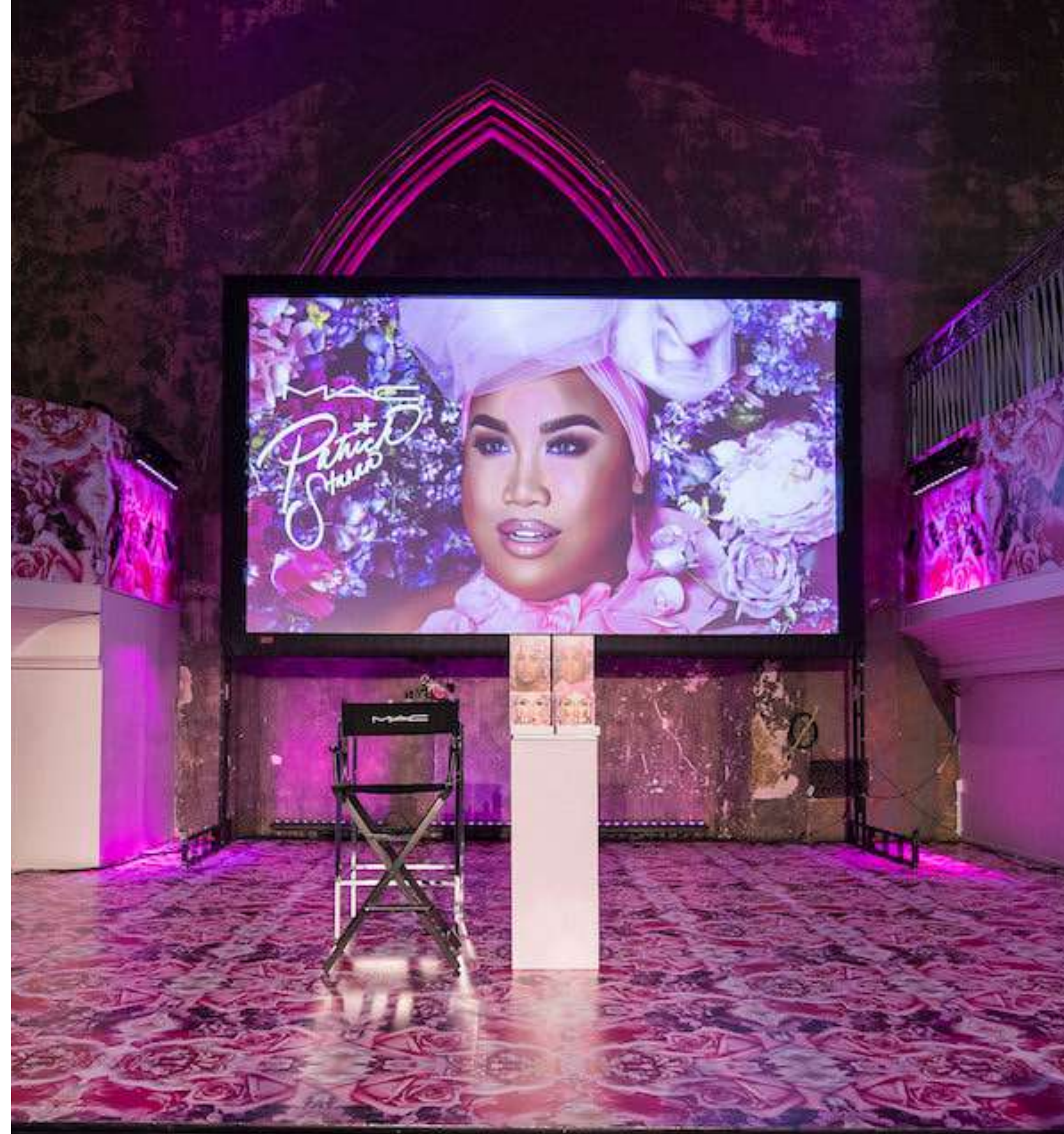


PHOTO CREDIT: ARTHUR MOLA

B E R K E L E Y   E V E N T S

# THE FIELD HOUSE

With 18-foot ceilings, exposed beams and walls of antique white, the main space accommodates a sit-down event for up to 150 guests. The west wall is made of glass French-doors that open to provide access to the landscaped Garden Deck

**THE TREE HOUSE** Two-storey tree house, (top floor heated and air-conditioned); included with rental of the Field House.

**GARDEN PATIO** Paying homage to old town Toronto, this outdoor oasis features a stream that is the original waterway from the 1800's. Included with the venue is a 15x40 ft. tent extension, set up pavilion style throughout the summer months.

**THE PRIVATE DINING ROOM** This space is one of Berkeley's most unique creations. Using some of our most inventive props and designs, we've created a warm and inviting environment perfect for small gatherings or as a private getaway during a larger function.

**VENUE RATES** Monday + Tuesday **\$1800** | Wednesday to Friday **\$3100** | Saturday **\$3800** Half Day Rates | Monday to Thursday [7am - 4pm] **\$1500** | Friday to Sunday [7am - 3pm] **\$2000**

C A P A C I T Y   1 5 0   S T A N D I N G   O R   1 5 0   S E A T E D



PHOTO CREDIT: MAURICIO JOSE CALERO

BERKELEY EVENTS

# AIRSHIP 37

A refined mix of the eclectic and minimalist styles makes Airship37 the ideal venue for any type of event: product launches to client appreciation parties, holiday celebrations to daytime meetings, photo shoots to VIP galas and concerts to weddings.

**THE GOODERHAM LOUNGE** The Gooderham Lounge has a built-in customized bar, stylish lounge furniture, and an original antique Parisian chandelier. A 1,200 sq ft space that accommodates your guests for a cocktail reception

**THE HANGAR** The hangar is a clean, large, open white space with a state of the art sound system and lighting package. 2,430 sq ft space that accommodates a cocktail reception or seated dinner

**VENUE RATES** Monday + Tuesday **\$1800** | Wednesday to Friday **\$3100** | Saturday **\$3800** Half Day Rates | Monday to Thursday [7am - 4pm] **\$1500** | Friday to Sunday [7am - 3pm] **\$2000**

CAPACITY: 400 STANDING OR 180 SEATED



PHOTO CREDIT: JOULIE WHEELER

B E R K E L E Y   E V E N T S

# LA MAQUETTE

La Maquette is an Art Deco, two-story gem, with a beautiful upstairs solarium, a private Dining Room looking out to St. James Cathedral, and a gorgeous side patio facing Toronto's famous Sculpture Garden. A venue perfect for semi-private lunches and dinners, Corporate Evenings and any style of Wedding.

**THE GROUND LEVEL** The reception area, designed in an empire style, features a checkered Italian marble floor which can be used as a dance floor, and for cocktail receptions,

## LEVEL TWO

**CATHEDRAL ROOM:** Our cathedral room can be totally private up to 30 guests, with on a 2 long tables of 16 and 14 parallel to each other or 18 boardroom style, it can also open up to the main area.

**MAIN ROOM:** Formal dining up to 78 guests or 140 Standing.

**SOLARIUM:** Glass enclosed atrium overlooking the Sculpture Garden and dining under the stars,

**VENUE RATES** Monday + Tuesday **\$1800** | Wednesday to Friday **\$3100** | Saturday **\$3800** Half Day Rates | Monday to Thursday [7am - 4pm] **\$1500** | Friday to Sunday [7am - 3pm] **\$2000**

C A P A C I T Y :   2 0 0   S T A N D I N G   O R   1 5 0   S E A T E D



PHOTO CREDIT: ARTHUR MOLA

B E R K E L E Y   E V E N T S

# BICYCLE CLUB

A picturesque red brick mansion with heritage woodwork, original lighting fixtures, and intricate hardwood flooring, embraced by a patio licensed for 190. Once a Gooderham family home, the Berkeley Bicycle Club encapsulates 125 years of history and sophistication, ideal for any occasion.

**PATIO** Surrounded by an iron fence and lush hedge this patio has space for 190 people. With focal pin lighting and warm glow of the lamp posts, the red brick is the perfect backdrop to any event.

**CONSERVATORY BAR** The south facing veranda was transformed into a glassed-in conservatory. Complete with marble bar top, the floor to ceiling windows illuminate the day and the funky fixtures accent the night.

**LIBRARY, MUSIC ROOM & PICKFORD LOUNGE** Three cozy, intimate rooms with original fireplaces and pocket doors for privacy, showcase the ultimate in vintage luxury. Ideal for your intimate dinner or enthusiastic seminar.

**VENUE RATES** Sunday to Wednesday **\$1500** | Thursday + Friday **\$2000** | Saturday **\$2900**

C A P A C I T Y   1 5 0   S T A N D I N G   O R   8 0   S E A T E D



PHOTO CREDIT: SCARLETT O'NEILL

B E R K E L E Y   E V E N T S

# BRIGHT LIGHTS

Bright Lights provides over 3,500 square feet of customizable and naturally lit event space. Located in Toronto's vibrant Yonge & Eglinton neighbourhood, it is considered one of city's premier event venues. Our striking new event space features an open floor plan that can be customized to fit your vision. With a stunning 30ft glass bar, elevated lounge and seating area and indoor greenhouse, this is the kind of event canvas you will love to decorate. As if the greenhouse itself isn't reason enough to check out this Toronto gem, floor to ceiling windows along the East wall provide ample natural light and a breathtaking view of the city. Romantic touches really round out the serenity of the setting.

**VENUE RATES** Sunday to Wednesday **\$1500** | Thursday + Friday **\$2000** | Saturday **\$2900**

C A P A C I T Y   1 4 0   S T A N D I N G   O R   8 0   S E A T E D





- SIX UNIQUE VENUES -

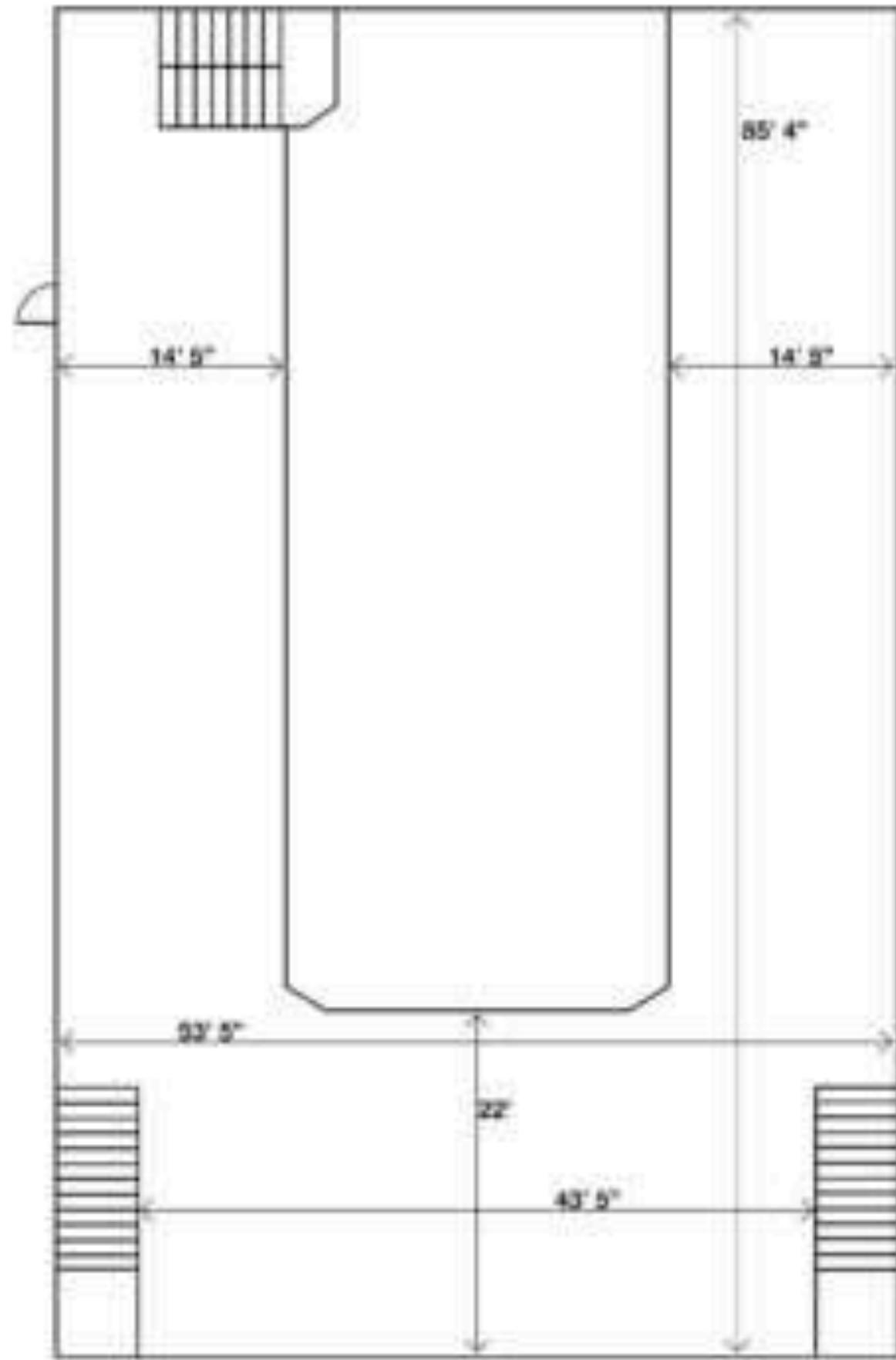
# BERKELEY

EVENTS

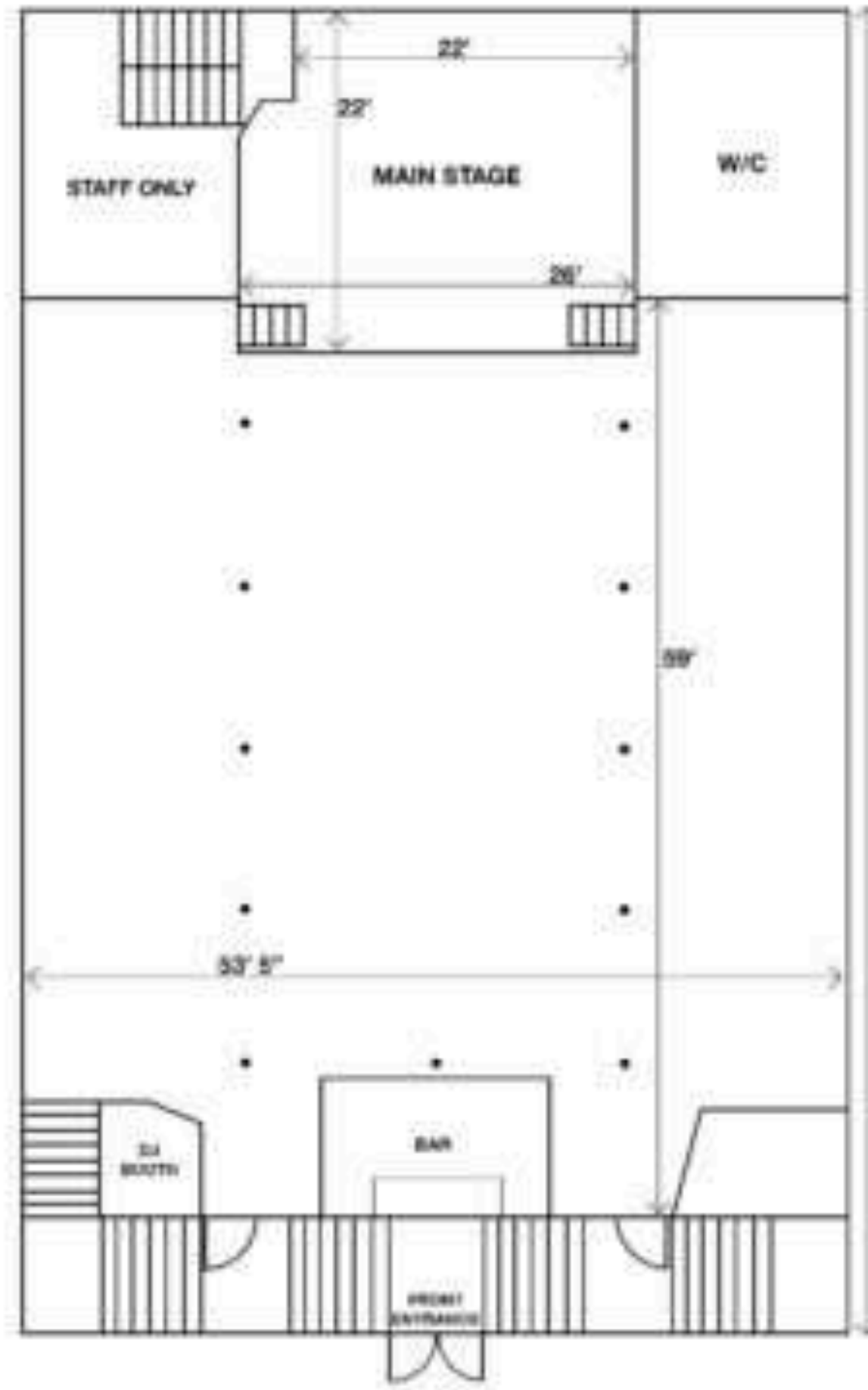
FLOOR PLANS

# THE BERKELEY CHURCH

SECOND FLOOR/MEZZANINE  
3,862 SQ FT



MAIN FLOOR  
3,671 SQ



GROUND FLOOR



↓  
N  
'1871' BERKELEY CHURCH  
315 QUEEN ST. E.  
SEATED  
OR STANDING

QUEEN ST EAST

# THE BERKELEY FIELD HOUSE

## BERKELEY FIELD HOUSE

311 QUEEN ST. E

150 SEATED ROUNDS

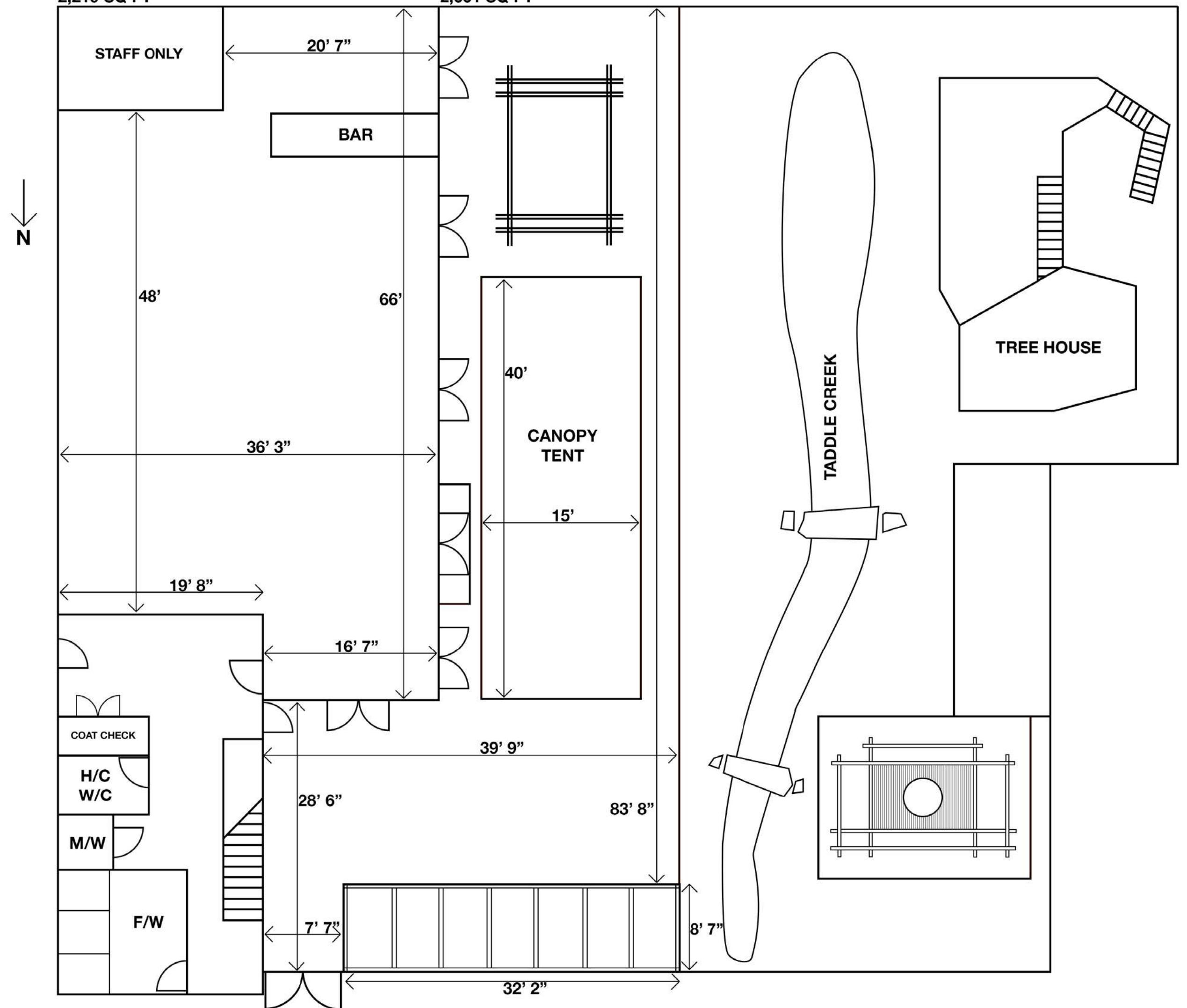
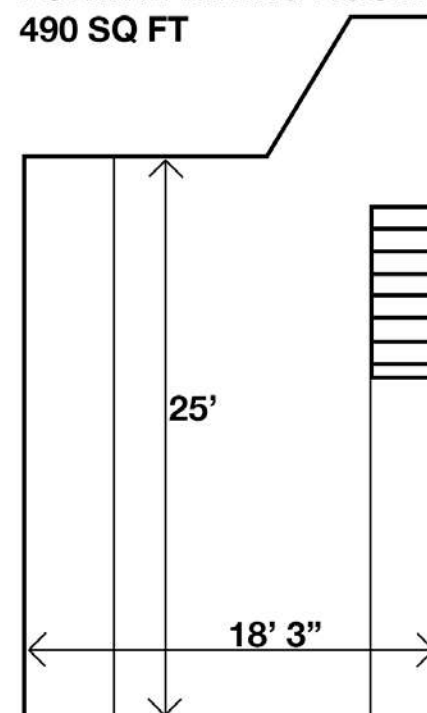
150 STANDING

150 THEATRE STYLE

MAIN EVENT SPACE  
2,219 SQ FT

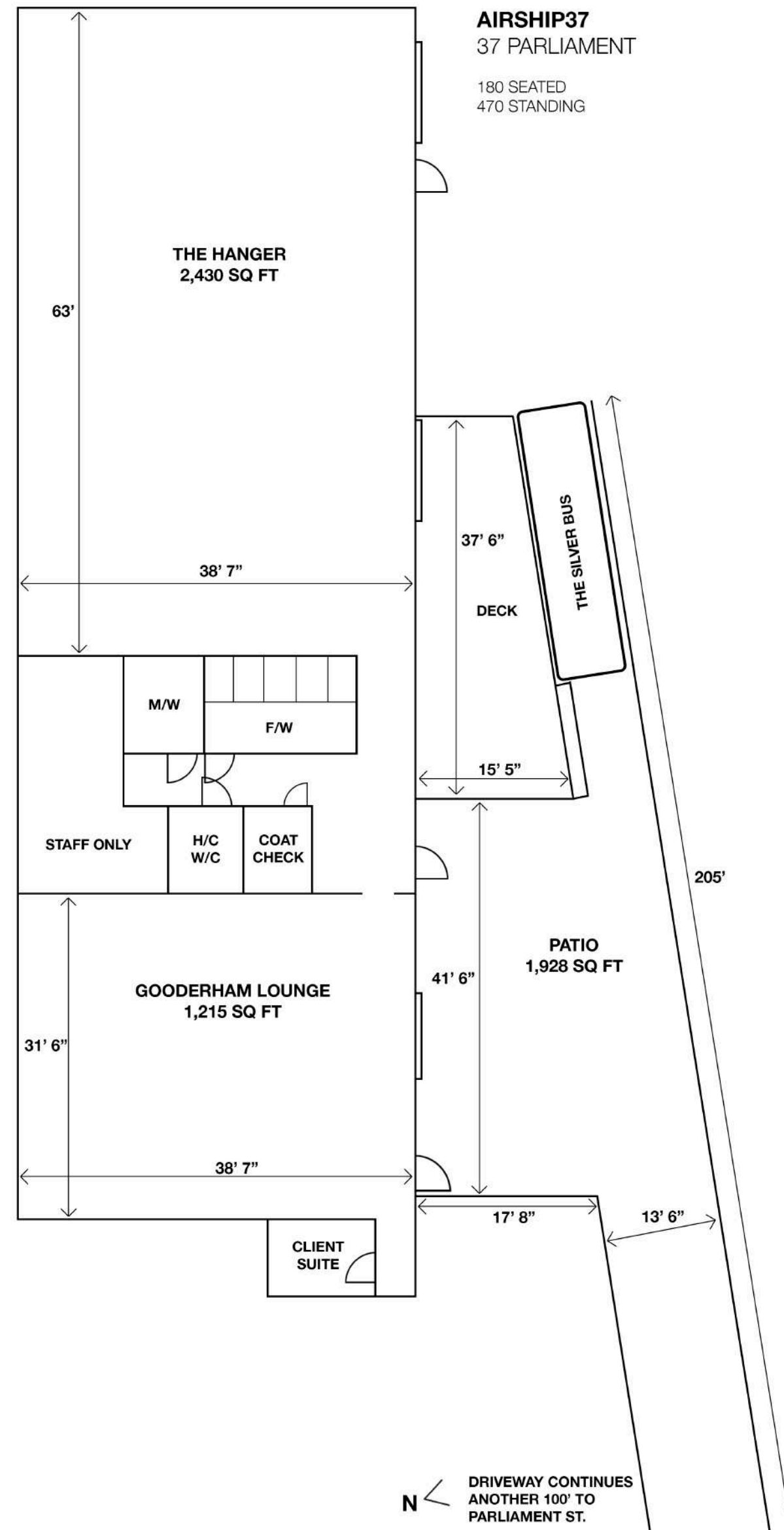
OUTDOOR AREA  
2,661 SQ FT

SECOND FLOOR  
FORMAL DINING ROOM  
490 SQ FT



QUEEN ST EAST

# AIRSHIP 37

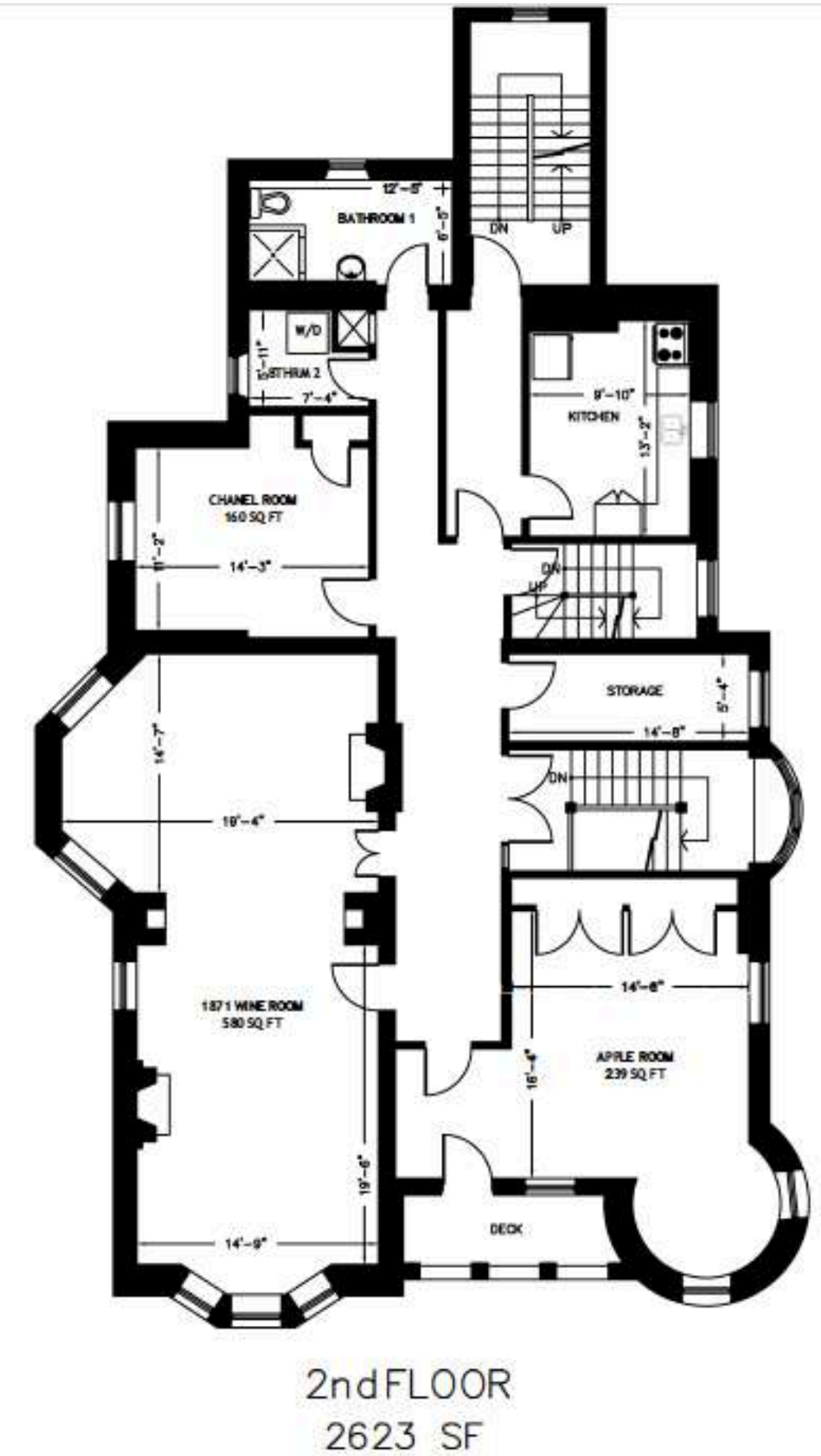
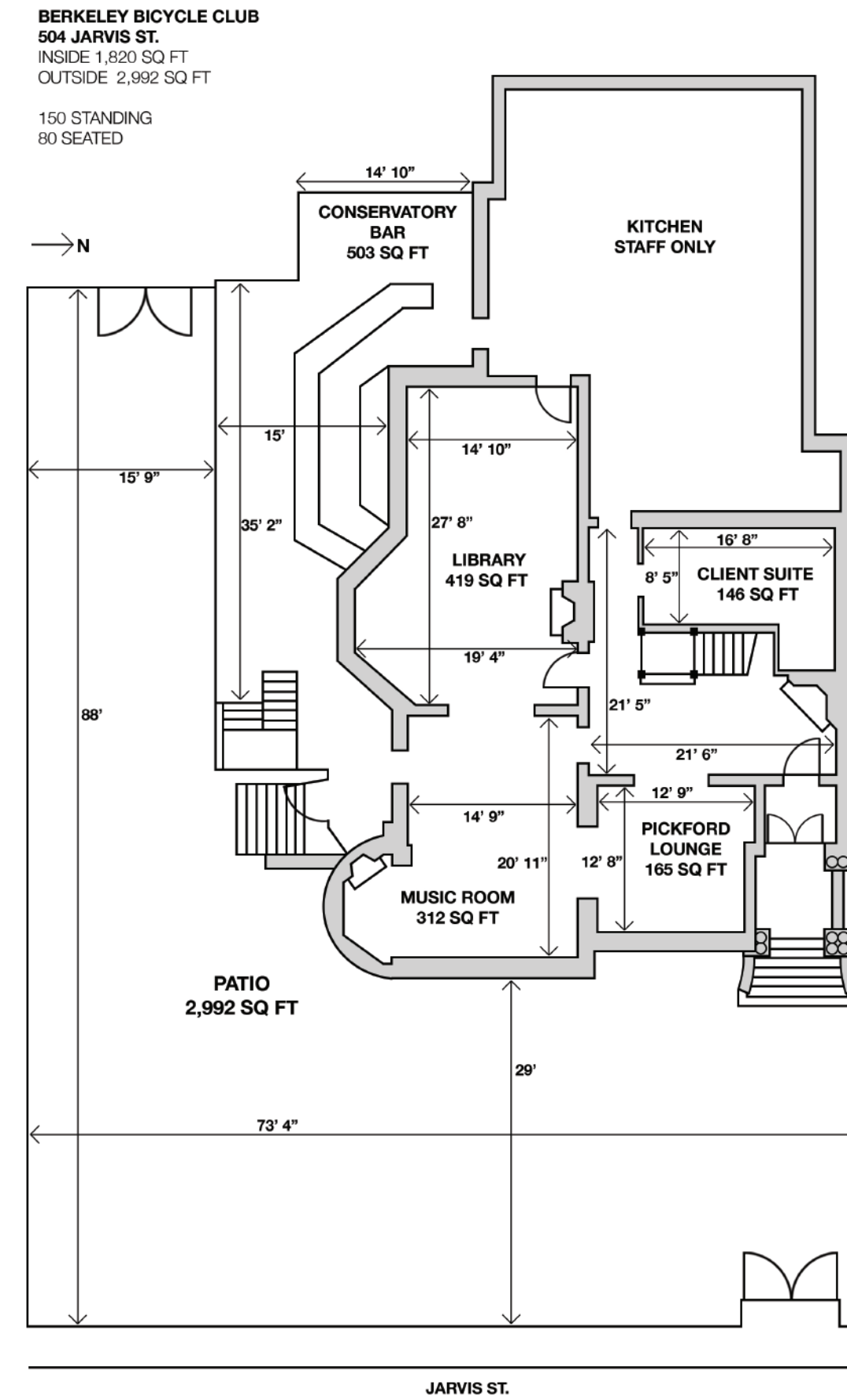
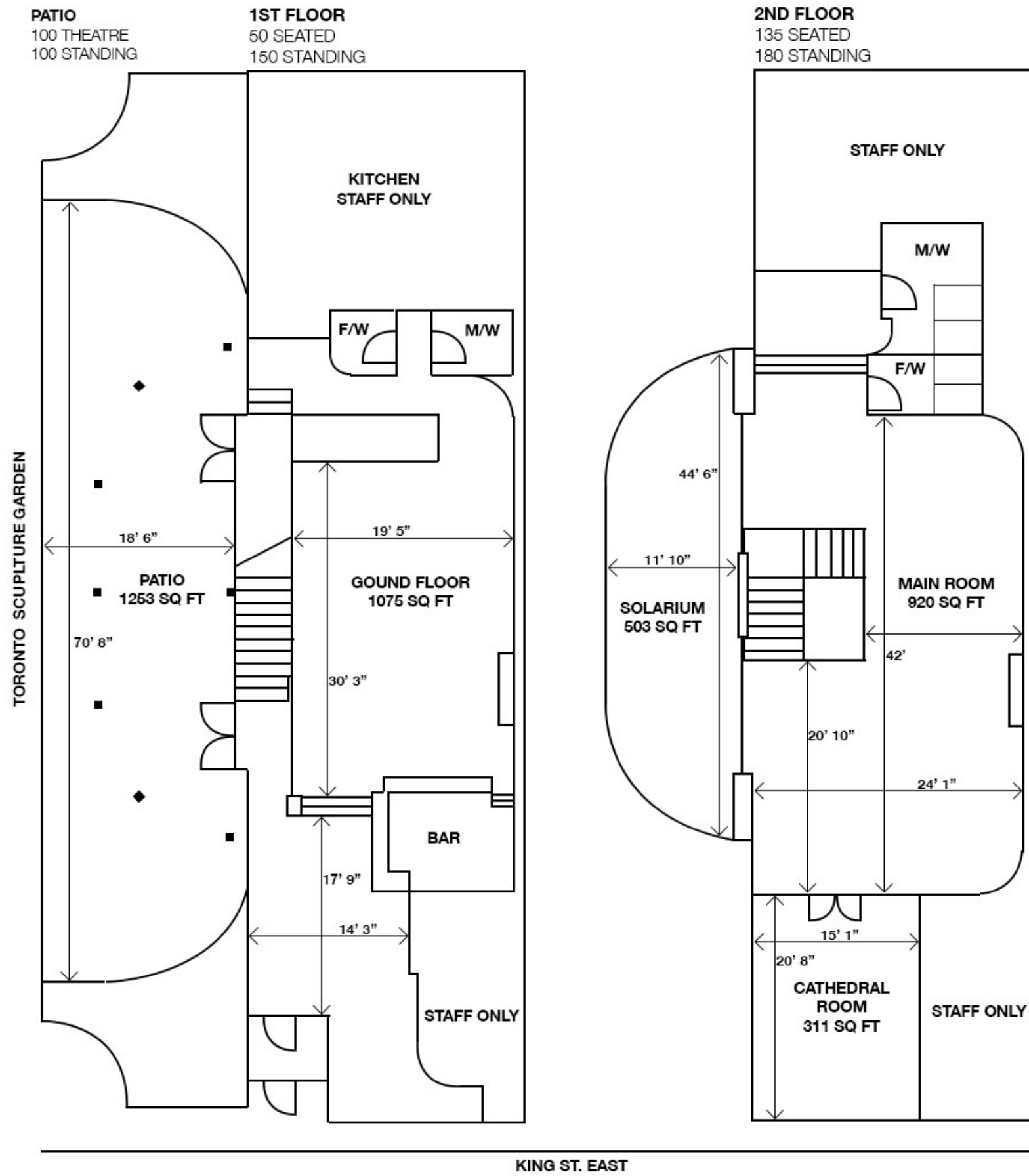


\*Please note: All measurements are in feet.

# BRIGHT LIGHTS

# LA MAQUETTE

LA MAQUETTE  
111 KING ST. EAST



# BERKELEY BICYCLE CLUB

- SIX UNIQUE VENUES -

# BERKELEY

EVENTS

416 - 361 - 9666

INFO@BERKELEYEVENTS.COM

WWW.BERKELEYEVENTS.COM