

SOUTH
PARK

CENTER



SOUTH PARK CENTER

OVERVIEW

Located just blocks away from the Staples Center in Downtown Los Angeles, South Park Center is the premiere venue in the LA LIVE!/South Park Center District.

South Park Center is a LEED Platinum certified building that offers unique venue spaces, including a penthouse loft with unrivaled views of the Downtown Los Angeles skyline.

If you are looking for a venue that is truly Los Angeles, look no further than South Park Center.

CITY VIEW PENTHOUSE

City View Penthouse is located on the 30th floor of South Park Center. With the north side available for independent use or in conjunction with the south side, the City View Penthouse can accommodate groups ranging from 20 - 400 guests. Use of the penthouse also includes access to the stunning City View Deck.

Include in each rental is:

Air Conditioning

100 Self Parked parking spaces (valet available at additional cost)

LBA Rentals (see Appendix A)

Building Staff including: Security, Janitorial, & On-Call Building Engineer

Built in A/V System with 20 x 20 projector screen

Venue space until 12:00am

PER DAY RATES

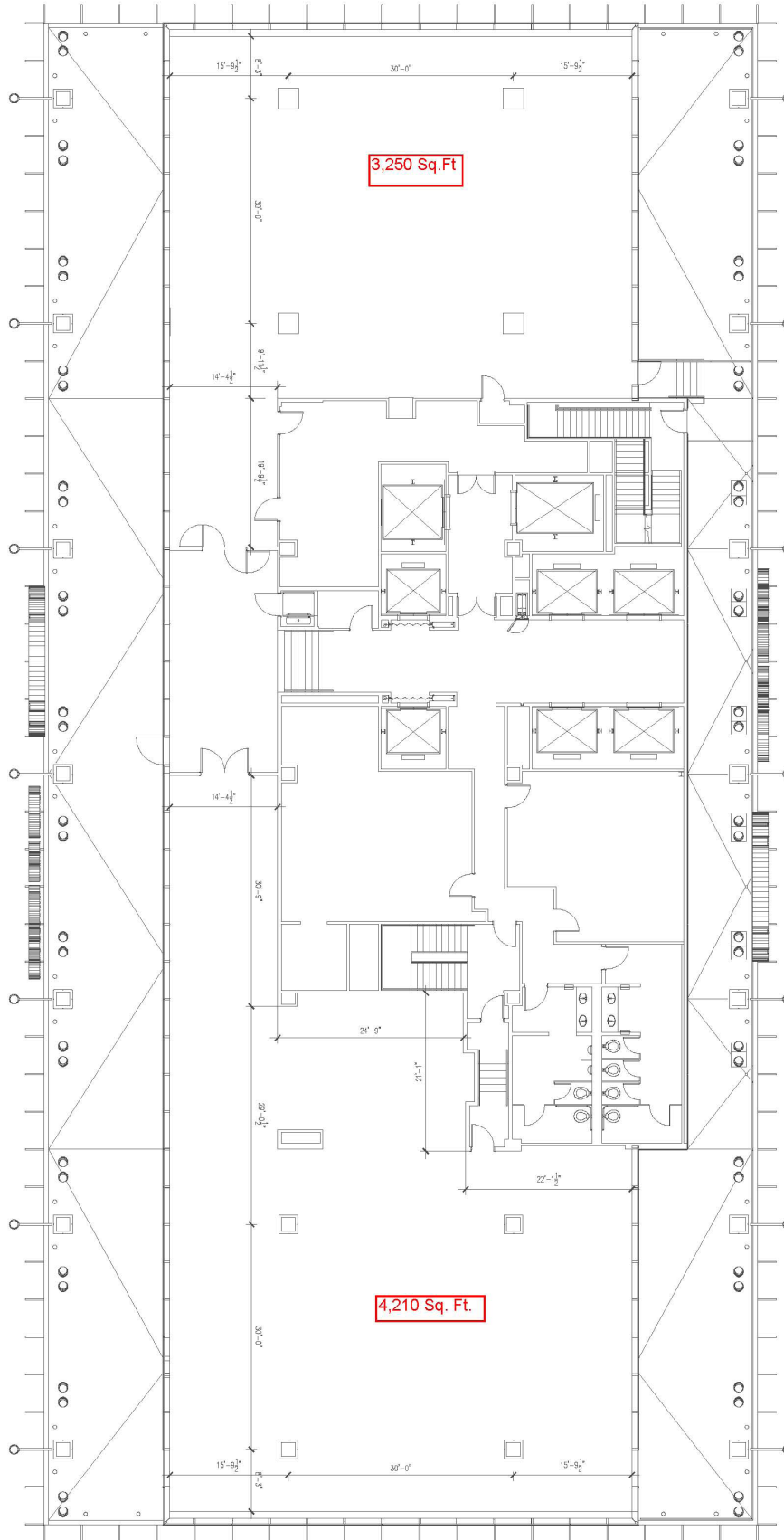
City View North & Deck
\$7,500

Full Floor & Deck
\$11,500



CITY VIEW PENTHOUSE

NORTH SIDE



SOUTH SIDE

THEATER

The Theater at South Park Center is multiuse space that has been home to film festivals, conferences, live performances, and numerous other events. With seating for up to 500 guests, an adjacent foyer for receptions, and a private entrance, the Theater is the ideal space for a variety of large gatherings.

Included in each rental is:

Air Conditioning

Building Staff including: Security, Janitorial,
& On-Call Building Engineer

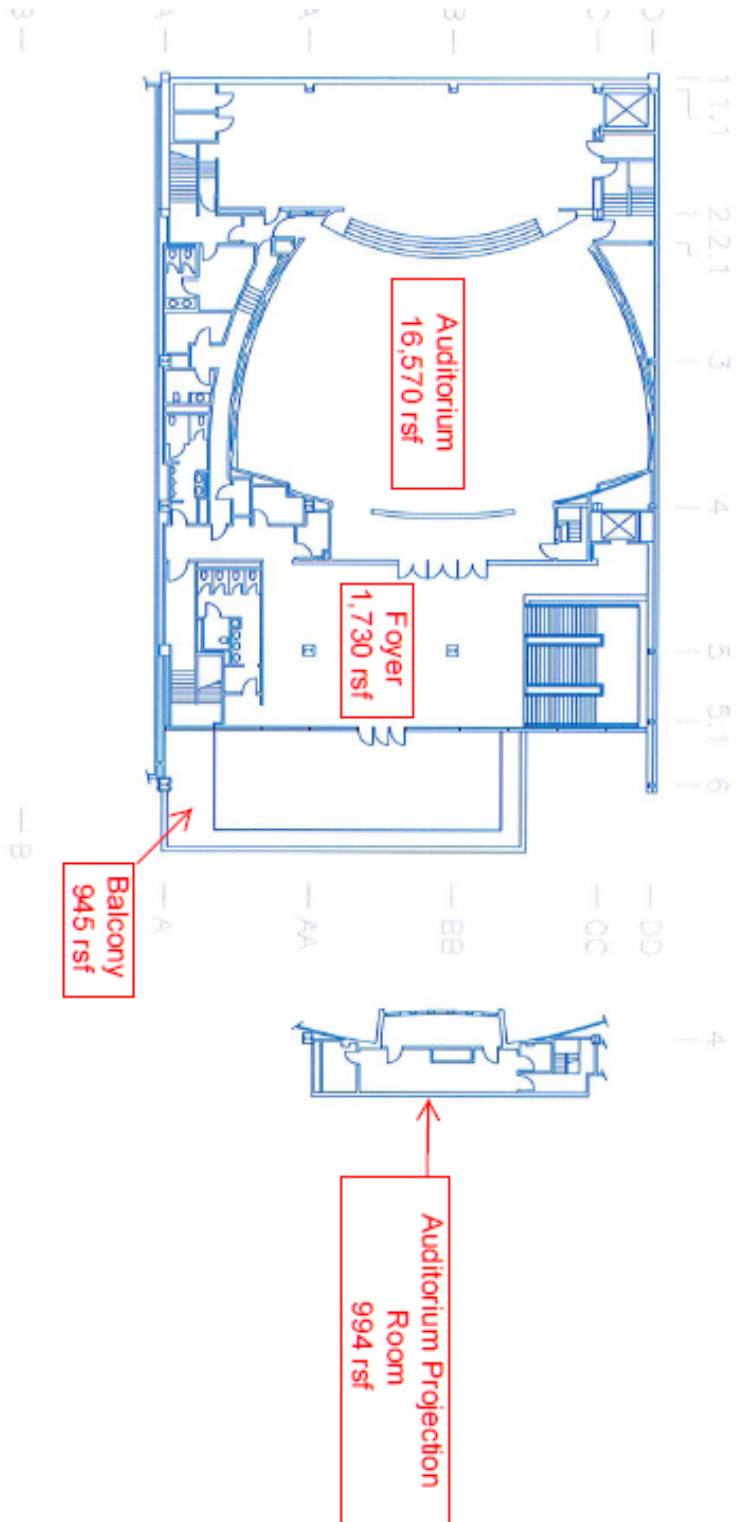
Built in A/V System

PER DAY RATE

\$5,500



THEATER



CONFERENCE ROOM

The Conference Room features modern seating for up to 45 guests. Built-in AV systems are available for guests to use for presentations, meetings, and gatherings of all kinds. Guests are welcome to utilize Patina Catering for meetings or can direct guests to adjacent retailers including Starbucks, Trimana, Cilantro, & Subway.

Included in each rental is:

Air Conditioning

Building Staff including: Security, Janitorial,
& On-Call Building Engineer

Built in A/V System

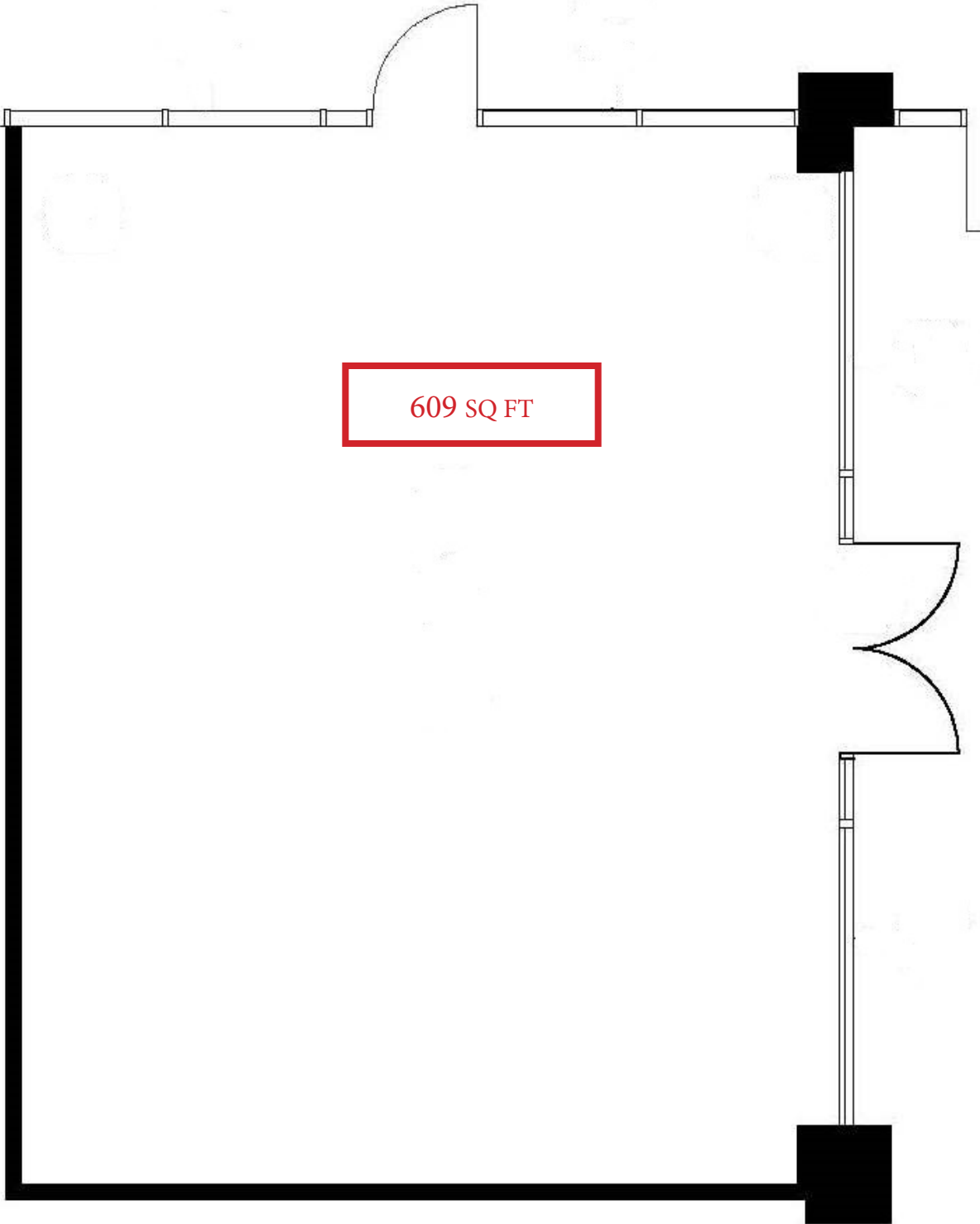
Half-Day
\$300

RATES

Full Day
\$500



CONFERENCE ROOM



HELIPAD

The helipad at South Park Center is available for both photo shoots and helicopter landings. Used independently or in conjunction with an event, the helipad offers users a truly one-of-a-kind view of Downtown Los Angeles.

RATES

Photo shoot
(non-commercial)

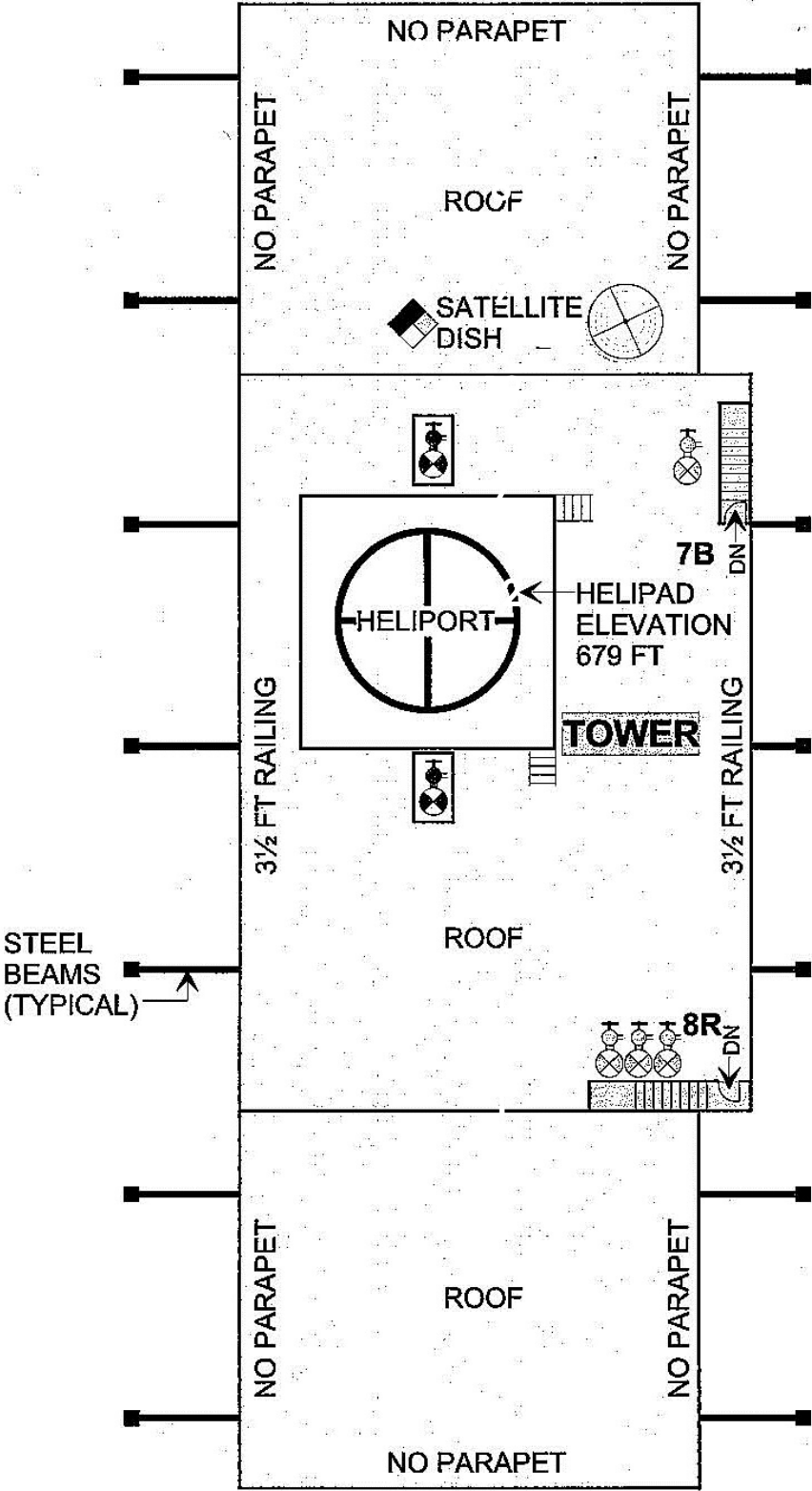
Four Hour Shoot - \$750
Eight Hour Shoot - \$1,500

Helicopter Landing

Single Landing - \$2,500



HELIPAD LAYOUT



FURNITURE INCLUDED WITH VENUE

(APPENDIX A)

ITEM	AVAILABLE
Round Plastic Tables (72")	8
Round Wood Tables (72")	9
Round Wood Tables (60")	19
Rectangular Plastic Tables (8')	7
Rectangular Plastic Tables (6')	12
Rectangular Plastic Tables (5')	4
Deck Heaters	3
High Top Cocktail Tables (30")	7
Lt. Brown Wood Chairs	49
White Acrylic Chairs	219
Clear Acrylic Podium	1

FURNITURE INCLUDED WITH VENUE

(APPENDIX A - CONTINUED)

ITEM

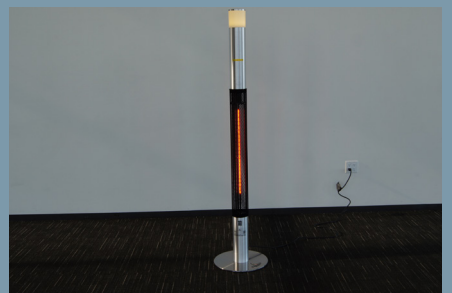
Round Tables
(72" Plastic) - 8 available
(72") - 9 available
(60") - 19 available



Rectangular Plastic Tables
(8') - 7 available
(6') - 12 available
(5') - 4 available



Deck Heaters
3 available



High Top Cocktail Tables
(30") - 7 available



FURNITURE INCLUDED WITH VENUE

(APPENDIX A - CONTINUED)

ITEM

Lt. Brown Wood Chairs
49 available



White Acrylic Chairs
219 available



Clear Acrylic Podium
1 available





For additional questions or to rent one of the spaces
available at South Park Center,
please contact

Adriana Silva
Marketing & Facilities Coordinator
asilva@lbarealty.com
(213) 741-7402