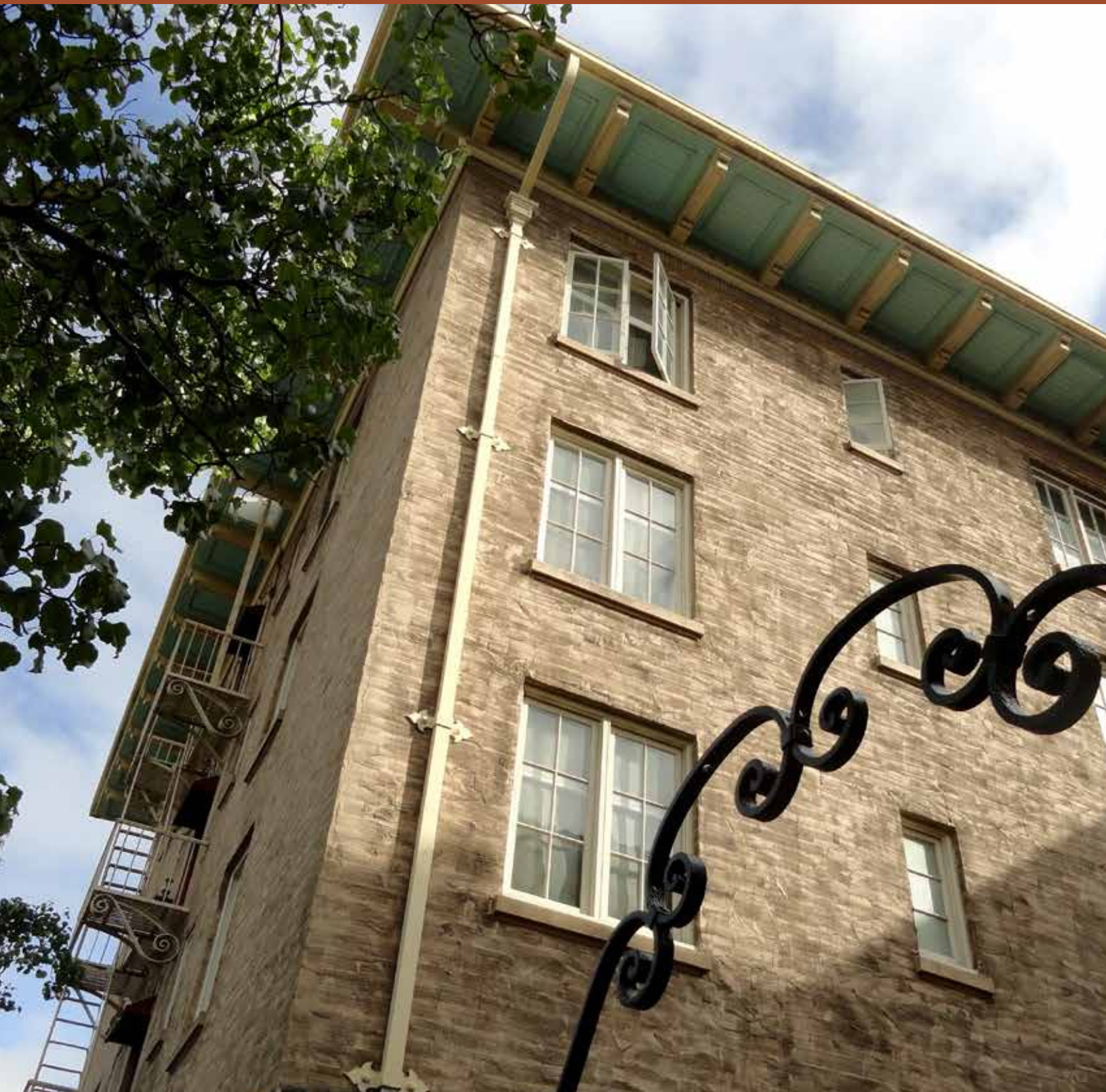


HP

HOTEL PETALUMA

ESTABLISHED 1923

*Meetings & Special Events*







# HOTEL PETALUMA

ESTABLISHED 1923

# HP

205 Kentucky Street, Petaluma, CA, 94952 | [HotelPetaluma.com](http://HotelPetaluma.com) | (707)559.3393

*Historic Hotel Petaluma provides stylish boutique lodgings with elegant meeting spaces in the heart of wine country. Natural light-filled meeting rooms encourage productive and creative sessions.*

*Located in the heart of downtown Petaluma guests are just steps away from restaurants, shopping and entertainment. Onsite wine tasting room, fireplace lounge and restaurant provide ultimate networking spaces.*



# *Goldman Ballroom*







## *Downtown Petaluma*

*Surrounded by vineyards and scenic farmland, Petaluma is located just 40 miles north of San Francisco. This small town has a unique charm and history. Today it has developed into one of the “Nation’s Top Ten Getaways Near a Major City” according to Travel & Leisure Magazine.*

*Guests at Hotel Petaluma are just steps away from the downtown district. This vibrant area is full of restaurants, coffee shops, unique shopping, relaxing spas, salons, art galleries and live entertainment. Perfect for exploring between meetings or relaxing after hours.*

*Numerous parks, walking trails and gyms are available in the downtown area. With so many downtown attractions, your day will transition seamlessly from business to pleasure.*

*Ask us about group tours and team building activities. Local favorites include farm tours, food tours, wine tastings, culinary adventures, billiards and brews, live music and theatre outings.*

# *Brooklyn Boardroom*







## *Petaluma Attractions*

*Kayaking and paddleboarding on the Petaluma River*

*Two Public 18-hole Golf Courses in Petaluma*

*Premium Outlet Mall just minutes away*

*World-class antiques and shopping*

*Culinary Adventures-Farm and food tours*

*Craft beer tasting, including world-famous Lagunitas*

*Barber Cellars Wine tasting room*

*Unique, locally-owned boutique shops*

*Live theatre and music venues*

*Farmers markets and farm-to-table restaurants*

*Pampering at downtown spas, massage therapists and salons*

*Walking tours of historic homes*

*Petaluma Arts Center and fine art galleries*

*Hiking at Schollenberger Park*

*35 miles to Napa Valley wineries and historic sites*

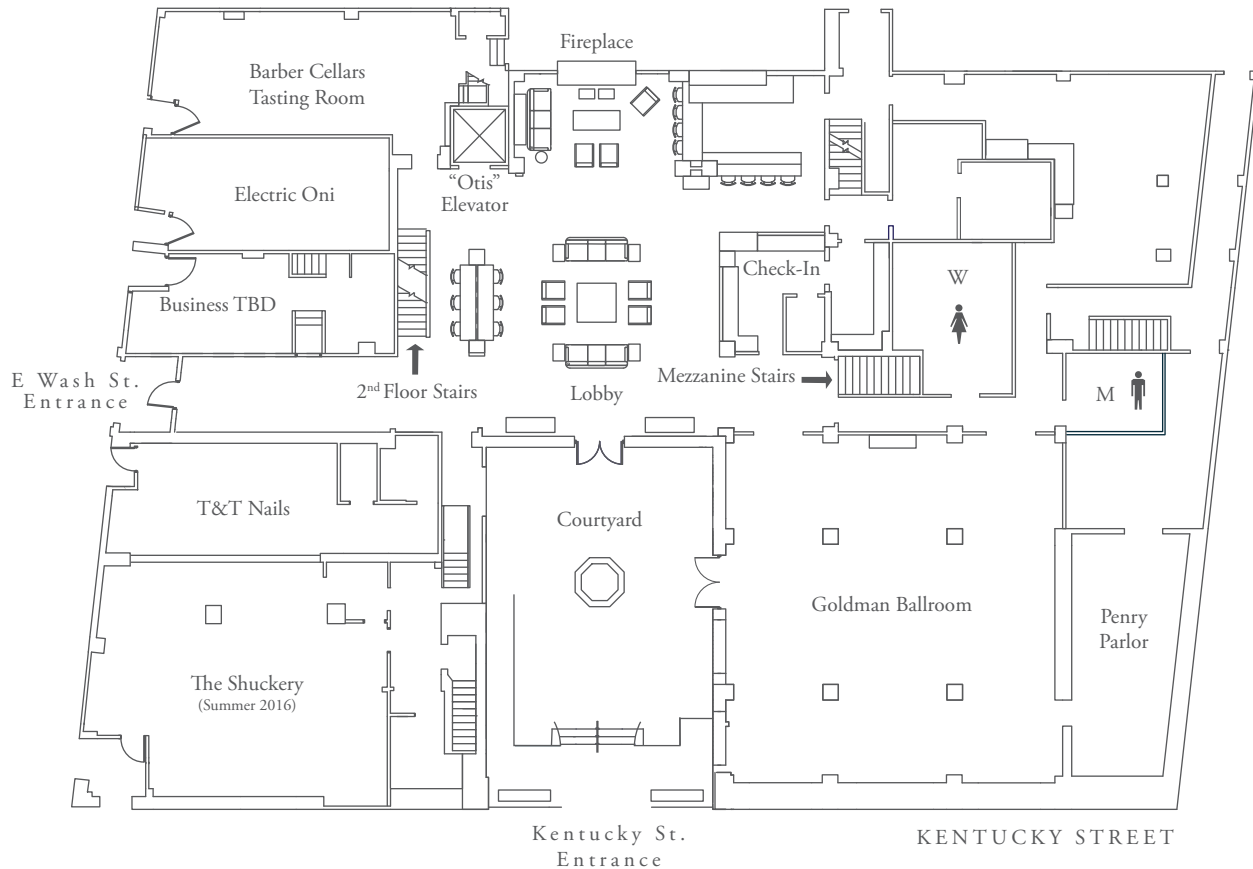
*25 miles to the Pacific Ocean*

*40 miles to San Francisco and the Golden Gate Bridge*



# Floor Plan

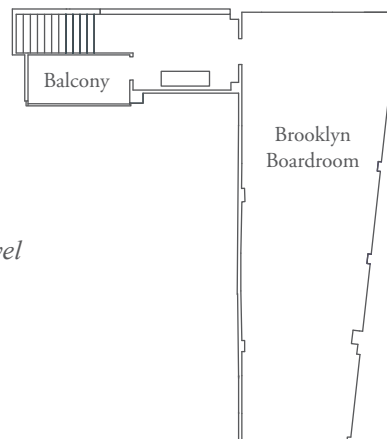
## LOBBY LEVEL - FIRST FLOOR



## BOARDROOM - MEZZANINE LEVEL

*The balcony overlooks the ballroom on the first floor and is included in rentals of the Goldman Ballroom.*

**Note:** The Brooklyn Boardroom is on the mezzanine level and is only accessible by stairs from the first floor.





# Event Space Specifics

*Hotel Petaluma features a beautiful 1900-square-foot ballroom, 950-square-foot boardroom and small meeting room. The Ballroom and Boardroom feature restored hardwood floors and windows with 1920's architectural detail. The hotel lobby features elegant furnishings and a fireplace lounge.*

## GOLDMAN BALLROOM - FIRST FLOOR

Square Footage	Dimensions L'xW'	Ceiling Height	Theater Capacity	Reception Capacity	Banquet Capacity
1900	44'-6" x 43'-2"	15'	140	264	123

## BROOKLYN BOARDROOM - MEZZANINE LEVEL

Square Footage	Dimensions L'xW'	Ceiling Height	Theater Capacity	Reception Capacity	Banquet Capacity
950	55'-3" x 20'-3"	10'	49	49	40

## PENRY PARLOR - FIRST FLOOR

Square Footage	Dimensions L'xW'	Ceiling Height	Theater Capacity	Reception Capacity	Banquet Capacity
360	30'-0" x 11'-6"	6'8"	-	16	16

*Event rentals include room setup, tables and chairs. Custom catering packages are available through our preferred caterer, Out to Lunch Catering. A/V and other event services are not currently provided in-house. However we will gladly assist in the coordination of desired services.*



## *Room Accommodations*

### *AMENITIES*

- *Free wireless internet*
- *Flat-screen televisions*
- *Beds with plush linens & triple sheets*
- *Bath amenities*
- *In-room Keurig coffee makers*
- *Irons & ironing boards*
- *Hairdryers*

*Pet-friendly rooms are available. All rooms at historic Hotel Petaluma are non-smoking.*



# *Getting to Hotel Petaluma*

---

## AIRPORT SHUTTLE

*Hotel Petaluma is easily accessible by airport shuttle and public transportation. Airport Express runs from Oakland, San Francisco and Sonoma County airports. Also Golden Gate Transit from downtown San Francisco.*

*The downtown transportation center is only ½ mile from Hotel Petaluma.*

## PARKING

*Free on-street parking is available. Free parking passes for area lots and garages are also offered. For large groups, please discuss parking arrangements with us in advance.*

## ADDITIONAL TRAVEL

*The Petaluma Municipal Airport is located less than 3 miles from Hotel Petaluma. Perfect for private flights.*

*Taxis are easily available from multiple providers in Petaluma.*

## DIRECTIONS DRIVING FROM

San Francisco      *US-101 N to Exit 472B for CA-116 E toward Sonoma/Napa, right onto CA-116 W/Lakeville St, left onto E Washington St, right onto Kentucky St to Hotel*

Santa Rosa      *US-101 S to Exit 474 E Washington St, right onto E Washington St, right onto Kentucky St to Hotel*

Sacramento      *I-80 W to Exit 33B for CA-137 toward Novato/San Rafael, continue on CA-37 W, right onto Lakeville Hwy, left onto E Washington St, right onto Kentucky St to Hotel*

# *Meeting Packages & Quotes*

*Custom meeting packages also available. Contact us for a quote.*

## *GROUP MEETING PACKAGE*

*Cost is \$65 per person for a full day rental of event space. Room will be set to your specifications. This also includes tables and chairs.*

*(1) Flip chart with easel and markers*

*Continental Breakfast: Bagels, pastries, fresh fruit, juices, coffee and tea.*

*(1) Bottle of water for each attendee*

*Mid-morning or Afternoon Snack Break. Choose from sweet treats or healthy veggies. Beverage refresh.*

*Complimentary Wi-Fi in all public and private spaces*

*Box Lunch with your choice of entree.*

*A/V Cart (Upon Request)*

*Upgrade to a hot lunch for \$3 more per person.*

*Also included is 10% off lowest available room rate online. Package includes 50% off wine tasting at Barber Cellars, located through the lobby of the hotel.*

*Minimum 15 people for the Brookly Boardroom. Minimum 30 people for the Goldman Ballroom. Some restrictions and blackout dates may apply.*

## *QUOTES AND SCHEDULING*

*Colleen Marlow, Sales & Catering Manager: (707)559.3393 or [cmarlow@hotelpetaluma.com](mailto:cmarlow@hotelpetaluma.com)*