



Thank you for considering The Inn at Entrada for your next special occasion!

Located in Southern Utah, nestled near the mouth of Snow Canyon State Park, and only 45 minutes from Zion National Park, The Inn at Entrada is a unique location for your next special occasion or group getaway. For your anniversary party, family reunion, birthday party, wedding, or work retreat, we offer all the amenities to make your stay a success. Luxury accommodations, an on-site restaurant and grill, and a professional service staff are available 24/7.

The Inn offers the following accommodations:

- Studio Casitas
- One Bedroom Suites
- Two Bedroom Suites/ Casitas
- Three Bedroom Casitas
- Four Bedroom Casitas
- 1 Five Bedroom House
- Conference Rooms



The following information will help you start planning your event.

To discuss availability and pricing, please contact

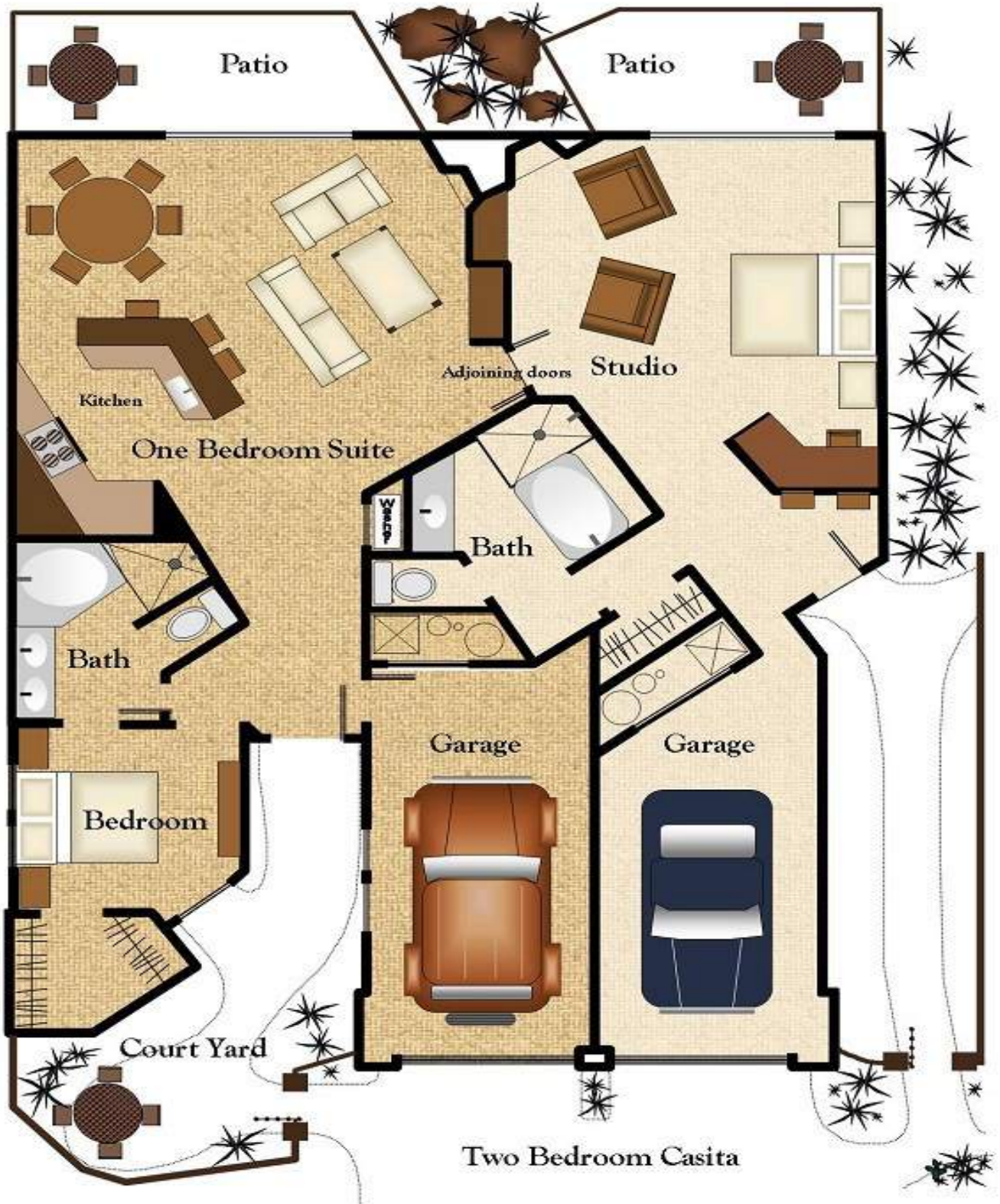
Timothy Mahoney or Karyn Javines

(435) 634-7100

www.innatentrada.com

tbmahoney@troon.com

kjavines@troon.com





Anasazi Four Bedroom



Space & Capacities

Studio Casita: 800 sq. ft.

The one bedroom casita has a kitchenette, coffee maker and coffee, writing desk, wireless internet, a cozy living area with a fireplace, contemporary artwork, cable TV, DVD player, king size bed, full closet, iron and ironing board, whirlpool bath and stonewall shower, hair dryer, Tarocco Spa products, a patio overlooking the serene area, and a garage. This suite comfortably accommodates two people.

One Bedroom Suite: 1200 sq. ft.

The one bedroom suite includes a full kitchen complete with all cooking amenities and dishwasher, coffee maker and coffee, dining area, living area, plush furniture, a pull-out sofa bed, cable TV and DVD players, writing desk, wireless internet, king size bed, walk-in closet, iron and ironing board, fireplaces in both the living area and bedroom, contemporary artwork, a garage, and a patio next to relaxing water features. The bathroom includes Tarocco spa products, double sinks, a whirlpool bath and a large stonewall shower. This suite comfortably accommodates four people.

Two Bedroom Suite: 2000 sq. ft.

The two bedroom suite has a full kitchen complete with all cooking amenities and dishwasher, coffee maker and coffee, dining area, living area, plush furniture, a pull-out sofa bed, cable TV and DVD players, wireless internet, master bedroom with king bed, guest bedroom with queen bed, walk-in closets, iron and ironing board, fireplaces in the living area and bedrooms, contemporary artwork, a garage, and a patio next to relaxing water features. This suite is complete with two bathrooms, Tarocco spa products, hair dryer, as well as a washer and dryer and comfortably accommodates up to six people.

Three Bedroom: 2200 sq. ft.

The three bedroom casita features two living areas, a pull-out sofa bed, cable TV and DVD players, high speed wireless internet, one large kitchen complete with all cooking amenities and dishwasher, a smaller kitchen area, coffee, a dining area, washer and dryer, two king beds, one queen, walk-in closets, iron and ironing boards, three bathrooms, two whirlpool tubs, Tarocco spa products, hair dryers, contemporary artwork, three fireplaces, two garages and two private patios. This luxury casita comfortably accommodates up to eight people.

Anasazi Four Bedroom: 2900 sq. ft.

The Anasazi Suite features four bedrooms and four bathrooms, two living areas, 1 3/4 kitchens, two patios, two garages, and a contemporary southwest design. This one-of-a-kind suite comfortably accommodates 8 people, and a twin-sized rollaway is available upon request during reservation.

Johnny Miller Suite: 4,100 SQ. Feet

The Johnny Miller Residence is an elegant five bedroom, five bathroom masterpiece, loaded with golf memorabilia, and situated on the 9th hole of Entrada golf course. The house will comfortably sleep 10 people

The Johnny Miller house has A full kitchen with Sub-Zero and Wolf appliances, All-Clad cookware, dinnerware, and glassware for 10.

The spacious living room features a vaulted ceiling, designer furnishings, new 65" TVs, integrated Bluetooth sound system and a gas fireplace, as well as access to the spacious deck and built in BBQ, private putting green and sweeping views of Red Mountain and Snow Canyon State Park.

All bedrooms have new 46" TVs and their own bathrooms.

Downstairs recreation area with large leather sectional, 65" TV, pool table and access to a second private patio area

A 10,000 sq. ft. red-rock grotto with waterfall, built-in barbecue, private putting green and hot tub.



Conference Rooms

We offer a wide variety of spaces to accommodate your meeting's needs.

The Inn Welcome Center has 2 rooms available for group use

Board Room:

- 360 sq. ft.
- 18' x 20'
- Comfortably fits 10 people



Conference Room:

- 800 sq. ft.
- 40' x 20'
- Comfortably fits 30 people with space for more
- U-Shape, banquet, classroom, and board seating available



Event Space

Multi-use event space for up to 150 people is also available on-site at the Entrada at Snow Canyon Country Club



Photo By Danny Lee

Food & Beverage

On-Site Dining

Kokopelli Restaurant: The Kokopelli Dining Room, overlooking the Johnny Miller signature golf course located on the upper level of our award winning clubhouse, is sure to astonish anyone who visits, with its panoramic views of red rock cliffs, snow canyon and emerald fairways. The Kokopelli Dining Room offers a elegant dining experience with a exceptional menu. Private dining rooms are available upon request and availability

The Grille at Entrada: Experience the Club's newest gathering place - The Grille at Entrada! Whether it's to watch a game on one of large TVs, have a casual lunch with friends or a refresh yourself with a drink at the bar - there is something for everyone to enjoy!



Looking for a caterer?

Just a little bite cooking company

Jennifer Polanowski Executive chef and Proprietess

jennifer.polanowski@gmail.com

(435) 879-9047

Katering Koncepts

kelly@kateringkoncepts.com

(435) 574-0059

Chef Jessi

jessi@chefjessi.com

(954) 494-1812

Contract: Upon reserving rooms/space, a group contract will be drawn up and emailed or faxed over to the group coordinator to review and sign.

Deposits & Payments: A 20% deposit is due within seven days of the signing of the contract to hold the tentative rooms. If the deposit and signed contract are not received by the deposit due date, all rooms will be canceled. Final payment is due upon departure. Payment is accepted on Visa/Mastercard/American Express/Discover, or by cash or check made payable to The Inn at Entrada. If paying by check, payment must be received in full 14 days prior to the stay or a credit card authorization is needed.

Rooms: The final rooming list will be emailed no later than 72 hours prior to the event. This will ensure that your group is organized properly according to schedule. If specific rooms are not chosen, The Inn at Entrada will assign rooms randomly to guests. They may or may not be next to each other. All itemized room charges must be reviewed and signed at the conclusion of the stay. If guests are not available or choose not to sign, they accept the billing count of The Inn at Entrada.

Damage: Client assumes responsibility for any claims for loss or damage to itself or its belongings during the stay. Client shall also indemnify and hold The Inn at Entrada harmless for any injury to persons or damage to the property except in claims due to the Inn at Entrada's gross negligence. The Inn at Entrada does not accept liability for items left unattended in dining areas, banquet space or on the golf course. Client will also compensate the Inn at Entrada for any damage caused by its group, agents or exhibitors.

Reservation Procedure: Individuals may call for the Inn at Entrada at (435) 634-7100. Individuals must identify themselves as a member of your group at the time of reservation in order to receive the agreed upon group rate and for the reservation to be credited toward fulfillment of your group's contracted room block. Guests may also book via www.innatentrada.com using the group access code. Codes will be given to the group organizer upon signing of this contract. Any reservation requests after the lodging guarantee date will be accepted on a space available basis at rack rate.

If you would prefer not to require individuals to place reservations, please provide a rooming list at least 14 days prior to arrival date. Requests for accommodations not covered by your room block are subject to availability and will be handled on an individual basis. Check-in time is 4:00 pm; checkout time is 11:00 am. We will make every effort to accommodate early arrivals but it is not guaranteed.