



The Most Versatile Spaces in Toronto.

BERKELEY GENERAL INFORMATION PACKAGE

**1871 BERKELEY CHURCH
315 QUEEN STREET EAST
TORONTO, ON M5A 2Y2**

**THE FIELDHOUSE
311 QUEEN STREET EAST
TORONTO, ON M5A 2Y2**

(T) 416.361.9666 (E) INFO@BERKELEYEVENTS.COM

WWW.BERKELEYEVENTS.COM

History, Energy & Inspiration

2 UNIQUE DOWNTOWN VENUES, INNOVATIVE CATERING

For over 12 years, Berkeley Events has hosted some of the grandest private events in Canada. As a heritage landmark building, The '1871' Heritage Berkeley Church inspires long lasting memories. And with its slick interior design and outdoor garden, The Field House evokes an unmatched sense of urban sophistication.

As a full-service event company, Berkeley Events always crafts exceptional events. Our remarkable chefs, memorable staff, and efficient planners comprise what we like to call The Berkeley Experience – always unforgettable, always special.

We're ready to help you entertain, so please contact us for more information or to receive a customized quote.

416-361-9666

info@berkeleyevents.com



The 1871 Berkeley Church

MAIN FLOOR

Features in The Grand Ballroom include the grand heritage wall and 450 sq ft stage opposite the Victorian inspired bar. The 19th century stained glass windows extend from the original hard wood floors to the 60 ft cathedral ceilings.

CAPACITY

220 Seated Rounds · 300 Standing · 300 Theatre Style

THE CIRCA 1871 LOUNGE

With its exposed brick and warm fireplaces, this space lends to many pre-dinner cocktail receptions. It's even the perfect location for a small gathering when larger spaces aren't necessary.

CAPACITY

150 Standing

THE MEZZANINE

From a vantage point above the main floor, the Mezzanine offers your guests the opportunity to survey the action below. With its classic beauty of exposed brick and 17 ft high stained glass windows, this multi- functional area is perfect for a cocktail reception, presentation or full service dinner.

CAPACITY

180 Seated Rounds · 275 Standing · 275 Theatre Style

THE WINE CELLAR

The Wine Cellar is ideal for small private gatherings. In the center of this intimate room is an antique table seating up to 20 guests. This room can be used as an add-on with the Circa Lounge, for small private functions or for break out meetings.

The Field House

THE VENUE

With 18-foot ceilings, exposed beams and walls of antique white, the main space accommodates a sit-down event for up to 150 guests. The west wall is of glass French-doors that open to provide access to the landscaped Garden Deck.

CAPACITY

150 Seated Rounds · 150 Standing · 150 Theatre Style

THE TREE HOUSE

Toronto's premier event venue in a tree, this two-storey tree house accommodates up to 10 guests for full service dining indoors.

CAPACITY

10 Seated indoors or 20 standing on upper and lower deck

THE TADDLE CREEK LODGE

Paying homage to old town Toronto, this outdoor oasis features a stream that is the original waterway from the 1800's. Included with the venue is a 15x40 ft tent extension, set up pavilion style throughout the summer months. It also has sides available for a heated addition.

THE PRIVATE DINING ROOM

This 800 sq ft space is one of The Berkeley's most unique creations. Using some of our most inventive props and designs we've created a warm and inviting environment perfect for small gatherings or as a private getaway during a larger function in the Field House below.

CAPACITY

12 Seated or 20 standing

Venue Rates

BERKELEY CHURCH RATES

REGULAR

\$1800 Monday & Tuesday · \$3100 Wednesday to Friday · \$3800 Saturday · \$3100 Sunday

HALF-DAY

\$1500 Monday to Thursday, 7am-4pm · \$2000 Friday to Sunday, 7am-3pm

FIELD HOUSE RATES

REGULAR May 15th to October 15th

\$1800 Monday & Tuesday \$3100 · Wednesday to Friday \$3800 · Saturday · \$3100 Sunday

HALF-DAY May 15th to October 15th

\$1500 Monday to Thursday, 7am-4pm · \$2000 Friday to Sunday, 7am-3pm

OFF-SEASON October 15th to May 15th

\$1500 Sunday to Friday · \$2200 Saturday

HALF-DAY October 15th to May 15th

October 15th to May 15th · \$800 Monday to Thursday, 7am-4pm \$1200

Friday to Sunday, 7am-3pm

Partners • Floral

Berkeley only works with the best in the industry.

RINGE AND ASSOCIATES

SWEET PEA'S FLORAL STUDIO

Sweet Pea's hand select our flowers from local Ontario growers whenever possible. By purchasing locally grown flowers and plants, we are supporting over 650 greenhouse farmers who employ approximately 10,000 people in the province of Ontario. Clean, simple, elegant designs that emphasis and enhance the natural beauty of flowers and cut greens. Tellie Hunt, Wedding Specialist.

weddings@sweetpeablooms.ca - sweetpeablooms.ca

Entertainment & Photography

IAN LIWANAG

Photography - Making it real is our philosophy. If you love something it becomes easier to work with. With that, we'd like to think, we fall in love with our clients! DJ - It has been over 25 years and the music never stops. Passion is what drives us. You want the best and you're going to get it. Ian Liwanag, Principle. ian@ianliwanag.com - ianliwanag.com

RED ENTERTAINMENT

Red Entertainment is a full service event provider, offering a wide range of exciting entertainment solutions that are client-tailored. Everything thing from high performance audio, lighting, staging, multimedia systems and equipment rentals it's all professionally handled under one roof.

Carl Cole - A/V Specialist - carl@redentertainment.ca - redentertainment.ca

Sideroad Twenty Cellars Wine List

SIDEROAD TWENTY CELLARS

If fabulous wine is part of your upcoming event, we can help. As purveyors of fine Ontario VQA and International wines, we will work with you to select the best wines for your menu and budget plus deliver right to your chosen venue.

Tracey Luel - Director of Sales - tluel@sr20.ca - sideroadtwentycellars.com



WHITE	UNIT PRICE
<i>Unoaked Chardonnay '08 750ml</i>	<i>\$9.75</i>
<i>Palatine Hills Estate Winery Riesling '10</i>	<i>\$12.95</i>
<i>Red Tractor Riesling Gewurztraminer '10</i>	<i>\$12.95</i>
<i>Sauvignon Blanc '10</i>	<i>\$13.75</i>
<i>Riesling Reserve '09</i>	<i>\$13.95</i>
<i>Lailey Estate Vineyard Vidal '10</i>	<i>\$14.00</i>
<i>La Delizia Pinot Grigio '10 Italy</i>	<i>\$14.50</i>
<i>Pinot Grigio '10</i>	<i>\$14.75</i>
<i>Fume Blanc '08</i>	<i>\$14.95</i>
<i>Franschoek Chemin Blanc '10 South Africa</i>	<i>\$15.95</i>
<i>Unoaked Chardonnay '08 1.5L</i>	<i>\$17.80</i>
<i>Reserve Chardonnay</i>	<i>\$19.95</i>
<i>Lailey Estate Winery Chardonnay '08</i>	<i>\$20.00</i>

Sideroad Twenty Cellars Wine List

RED	UNIT PRICE
<i>Niagara Pinot Noir '08</i>	<i>\$9.95</i>
<i>Cabernet Sauvignon '07</i>	<i>\$13.95</i>
<i>Red Tractor Four Acres (SB/R/C/G) '10</i>	<i>\$14.95</i>
<i>Red Tractor Merlot/Cabernet '08</i>	<i>\$14.95</i>
<i>Tall Poppy Select Shiraz '10 Australia</i>	<i>\$15.50</i>
<i>Lailey Estate Vineyard Vidal '10</i>	<i>\$14.00</i>
<i>Properties Reserve Cabernet Sauvignon '07</i>	<i>\$19.00</i>
<i>Creekside Estate Laura's Red '07</i>	<i>\$19.75</i>
<i>Reserve Pinot Noir '07</i>	<i>\$19.95</i>
<i>Stonechurch Reserve Pino Noir '07</i>	<i>\$19.95</i>
<i>Sideroad Twenty Cellars Meritage '08</i>	<i>\$22.95</i>
SPARKLING/ICE WINE	UNIT PRICE
<i>Vidal Select Late Harvest '09 Ice Wine 375ml</i>	<i>\$19.00</i>
<i>Methode Traditionnel Sparkling</i>	<i>\$29.95</i>

Parking Lot Rental • Hotels

PARKING LOT RENTAL

Company: Canada Wide Parking

Location: Berkeley St. and Richmond St.

Contact: George Kiouisis (Area Manager) Tel.: 647-300-8535

Bus.: 416-221-1801

Fax: 314-221-3959

Email: gkiouisis@canadawideparking.com

HOTELS

Renaissance- Roger's Centre

Contact: Stephanie Saagi

Tel.: 416-341-5052

Hilton Garden Inn Toronto City Centre

Contact: Erin Beakhouse

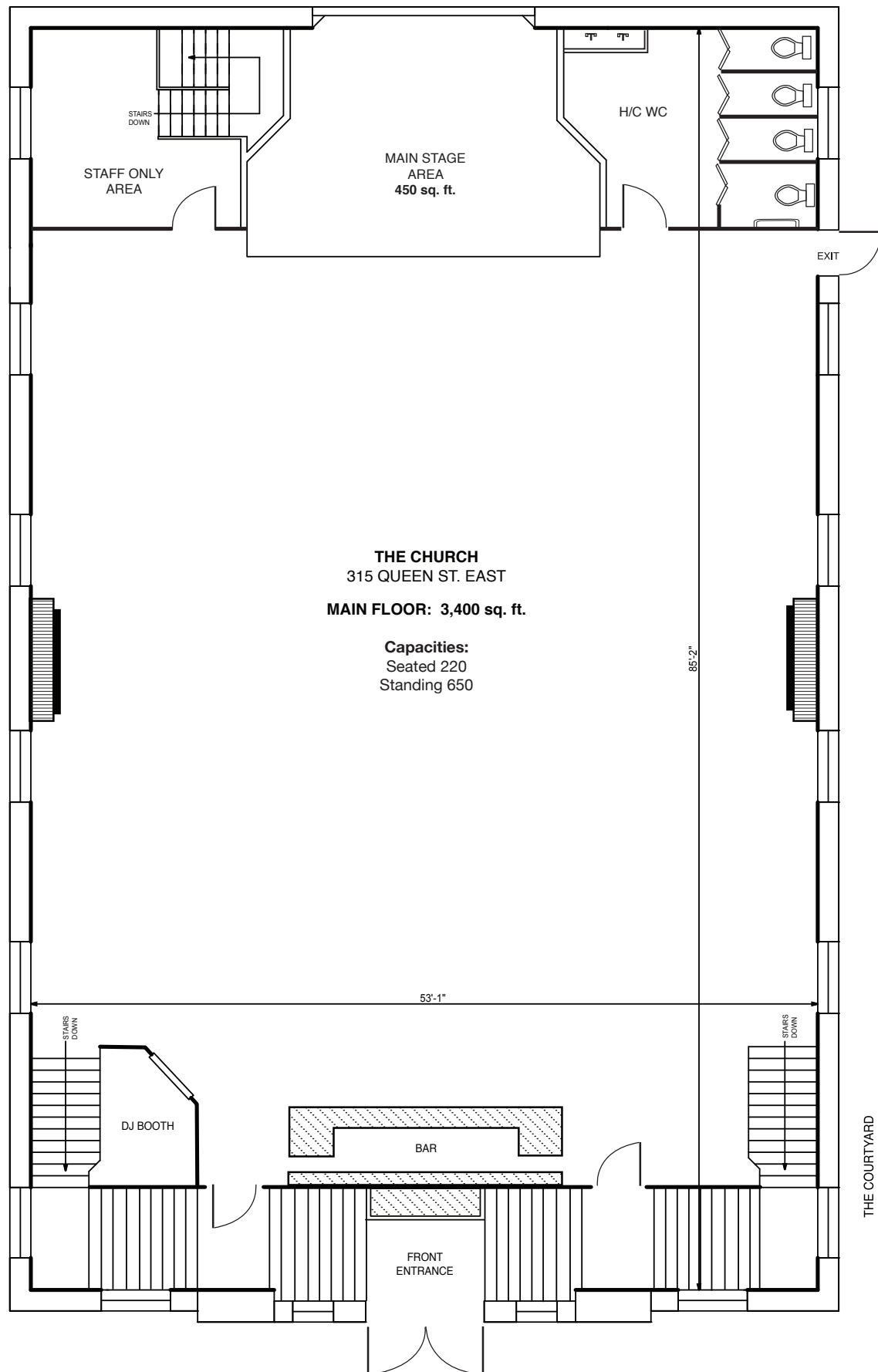
Tel.: 416-362-7700

Hilton Garden Inn Downtown

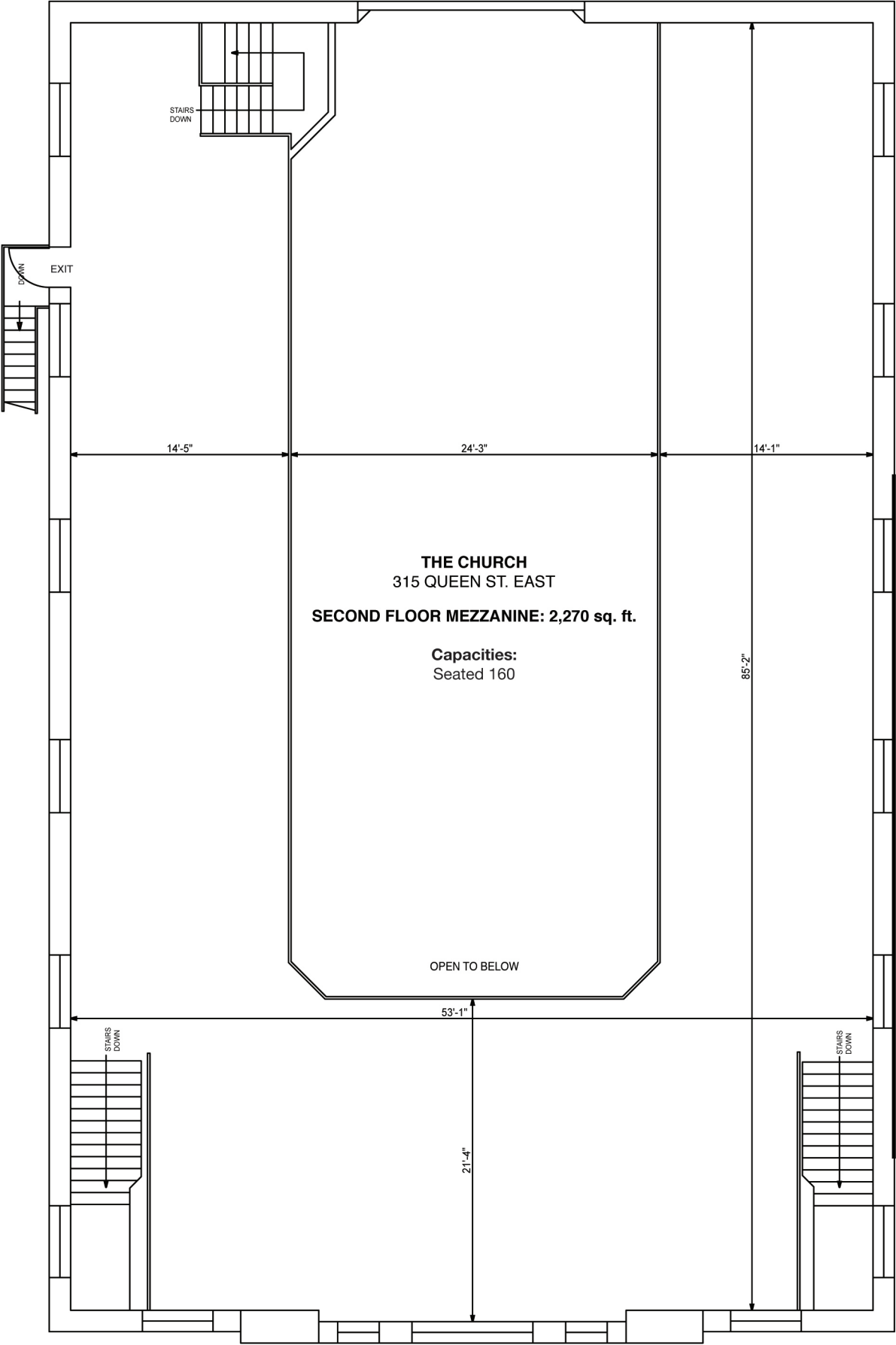
Contact: Crystal Stephenson

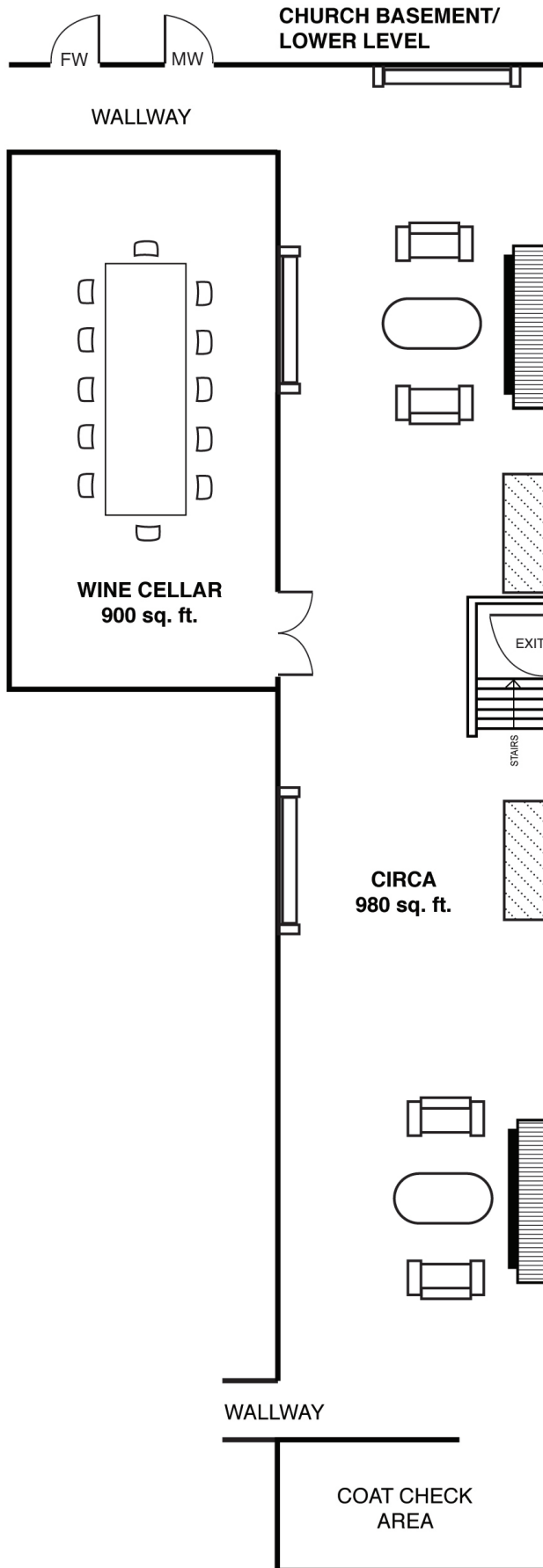
Tel.: 416-593-9200

**FIRST
FLOOR**

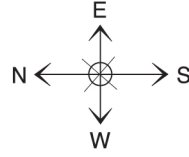
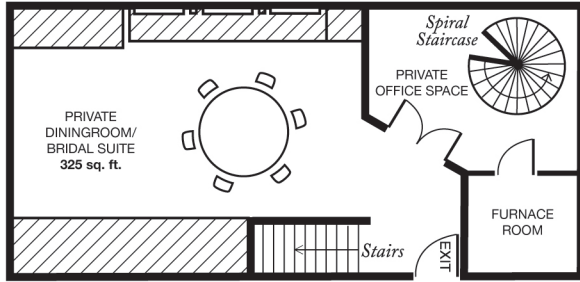


**SECOND FLOOR
MEZZANINE**





SECOND FLOOR



FIRST FLOOR

