

LE
S^TSULPICE
HÔTEL MONTRÉAL



4 Star / 4 Diamond Boutique hotel
Downtown, in the heart of Old-Montreal, 5 min walk from the Convention Center,
and the International Business District
Authentic and inviting atmosphere
108 beautiful and spacious suites
3 event rooms with unique charm
Refined cuisine of Sinclair Restaurant served in the Garden-terrace in season
A wide range of high standard and quality services:
Concierge Clef d'Or, valet / parking service, room service...



Room Jeanne-Mance



Room Le Moyne-LeBer



Room Le Moyne-LeBer



Room Le Royer



SERVICE PLUS

we guarantee an immediate answer

During your meeting, one person is completely dedicated to your requests and needs. Just press the key 'service plus' on your phone, and your call will be answered promptly.



U SHAPE



CLASSROOM
STYLE



THEATER
STYLE



BANQUET



BOARD
MEETING



COCKTAIL

EVENT ROOMS	SQ. FT	U SHAPE	CLASSROOM STYLE	THEATER STYLE	BANQUET	BOARD MEETING	COCKTAIL
<i>Le Moyne-LeBer</i>	1000	36	48	80	64	30	120
<i>Le Royer</i>	550	-	16	30	32	16	40
<i>Jeanne-Mance</i>	320	-	-	-	-	10	-



Salon Le Royer

Superficie / Area

535 pieds carrés (22,3 pi x 24 pi)
535 square feet (22,3 ft. x 24 ft.)

Location

Centre d'affaires 2^e étage
Business Center 2nd floor

Style

École / Classroom 22 places
Théâtre / Theater 40 places
Banquet / Banquet 30 places

Conférence /
Conference 16 places

Table ronde: 60 po

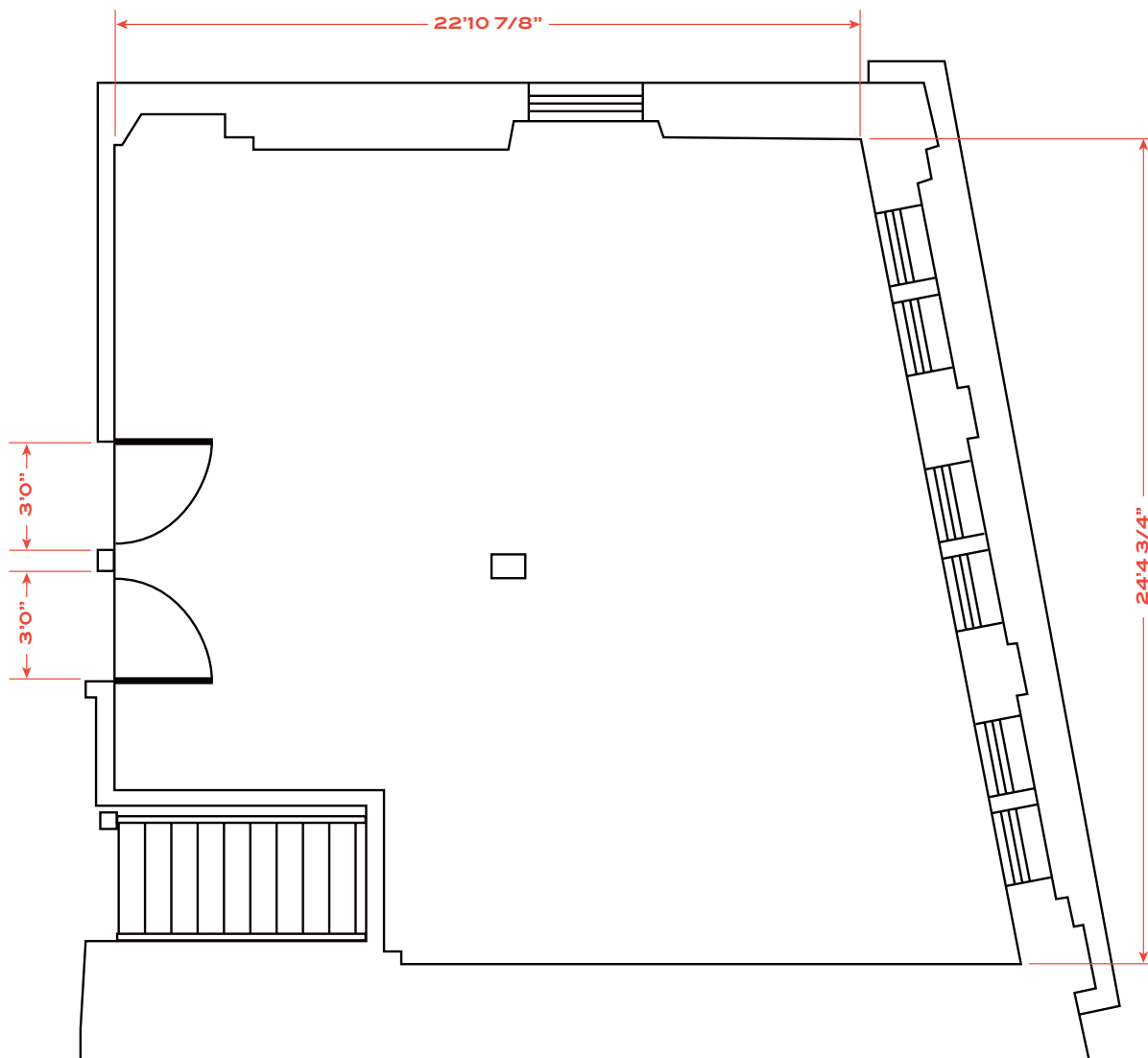
Round table: 60 in

Table rectangulaire:

6 pi x 30 po *ou* 6 pi x 18 po

Rectangular table:

6 ft. x 30 in. *or* 6 ft. x 18 in.





Salon Le Moyne et Leber

Superficie / Area

935 pieds carrés (46 pi x 20,5 pi)
935 square feet (46 ft. x 20,5 ft.)

Location

Rez-de-chaussée
Ground floor

Style

École / Classroom	58 places
Théâtre / Theater	80 places
Banquet / Banquet	80 places
En U / U setup	36 places
Conférence /	
Conference	28 places

Table ronde: 60 po

Round table: 60 in

Table rectangulaire:

6 pi x 30 po ou 6 pi x 18 po

Rectangular table:

6 ft. x 30 in. or 6 ft. x 18 in.

Note: Mur amovible / Air wall

