

events by Marriott



breakfast



breaks



lunch



reception



dinner



beverage

healthy

info

crafted for you

WASHINGTON MARRIOTT WARDMAN PARK HOTEL

2660 Woodley Road NW | Washington | DC 20008

www.wardmanpark.com

WASHINGTON MARRIOTT WARDMAN PARK HOTEL

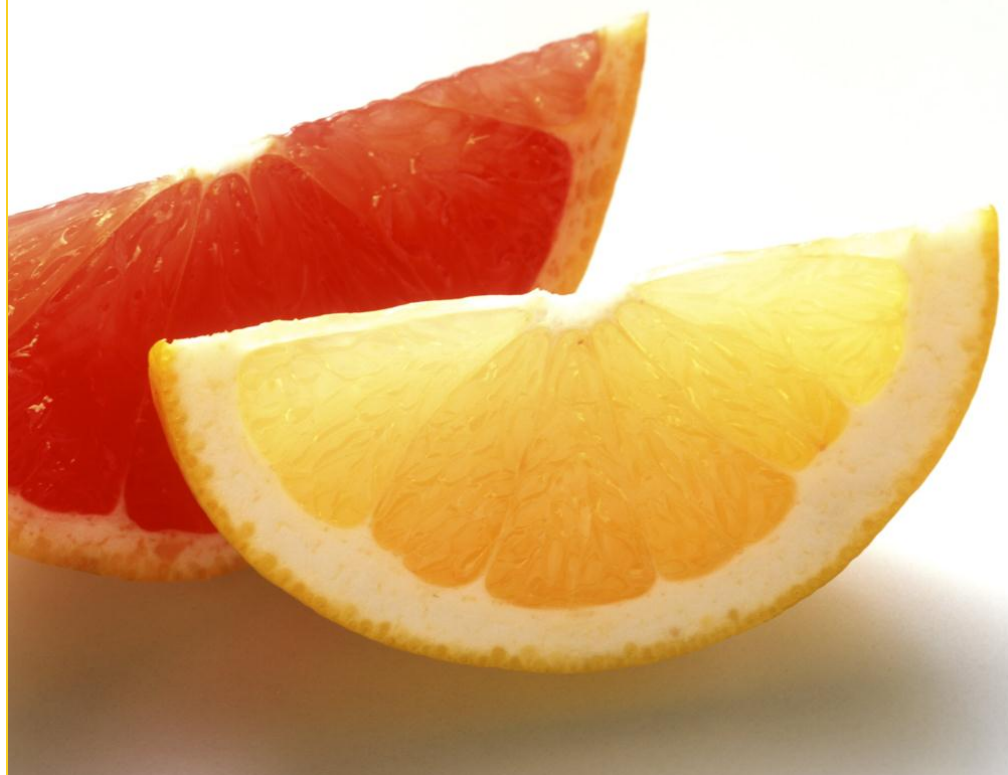
2660 Woodley Road NW | Washington | DC 20008

202.328.2000 | www.wardmanpark.com

events

 by Marriott

breakfast

[breakfast](#)[breaks](#)[lunch](#)[reception](#)[dinner](#)[beverage](#)[healthy](#)[info](#)[> plated](#) [> buffet](#)

SEASON

[cereals](#)[juices](#)[coffee](#)[teas](#)[pastries](#)[milk](#)[yogurt](#)[eggs](#)

WASHINGTON MARRIOTT WARDMAN PARK HOTEL

2660 Woodley Road NW | Washington | DC 20008

202.328.2000 | www.wardmanpark.com

events by Marriott

BREAKFAST

breaks

lunch

reception

dinner

beverage

healthy

info

> plated > buffet

continental breakfast | for 1 hour service

basic | \$31

orange & cranberry juices
seasonal fruits & berries
freshly baked breakfast bakeries
assorted bagels with condiments
coffee & tea service

deluxe | \$36

orange & cranberry juices
seasonal fruits & berries
freshly baked breakfast bakeries
assorted bagels with condiments
hot oatmeal, healthy toppings
house made granola
assorted fruit & plain yogurts
coffee & tea service

enhancements | \$5

assorted doughnuts
organic whole wheat muffins
warm cinnamon sticky buns
coffee cakes
assorted cold cereals
miniature egg frittatas

enhancements | \$6

ham, egg & cheese sandwiches
sausage, egg & cheese sandwiches
breakfast burritos
smoked fish display
capers, diced onions, chopped egg
sliced meats & artisan cheese display
yogurt & granola parfait
baked apples, granola topping



WASHINGTON MARRIOTT WARDMAN PARK HOTEL

2660 Woodley Road NW | Washington | DC 20008

202.328.2000 | www.wardmanpark.com

events by Marriott

BREAKFAST

breaks

lunch

reception

dinner

beverage

healthy

info

[> plated](#) [> buffet](#)

breakfast

breakfast includes

orange juice

freshly baked breakfast bakeries

coffee & tea service

choice of potato

hash browns

home fries with onions & chives

enhancements | \$ 6

fresh fruit & honey yogurt parfait

yogurt & granola parfait

fresh fruit & berry martini

pomegranate coulis

citrus cocktail martini

plated 1 | \$37

scrambled eggs

mascarpone cheese & sautéed peppers

bacon and sausage

plated 2 | \$36

challah french toast

bacon and sausage

plated 3 | \$37

egg frittata

fontina cheese, pancetta

sautéed mushrooms

plated 4 | \$38*

egg timbale with spinach

english muffin, canadian bacon

hollandaise sauce



***maximum of 500 guests**

WASHINGTON MARRIOTT WARDMAN PARK HOTEL

2660 Woodley Road NW | Washington | DC 20008

202.328.2000 | www.wardmanpark.com

events by Marriott

BREAKFAST

breaks

lunch

reception

dinner

beverage

healthy

info

> plated > buffet

breakfast buffet | for 1 hour service



buffet | \$42

orange, cranberry, & tomato juices
seasonal fruits & berries
freshly baked breakfast bakeries
assorted bagels with condiments
cold cereals
served with whole, low fat, skim milk
individual fruit yogurts
with granola topping
scrambled eggs
bacon & sausage
home fries with onions & chives
coffee & tea service

enhancements | \$4

assorted fruit shooters

enhancements | \$6

belgian waffles
maple & fruit syrup
challah french toast
maple & fruit syrup
cheese blintzes, fruit sauce
baked apple with granola

enhancements | \$12

omelet station* (50)
person minimum, made to order

diced ham, cheese, mushrooms, peppers,
tomatoes, spinach, asparagus, spring
onions, bacon and chives

pancake station*

(50) person minimum, made to order

chocolate, plain & blueberry pancakes
raspberry jam, maple & fruit syrup
whipped butter

***one attendant per (50) guests required, \$200 per attendant fee will apply**

**** A \$150 fee will apply for any breakfast buffets under the 25 guests**

WASHINGTON MARRIOTT WARDMAN PARK HOTEL

2660 Woodley Road NW | Washington | DC 20008

202.328.2000 | www.wardmanpark.com

events by Marriott

breaks

[breakfast](#)[BREAKS](#)[lunch](#)[reception](#)[dinner](#)[beverage](#)[healthy](#)[info](#)

DELIGHT

muffins

juices

nuts

popcorn

pretzels

cakes

soda

WASHINGTON MARRIOTT WARDMAN PARK HOTEL

2660 Woodley Road NW | Washington | DC 20008

202.328.2000 | www.wardmanpark.com

events by Marriott

[breakfast](#)[BREAKS](#)[lunch](#)[reception](#)[dinner](#)[beverage](#)[healthy](#)[info](#)[> am – morning](#)[> pm - afternoon](#)

enhancements | \$6

granola & nutra-grain bars

asiago & prosciutto quiche

individual fruit yogurts, granola topping

am breaks | for 1 hour service

mid morning 1 | \$17

assorted soft drinks & bottled waters

coffee & tea service

mid morning 2 | \$21

whole fruit

assorted mini muffins

mid morning 3 | \$25

apple fritters

toasted almonds in cones

flaky apple strips

warm apple & allspice empanadas

apple coffee cake, cinnamon sauce

warm apple cider with cinnamon sticks

all breaks include assorted soft drinks, bottled waters, coffee and tea service

A customary 22% taxable service charge and 10% sales tax will be added to all food & beverage prices.
Prices are per person unless otherwise indicated. All prices subject to change with market fluctuations. (A/M)

[home](#) [<](#) [>](#)

WASHINGTON MARRIOTT WARDMAN PARK HOTEL

2660 Woodley Road NW | Washington | DC 20008

202.328.2000 | www.wardmanpark.com

events by Marriott

breakfast

BREAKS

lunch

reception

dinner

beverage

healthy

info

> am – morning

> pm - afternoon

pm breaks | for 1 hour service

mid afternoon 1 | \$20

freshly baked cookies with milk
assorted gourmet brownies

mid afternoon 2 | \$25

individual crudités
romaine leaf with caesar dressing
celery sticks with peanut butter
apple slices with caramel sauce
house made flatbreads
with olive tapenade, hummus
and sun-dried tomato spreads

mid afternoon 3 | \$22

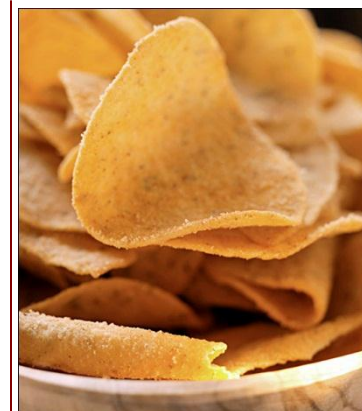
assorted ice cream bars
frozen fruit bars

mid afternoon 4 | \$24

miniature hot dogs with condiments
tortilla chips con queso
warm bavarian pretzels
beer cheese sauce, gourmet mustards
cracker jacks, popcorn, candy bars

enhancements | \$6

artisan cheese display
fresh fruit smoothie station*
rice krispie treats
battered onion rings, chipotle aioli
mini corn dogs, gourmet mustards
individual trail mix shooters



all breaks include assorted soft drinks, bottled waters, coffee and tea service

A customary 22% taxable service charge and 10% sales tax will be added to all food & beverage prices.
Prices are per person unless otherwise indicated. All prices subject to change with market fluctuations. (A/M)

home < >

WASHINGTON MARRIOTT WARDMAN PARK HOTEL

2660 Woodley Road NW | Washington | DC 20008

202.328.2000 | www.wardmanpark.com

events by Marriott

breakfast

BREAKS

lunch

reception

dinner

beverage

healthy

info

> am – morning

> pm - afternoon

pm breaks | for 1 hour service

mid afternoon 5 | \$23

chips & dips

wild mushroom, sundried tomatoes,
artichokes & tapenade

pita, bagel, focaccia & potato chips

assorted fruit shooters

pineapple lollipops

assorted nuts

mid afternoon 6 | \$25

chef crafted granola bars

individual trail mix shooters

truffle white bean hummus

chickpea fritters, tikka yogurt

propel fitness ® vitamin waters

naked juices ®

mid afternoon 7 | \$22 glass candy jars |

jelly bellies ®, swedish fish ®

reese's pieces ®, skittles ®

chocolate candy bars

assorted nuts

dried fruits

enhancements | \$10

spinach & cheese dip

artichoke & crab dip

corn chips, tortilla & bagel chips

assortment of mini cupcakes

cookies & cream, red velvet,

lemon strawberry

belgian dark chocolate

strawberries with chantilly cream

balsamic syrup

assorted nuts & dried fruits shooters



all pm breaks include: assorted soft drinks, bottled waters, coffee and tea service

A customary 22% taxable service charge and 10% sales tax will be added to all food & beverage prices.
Prices are per person unless otherwise indicated. All prices subject to change with market fluctuations. (A/M)

home < >

WASHINGTON MARRIOTT WARDMAN PARK HOTEL

2660 Woodley Road NW | Washington | DC 20008

202.328.2000 | www.wardmanpark.com

events by Marriott

breakfast

BREAKS

lunch

reception

dinner

beverage

healthy

info

> am – morning > pm - afternoon

a la carte coffee breaks

am breaks

coffee and tea service

\$90 per gallon

orange juice

\$94 per gallon

lipton® iced teas, fruit & vegetable juice

\$7 per bottle

pepsi® soft drinks

\$5.50 per can

bottled water

\$5.50 per bottle

pellegrino® water

\$6 per bottle

propel fitness® vitamin water

\$7 per bottle

naked juices®

\$7 per bottle

sports drinks & red bull®

\$7 per bottle

individual yogurt smoothies

\$7 per bottle

freshly baked breakfast bakeries

\$60 per dozen

assorted bagels with condiments

\$60 per dozen

warm cinnamon sticky buns

\$64 per dozen

granola nutra-grain & low carb bars

\$6 each



WASHINGTON MARRIOTT WARDMAN PARK HOTEL

2660 Woodley Road NW | Washington | DC 20008

202.328.2000 | www.wardmanpark.com

events by Marriott

breakfast

BREAKS

lunch

reception

dinner

beverage

healthy

info

> am – morning > pm - afternoon

a la carte coffee breaks

pm breaks

individual bags of potato chips, popcorn and pretzels	\$ 6 per bag
assorted full sized candy bars	\$ 5 each
individual fruit yogurts with granola	\$ 6 each
ice cream & frozen fruit bars	\$ 7 each
whole fresh fruit	\$ 4.50 p/ piece
seasonal fresh cut fruits	\$12 per person
tea cookies and biscotti selection	\$60 per dozen
freshly baked cookies or gourmet brownies	\$60 per dozen
warm bavarian pretzels	
beer cheese sauce, gourmet mustards	\$64 per dozen
miniature pastries	\$64 per dozen
tea sandwiches	\$64 per dozen
potato chips, pretzels, tortilla chips or bagel chips	\$26 per pound
peanuts or bar mix	\$26 per pound
trail mix, mixed nuts or wasabi peas	\$32 per pound
spinach & cheese dip or artichoke & crabmeat dip	\$54 per quart
jalapeno cheese dip, guacamole or hummus	\$49 per quart
salsa, bleu cheese or onion dip	\$29 per quart



WASHINGTON MARRIOTT WARDMAN PARK HOTEL

2660 Woodley Road NW | Washington | DC 20008

202.328.2000 | www.wardmanpark.com

events by Marriott

lunch

[breakfast](#)[breaks](#)[LUNCH](#)[reception](#)[dinner](#)[beverage](#)[healthy](#)[info](#)[> plated](#) [> buffet](#)

ESSENCE

[salads](#)[chicken](#)[fish](#)[beef](#)[pasta](#)[desserts](#)[beverages](#)[sandwiches](#)

WASHINGTON MARRIOTT WARDMAN PARK HOTEL

2660 Woodley Road NW | Washington | DC 20008

202.328.2000 | www.wardmanpark.com

events by Marriott

breakfast

breaks

LUNCH

reception

dinner

beverage

healthy

info

> plated > buffet

plated lunch

plated lunches include salad, bread service, seasonal vegetables, chef's choice of starch, dessert and coffee service



salad selections

seasonal mixed greens

mediterranean salad

caesar salad

baby spinach

dessert selections

chocolate hazelnut tart

raspberry lemon roulade

chocolate mocha mousse

cappuccino glaze

new york cheesecake with chantilly
cream & caramel sauce

apple strudel

chocolate layer torte

carrot cake with cream cheese icing
and caramel sauce

tres leches cake with meringue and
fresh berries

lunch plated #1 | \$51

chicken milanese
white balsamic and pesto sauce

lunch plated #2 | \$51

pan seared chicken breast
roasted tomato basil sauce

lunch plated #3 | \$56

sautéed maryland crab cake
lemon buerre blanc

lunch plated #4 | \$50

grilled salmon
ginger soy glaze

lunch plated #5 | \$57

grilled new york filet
port wine sauce

lunch plated #6 | \$49

grilled free range chicken breast
served over penne pasta
sun dried tomato & scallion cream sauce

WASHINGTON MARRIOTT WARDMAN PARK HOTEL

2660 Woodley Road NW | Washington | DC 20008

202.328.2000 | www.wardmanpark.com

events by Marriott

[breakfast](#)

[breaks](#)

[LUNCH](#)

[reception](#)

[dinner](#)

[beverage](#)

[healthy](#)

[info](#)

[> plated](#) [> buffet](#)

plated lunch

plated lunches include salad, bread service, seasonal vegetables, chef's choice of starch, dessert and coffee service



vegetarian entrée options

wild mushroom ravioli

grilled vegetables roasted
red pepper sauce

tofu with stir fried vegetables

hoisin sauce

grilled eggplant

julienned vegetable bundle
chick peas and lentils

vegetable strudel

sautéed vegetables
wrapped in puff pastry lentils
polenta, black olives
tomato basil coulis

couscous, braised vegetables

roasted seasonal squash

napoleon of grilled vegetables

roasted potatoes, chick peas
wild mushroom ragout

WASHINGTON MARRIOTT WARDMAN PARK HOTEL

2660 Woodley Road NW | Washington | DC 20008

202.328.2000 | www.wardmanpark.com

events by Marriott

[breakfast](#)[breaks](#)[LUNCH](#)[reception](#)[dinner](#)[beverage](#)[healthy](#)[info](#)[> plated](#) [> buffet](#)

plated chilled lunch

chilled lunches include choice of soup du jour or fruit plate bread service, dessert and coffee service



chilled lunch plate #1 | \$46

grilled basil pesto chicken caesar salad
hearts of romaine
shaved parmigiano cheese
garlic and herb crustini
caesar dressing

chilled lunch plate #2 | \$50

seared tuna niçoise
potato, onions, haricot vert, olives and tomato
red wine vinaigrette

chilled lunch plate #3 | \$52

grilled chicken breast, mango salsa
herb crusted sliced beef tenderloin, horseradish aioli
potato salad, frisée

enhancements | \$ 5.50

assorted soft drinks

WASHINGTON MARRIOTT WARDMAN PARK HOTEL

2660 Woodley Road NW | Washington | DC 20008

202.328.2000 | www.wardmanpark.com

events by Marriott

[breakfast](#)[breaks](#)[LUNCH](#)[reception](#)[dinner](#)[beverage](#)[healthy](#)[info](#)[> plated](#) [> buffet](#)

plated chilled lunch

chilled lunches include choice of soup du jour or fruit plate bread service, dessert and coffee service



chilled lunch plate #4 | \$47

deconstructed cobb salad

local greens, egg, bacon, avocado, tomato

grilled chicken

buttermilk ranch dressing

chilled lunch plate #5 | \$50

asian chicken salad

poached fresh chicken

onions, shitake mushrooms, carrots & spinach

soba noodles sesame soy dressing

chilled house made spring roll*

enhancements | \$ 5.50

assorted soft drinks

***500 person maximum for house made spring rolls**

WASHINGTON MARRIOTT WARDMAN PARK HOTEL

2660 Woodley Road NW | Washington | DC 20008

202.328.2000 | www.wardmanpark.com

events by Marriott

breakfast

breaks

LUNCH

reception

dinner

beverage

healthy

info

> plated > buffet

lunch buffet | for 1 hour service

all buffet lunch include coffee service

buffet 1 | \$60

wonton soup

vegetable spring roll

sweet chili dipping sauce

fruit salad with mandarin oranges lychee
and nuts

tofu and vegetable salad
sesame soy dressing

asian noodle salad

orange chicken

steamed salmon with ginger

mongolian beef

broccoli with ginger, garlic
shao hsing rice wine

steamed basmati rice

asian fruit flan

coconut panna cotta

mango basil gelee

buffet 2 | \$58

selection of artisan cheeses

roasted vegetable salad

roasted corn salad

potato salad

shrimp salad

chilled pepper crusted tenderloin of beef

pesto marinated chilled chicken breast

sliced smoked turkey breast

apricot almond tart

lemon pistachio cream cake

enhancements | \$ 5.50

assorted soft drinks

add an additional entrée



50 person minimum for all lunch buffets

A customary 22% taxable service charge and 10% sales tax will be added to all food & beverage prices.
Prices are per person unless otherwise indicated. All prices subject to change with market fluctuations. (A/M)

[home](#) < >

WASHINGTON MARRIOTT WARDMAN PARK HOTEL

2660 Woodley Road NW | Washington | DC 20008

202.328.2000 | www.wardmanpark.com

events by Marriott

breakfast

breaks

LUNCH

reception

dinner

beverage

healthy

info

> plated > buffet

lunch buffet | for 1 hour service

all buffet lunch include coffee service

buffet 3 | \$54

tossed salad

cole slaw

tomato cucumber salad

smoked sliced bbq brisket of beef

mesquite grilled chicken

cheddar cheese biscuits and corn muffins

macaroni and cheese

green bean casserole with sautéed kale

lemon meringue pie

peach cobbler

enhancements | \$ 5.50

assorted soft drinks

add an additional entrée



50 person minimum for lunch buffets

A customary 22% taxable service charge and 10% sales tax will be added to all food & beverage prices. Prices are per person unless otherwise indicated. All prices subject to change with market fluctuations. (A/M)

[home](#) < >

WASHINGTON MARRIOTT WARDMAN PARK HOTEL

2660 Woodley Road NW | Washington | DC 20008

202.328.2000 | www.wardmanpark.com

events by Marriott

breakfast

breaks

LUNCH

reception

dinner

beverage

healthy

info

> plated > buffet

lunch buffet | for 1 hour service

all buffet lunch include coffee service

buffet 4 | \$60

caesar salad

fresh buffalo mozzarella & plum tomato

assorted bean salad

chicken marsala

mushrooms and caramelized shallots

roasted garlic and spinach tortellini

tossed with olives, artichokes,
crushed tomatoes and herbs

haddock piccata

lemon caper sauce

oven roasted seasonal vegetables

focaccia and olive bread

cannoli

tiramisu

biscotti

buffet 5 | \$54

soup du jour

local field greens

tuna salad

potato salad

individual bag of chips

boar's head® deli meats I

country ham

roasted turkey breast

roast beef

grilled chicken

cheeses I

wisconsin swiss

canadian cheddar

tomatoes, lettuce, onions, pickles
and olives

chocolate mousse strip

baked fruit cheesecake



50 person minimum for lunch buffets

A customary 22% taxable service charge and 10% sales tax will be added to all food & beverage prices. Prices are per person unless otherwise indicated. All prices subject to change with market fluctuations. (A/M)

home < >

WASHINGTON MARRIOTT WARDMAN PARK HOTEL

2660 Woodley Road NW | Washington | DC 20008

202.328.2000 | www.wardmanpark.com

events by Marriott

breakfast

breaks

LUNCH

reception

dinner

beverage

healthy

info

> plated > buffet

lunch buffet | for 1 hour service

all buffet lunch include coffee and tea service



buffet 6 | \$55*

salad garden greens | choose 2

romaine lettuce
mixed greens
baby arugla

dressings | choose 2

caesar
sesame soy vinaigrette
raspberry vinaigrette
pepper cream
italian herb vinaigrette

topping | choose 2

caesar: shaved asiago-parmesan and croutons

asian: shaved carrot, peanuts and cellophane noodles

fall: walnuts, gorgonzola cheese and mandarin oranges

greek: vine tomatoes, crumbled feta cheese and kalamata olives

traditional: grape tomatoes, red onions and cucumbers

panini sandwiches | choose 3*

pepper jack & grilled roma tomato rustic sourdough bread

prosciutto ham, pepperoncini, provolone ciabatta bread

portobello, mozzarella, caramelized red onions focaccia bread

roasted turkey breast, bacon, sharp cheddar multi whole grain bread

cuban pork & ham, black bean relish ciabatta bread

philly steak, grilled onion, peppers, provolone soft bolillo bun

dessert |

black & white cookies

apple & cinnamon streusel

50 person minimum for lunch buffets
***maximum of 500 guests**

enhancements | \$ 5

soup station | choose 1

chicken noodle
roasted tomato
baked potato
broccoli and cheese

house made chips

additional panini | \$ 6

WASHINGTON MARRIOTT WARDMAN PARK HOTEL

2660 Woodley Road NW | Washington | DC 20008

202.328.2000 | www.wardmanpark.com

events by Marriott

[breakfast](#)[breaks](#)[LUNCH](#)[reception](#)[dinner](#)[beverage](#)[healthy](#)[info](#)[> plated](#) [> buffet](#)

lunch buffet | for 1 hour service

all buffet lunch include coffee and tea service



buffet 7 | \$55

chicken tortilla soup

mixed field greens, jicama, queso fresco
cilantro vinaigrette

santa fe salad
avocado ranch dressing

blackened shrimp & hominy salad
honey-lime vinaigrette

build your own fajita

flour & corn tortillas
grilled beef & chicken
refried beans, roasted corn, spanish rice
pico de gallo, jalapenos
shredded jack & cheddar cheese
guacamole, sour cream

churros
coconut panna-cotta
key lime pie

50 person minimum for lunch buffets

A customary 22% taxable service charge and 10% sales tax will be added to all food & beverage prices.
Prices are per person unless otherwise indicated. All prices subject to change with market fluctuations. (A/M)

[home](#) [<](#) [>](#)

WASHINGTON MARRIOTT WARDMAN PARK HOTEL

2660 Woodley Road NW | Washington | DC 20008

202.328.2000 | www.marriott.com

events

by Marriott

reception

[breakfast](#)[breaks](#)[lunch](#)[RECEPTION](#)[dinner](#)[beverage](#)[healthy](#)[info](#)

[>hors d'oeuvre](#) [> display](#) [> station](#)

ESSENCE

canapés

shrimp

wraps

sushi

bruschetta

tenderloin

oysters

cheese

WASHINGTON MARRIOTT WARDMAN PARK HOTEL

2660 Woodley Road NW | Washington | DC 20008

202.328.2000 | www.wardmanpark.com

events by Marriott

breakfast

breaks

lunch

RECEPTION

dinner

beverage

healthy

info

>hors d'oeuvre > display > station



cold hors d'oeuvres selections | \$ 6.50 each**

brie and raspberry
tuna napoleon, seaweed & cucumber wasabi
avocado california roll
boursin cheese stuffed dates
bruschetta, wisconsin goat cheese
filo cup with spicy cajun chicken salad
hoisin duck in crisp wonton cup
asparagus & prosciutto cigars

cold hors d'oeuvres selections | \$ 7 each**

portobello mushroom with smoked mozzarella
beef mignonette, horseradish aioli drizzle
smoked salmon, dill & caviar
lobster tarragon salad on artichoke button
allo ghobi-peas, potatoes & cauliflower
sesame hoisin shrimp & pea pod roll
chicken curry cups
tomato & blue crab salad spoon
shrimp salad cone

****fifty (50) piece minimum per hors d'oeuvres selection**

WASHINGTON MARRIOTT WARDMAN PARK HOTEL

2660 Woodley Road NW | Washington | DC 20008

202.328.2000 | www.wardmanpark.com

events by Marriott

breakfast

breaks

lunch

RECEPTION

dinner

beverage

healthy

info

[>hors d'oeuvre](#) [> display](#) [> station](#)

hot hors d'oeuvres selections | \$ 6.50 each**

dijon chicken in puff pastry*

chicken quesadilla*

chicken tikka masala satay

steamed chicken dumpling, soy ginger sauce

peking duck spring roll, hoisin sauce*

sesame chicken, sweet chili sauce*

turkey wrapped in applewood smoked bacon*

beef samosa, cilantro chutney*

beef sheppard's pie*

tenderloin of beef teriyaki skewer

grilled lamb meatballs, spicy tomato sauce

moroccan lamb kabob, figs & apricots

spinach & feta cheese wrapped in phyllo*

roasted root vegetable kabob

crispy asparagus with asiago cheese*

vegetable samosa, cilantro chutney*

edamame dumpling, soy ginger sauce

vegetarian spring roll, sweet chili*



hot hors d'oeuvres selections | \$ 7 each **

lollipop lamb chop

sirloin steak with gorgonzola*

miniature beef wellington strudel, tarragon dip*

asian short rib tart *

cozi shrimp*

lobster empanada*

seafood cobbler*

miniature maryland crab cake*

scallop & ginger filo star*

risotto gorgonzola fritter*

***items suitable for passing, **fifty (50) piece minimum per hot hors d'oeuvres selection**

A customary 22% taxable service charge and 10% sales tax will be added to all food & beverage prices.
Prices are per person unless otherwise indicated. All prices subject to change with market fluctuations. (A/M)

[home](#) [<](#) [>](#)

WASHINGTON MARRIOTT WARDMAN PARK HOTEL

2660 Woodley Road NW | Washington | DC 20008

202.328.2000 | www.wardmanpark.com

events by Marriott

breakfast

breaks

lunch

RECEPTION

dinner

beverage

healthy

info

[>hors d'oeuvre](#) [> display](#) [> station](#)

displays | for 1 hour service

artisan cheeses | \$15 per person

assorted cheeses, sliced french baguettes & assorted crackers

fresh vegetable crudités | \$12 per person

seasonal fresh display of vegetables, artichoke dip & cucumber feta salsa

seasonal fruits and berries | \$14 per person

sliced fresh fruit & seasonal berries, vanilla yogurt sauce & berry coulis

bruschetta | \$16 per person

garlic bread, minted zucchini, wild mushrooms with goat cheese & boursin
chopped tomatoes with garlic, basil & balsamic vinegar

dip medley | \$12 per person

warm chesapeake crab dip and roasted beet & goat cheese dip
sliced french baguettes, lime tortilla chips & pita chips

sliced tenderloin of beef | \$500 per display (serves 25)

dijon mustard & horseradish cream, sliced french bread

smoked "fish" station | \$550 per display (serves 50)

smoked fish selections to include salmon
dill aioli, chopped onions, chopped eggs, capers
party rye & pumpernickel bread

jumbo shrimp display | \$650/100 pieces

horseradish, remoulade & cocktail sauce



WASHINGTON MARRIOTT WARDMAN PARK HOTEL

2660 Woodley Road NW | Washington | DC 20008

202.328.2000 | www.wardmanpark.com

events by Marriott

breakfast

breaks

lunch

RECEPTION

dinner

beverage

healthy

info

[>hors d'oeuvre](#) [> display](#) [> station](#)

displays | for 1 hour service

marrakesh | \$26 per person

lamb kefta kebabs, chicken kebabs & vegetarian kebabs
harissa sauce, eggplant & hummus dip, pita chips

tapas | \$25 per person (minimum order for 100 people)

rosemary ham & smoked sausages, artichokes & peppers
spicy meatballs, onions & green peppers
fried calamari, lemon aioli, tomato basil sauce
shrimp cilantro tomato salad, stuffed cherry peppers
manchego cheese with tomato & olives, sicilian olives, olive tapanade
marinated anchovies, roasted peppers & olive oil, french bread

fajitas | \$20 per person

grilled marinated strips of chicken and beef skirt steak
sautéed onions & peppers, shredded jack & cheddar cheeses, pico de gallo
sour cream, guacamole, warm flour tortillas, tortilla chips

sushi and sashimi | \$750/100 pieces

sushi & sashimi selections to include salmon, tuna, shrimp & california rolls
fresh ginger, wasabi mustard & soy sauce

oysters | \$650/100 pieces*

cocktail sauce, mignonette sauce, lemon & tobasco sauce

*(1) shucker attendant for every (50) guests at \$300 per attendant



WASHINGTON MARRIOTT WARDMAN PARK HOTEL

2660 Woodley Road NW | Washington | DC 20008

202.328.2000 | www.wardmanpark.com

events by Marriott

breakfast

breaks

lunch

RECEPTION

dinner

beverage

healthy

info

[>hors d'oeuvre](#) [> display](#) [> station](#)

carving & action stations* | for 1 hour service

roasted turkey breast | \$17

cranberry apple relish, chardonnay reduction
miniature rolls

peruvian chicken | \$19

honey chipotle drizzle, peruvian potatoes

smoked pork loin | \$18

spicy brown mustard, apricot chutney
buttermilk biscuits

tenderloin of beef | \$25

onion relish, horseradish cream
miniature rolls

argentinean style beef sirloin | \$24

placed on large skewers
chimichurri, horseradish cream
whole grain mustard
miniature rolls

barbeque brisket of beef | \$20

honey barbeque sauce
soft onion rolls

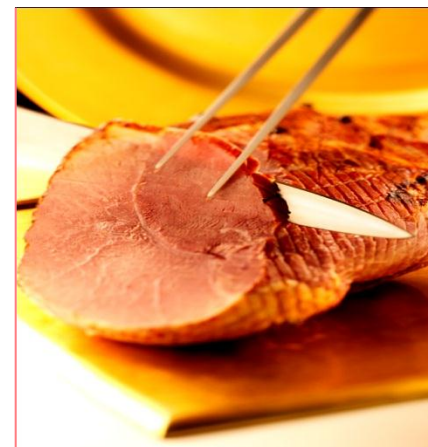
potato martini bar | \$15

yukon gold mashed potatoes

blue cheese crumbles
cheddar cheese
peppercorn bacon
sautéed shiitake mushrooms,
caramelized onions & demi glaze

mashed sweet potatoes

brown sugar & cinnamon
marshmallows
candied pecans
dried cranberries
whipped cream & orange zest



***fifty (50) person minimum per station selection**

(1) carver for every (50) guests, \$200 per carver/attendant

A customary 22% taxable service charge and 10% sales tax will be added to all food & beverage prices.
Prices are per person unless otherwise indicated. All prices subject to change with market fluctuations. (A/M)

[home](#) [<](#) [>](#)

WASHINGTON MARRIOTT WARDMAN PARK HOTEL

2660 Woodley Road NW | Washington | DC 20008

202.328.2000 | www.wardmanpark.com

events by Marriott

breakfast

breaks

lunch

RECEPTION

dinner

beverage

healthy

info

[>hors d'oeuvre](#) [> display](#) [> station](#)

action stations* | for 1 hour service

asian station | \$29

two (2) attendants required per station

dim sum & shumai with plum sauce, presented in steamer baskets

shrimp pad thai

hand-rolled peking duck wraps, green onion & hoisin sauce

vegetable fried rice

pasta station | choose 2 | \$22

penne with wild mushrooms, sweet basil, arugula & pomodoro sauce

tortellini with chicken apple sausage, fennel & diced tomatoes

ricotta basil ravioli sautéed with garlic, shallots & virgin olive oil

whole wheat pasta with pesto, pine nuts, basil & wild mushrooms

risotto made to order station | \$22

risotto topping selections to include:

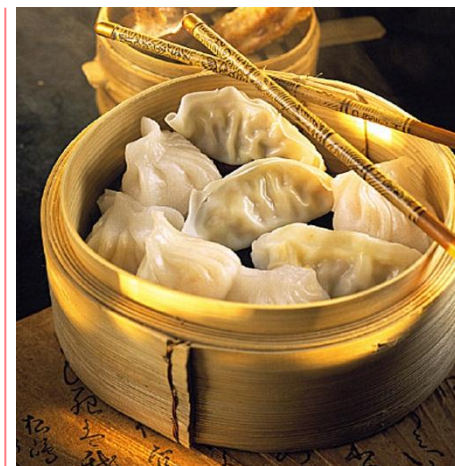
sun dried tomatoes, roasted garlic, asparagus tips, green peas

rock shrimp, pancetta, diced portobello mushrooms, spinach

tomodoro sauce & shaved parmesan

***fifty (50) person minimum per station selection**

(1) attendant for every (50) guests, \$200 per attendant



WASHINGTON MARRIOTT WARDMAN PARK HOTEL

2660 Woodley Road | Washington | DC 20008

202.328.2000 | www.marriott.com

events by Marriott

breakfast

breaks

lunch

RECEPTION

dinner

beverage

healthy

info

[>hors d'oeuvre](#) [> display](#) [> station](#)

action stations* | for 1 hour service

mini slider station | \$24**

aged grilled new york steak
caramelized onions & sautéed mushrooms

seared organic chicken
mozzarella cheese

crispy crab cakes
lobster aioli

house made potato chips
sundried tomato dip

quesadillas | \$22

chicken & shrimp made to order quesadilla

peppers, jalapenos, green onions, tomatoes,
monterey jack & cheddar cheese & sour cream

house made guacamole
ripe avocados, tomatoes, red onion, chopped cilantro
crushed garlic fresh lime juice

warm tortilla chips & tomato salsa

***fifty (50) person minimum per station selection
(1) attendant for every (50) guests, \$200 per attendant**

**** one of each per person**



WASHINGTON MARRIOTT WARDMAN PARK HOTEL

2660 Woodley Road | Washington | DC 20008

202.328.2000 | www.marriott.com

events by Marriott

breakfast

breaks

lunch

RECEPTION

dinner

beverage

healthy

info

> hors d'oeuvre > display > station

action stations* | for one hour service

maryland crab cakes | \$22

sautéed to order lump crab cake
lemon butter, remoulade & cocktail sauce
micro greens & seaweed salad

scampi | \$22

jumbo shrimp
sautéed in olive oil, shallots, capers, lemon, garlic & fresh herbs
forbidden rice

macaroni & cheese martini bar | \$20 per person

lobster & shredded cheddar cheese
ham & chives
pecorino cheese

***fifty (50) person minimum per station selection
(1) attendant for every (50) guests, \$200 per attendant**



WASHINGTON MARRIOTT WARDMAN PARK HOTEL

2660 Woodley Road | Washington | DC 20008

202.328.2000 | www.marriott.com

events by Marriott

breakfast

breaks

lunch

RECEPTION

dinner

beverage

healthy

info

[>hors d'oeuvre](#) [> display](#) [> station](#)

sweet finish stations | for one hour service

crème brulee station | \$15*

cinnamon , caramel and
vanilla crème brulee

chocolate cream puff | \$15*

chocolate cream puffs
mint chocolate chip ice cream
vanilla ice cream
hot fudge

warm beignet station | \$18*

lemon curd
cinnamon sugar
berry coulis
chocolate & vanilla sauce

chocolate fondue station | \$15

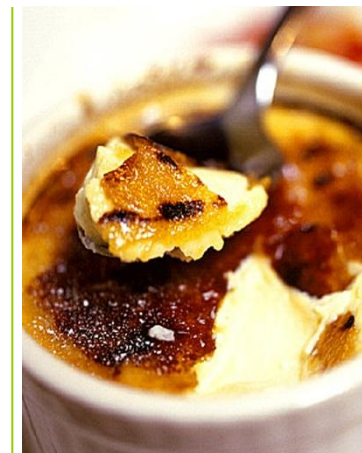
cubed fruits & strawberries
marshmallows, rice krispy treats
warm dark & white chocolate sauce

ice cream station | \$17*

vanilla & chocolate ice cream
hot fudge
strawberry & caramel sauce
toasted coconut, chopped nuts
maraschino cherries
crumbled heath bars
whipped cream

dessert display | \$26

miniature pastries
tortes & pies
chocolate dipped strawberries
truffles
tea cookies & biscotti
flavored coffee station
chocolate shavings
whipped cream
cinnamon sticks & sugar cubes



*** (1) attendant for every (50) guests, \$200 per attendant**

WASHINGTON MARRIOTT WARDMAN PARK HOTEL

2660 Woodley Road | Washington | DC 20008

202.328.2000 | www.marriott.com

events by Marriott

dinner

[breakfast](#)[breaks](#)[lunch](#)[reception](#)[DINNER](#)[beverage](#)[healthy](#)[info](#)[> plated](#) [> buffet](#)

FLAVOR

[salads](#)[salmon](#)[poultry](#)[scallops](#)[filet](#)[lamb](#)[desserts](#)

WASHINGTON MARRIOTT WARDMAN PARK HOTEL

2660 Woodley Road | Washington | DC 20008

202.328.2000 | www.marriott.com

events by Marriott

breakfast

breaks

lunch

reception

DINNER

beverage

healthy

info



appetizers

shrimp cocktail | \$ 12

over seaweed salad

roasted duck breast | \$ 11

frissee, red onion marmalade

tuna martini | \$ 12

seared tuna & tuna tartar, fennel salad

seared sea scallops | \$ 12

mascarpone & herb polenta

parpadelle pasta | \$ 9

wild shiitake & trumpet mushrooms

lobster bisque | \$ 9

lobster – cilantro

ravioli | \$ 9

spinach & butternut squash

julienne vegetables, parmesan cheese

mushroom bisque | \$ 8

fried shiitake mushrooms en croute

house wine service | \$ 38 per bottle

BV coastal estate vintner's chardonnay

BV coastal estate vintner's cabernet sauvignon

WASHINGTON MARRIOTT WARDMAN PARK HOTEL

2660 Woodley Road, NW | Washington | DC 20008

202.328.2000 | www.marriott.com

events by Marriott

breakfast

breaks

lunch

reception

DINNER

beverage

healthy

info

plated dinner



all entrees include

starters

seasonal vegetables

chef choice of starch

fresh baked bread service

coffee and tea service

starter course

baby spinach salad

fanned poached pear, gorgonzola, roasted pine nuts
red wine vinaigrette

organic greens

organic greens, shaved seasonal vegetables, and aged sherry vinaigrette

baby wedge iceberg

tomato wedges, maytag bleu cheese, watercress
champagne vinaigrette

the wardman salad

local greens, candied pecans, fried vermont goat cheese
fresh raspberries & dried cherries
white wine walnut oil vinaigrette

starter enhancements

mozzarella and tomato tower | add \$2

toasted pine nuts & basil chiffonade, balsamic vinaigrette

belgian endive | add \$2

endive, red oak and watercress, cabernet poached pear, maytag blue
cheese crustini and port wine vinaigrette

heirloom roasted gold & red beet carpaccio | add \$3

gold & red beet carpaccio, baby greens, goat cheese croutons, citrus honey
vinaigrette

chesapeake iceberg wedge | add \$3

lump crab & bacon, crumbled bleu cheese & corn, blistered tomatoes
buttermilk dressing

WASHINGTON MARRIOTT WARDMAN PARK HOTEL

2660 Woodley Road, NW | Washington | DC 20008

202.328.2000 | www.marriott.com

events by Marriott

breakfast

breaks

lunch

reception

DINNER

beverage

healthy

info

plated entree



seared truffle chicken au jus | \$ 70

mushroom ragout

free range breast of chicken | \$ 70

parmesan herb crusted breast of chicken
white balsamic & pesto sauce

seared duck breast | \$ 75

fresh sage pan gravy

char grilled salmon | \$ 75

shitake mushrooms
pinot noir sauce

napa cabbage cod | \$ 80

roasted shallots & herb jus, wrapped in napa
cabbage

highest entrée price will apply for all pre-selected entrée choices

WASHINGTON MARRIOTT WARDMAN PARK HOTEL

2660 Woodley Road, NW | Washington | DC 20008

202.328.2000 | www.marriott.com

events by Marriott

[breakfast](#)[breaks](#)[lunch](#)[reception](#)[DINNER](#)[beverage](#)[healthy](#)[info](#)

plated entrée continued



pan seared halibut | \$ 80

preserved lemon beurre blanc

grilled filet mignon | \$ 82

cabernet reduction

thyme & rosemary crusted rack of lamb | \$ 86

lamb jus

grilled veal chop | \$ 86

morel mushroom sauce

highest entrée price will apply for all pre-selected entrée choices

WASHINGTON MARRIOTT WARDMAN PARK HOTEL

2660 Woodley Road, NW | Washington | DC 20008

202.328.2000 | www.marriott.com

events by Marriott

breakfast

breaks

lunch

reception

DINNER

beverage

healthy

info

duet combination plates



filet mignon and roasted cod | \$ 88

petite filet mignon, port reduction
roasted cod , chardonnay beurre blanc

filet mignon and maryland lump crab cake | \$ 90

petite filet mignon, roasted tomato bordelaise
crab cake, pommery mustard beurre blanc

grilled sirloin filet and lobster timbale | \$ 89

petite sirloin filet, cabernet mushroom reduction
lobster timbale, orange ginger glaze

braised short rib and scallops | \$ 88

braised beef short rib, grain mustard demi
pan seared day boat scallops, lemon pepper coulis

WASHINGTON MARRIOTT WARDMAN PARK HOTEL

2660 Woodley Road, NW | Washington | DC 20008

202.328.2000 | www.marriott.com

events by Marriott

breakfast

breaks

lunch

reception

DINNER

beverage

healthy

info

desserts | \$ 9

wardman krunch

hazelnut praline, chocolate plaque

crème brulee tart

raspberry & apricot sauce

pineapple upside-down cheesecake

grilled pineapple, soft cheesecake, graham cracker crumbles

almond and cherry tart

praline chocolate sauce, black currant cream

classic opera torte

chocolate cream, coffee butter cream
chocolate ganache
thin layers of rum-soaked almond sponge cake

mascarpone bavarian

citrus chiffon, raspberry fig marmalade
vanilla mascarpone cream



desserts | \$11

sweet trio

dark chocolate flourless cake, poached pear ,
caramelized cheesecake

milk chocolate mousse dome

salted caramel center

desserts | \$13

caramel charlotte royale

caramel mousse pyramid wrapped in rolled fruit chiffon
blackberry sauce

breakfast

breaks

lunch

reception

DINNER

beverage

healthy

info

dinner buffet

buffet 1 | \$90

maryland crab & corn chowder

dilled shrimp salad

cilantro jalapeno cole slaw

market blend of field greens

assorted garden vegetables and dressings

pan seared maryland crab cakes

pan seared rockfish

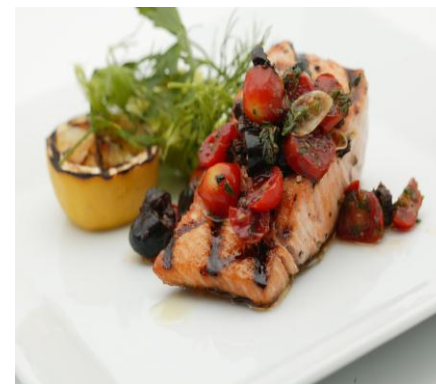
bourbon barbecue chicken

new potatoes

seasonal vegetables

red velvet cake

chocolate peanut cheesecake



***fifty (50) person minimum for dinner buffets**

breakfast

breaks

lunch

reception

DINNER

beverage

healthy

info

dinner buffet

buffet 2 | \$ 85*

grilled vegetable salad, feta cheese, balsamic vinaigrette

asparagus salad & chef's pasta salad

seasonal greens, champagne vinaigrette

entrée | choose 2

grilled breast of chicken, braised leeks, aged balsamic essence

shrimp, scallops & mushrooms, lobster sauce

poached salmon, white wine dill sauce

grilled new york angus steak, cracked peppercorn sauce

roasted tenderloin of beef, merlot sauce *

starch | choose 1

rice pilaf, white & wild rice with mushrooms, saffron orzo

roasted new potatoes, potatoes au gratin, parsley mashed potatoes

seasonal vegetables

strawberry shortcake

boston cream cake



***fifty (50) person minimum for dinner buffets**

**** (1) carver attendant for every (50) guests, \$200 per carver attendant for two hours**

beverage

[breakfast](#)[breaks](#)[lunch](#)[reception](#)[dinner](#)[BEVERAGE](#)[healthy](#)[info](#)

events by Marriott

[breakfast](#)
[breaks](#)
[lunch](#)
[reception](#)
[dinner](#)
[BEVERAGE](#)
[healthy](#)
[info](#)
[> bars](#)
[> wines](#)


red wines

medium body with mild tannins | priced per bottle

pinot noir, la crema, sonoma coast	\$58
pinot noir, BV coastal estate vintners selection	\$38
pinot noir, robert mondavi, napa valley	\$78
chianti classico, ruffino riserva ducale, italy	\$75
pinot noir, clos du bois, sonoma county	\$46

medium to fuller bodied with moderate tannins | priced per bottle

merlot, clos du bois, north coast	\$48
merlot, BV century cellars	\$38
merlot, meridian	\$46
merlot, stone cellars by beringer	\$38
zinfandel, rancho zaboco sonoma heritage vines	\$46
merlot, st. francis vineyards, sonoma county	\$78

fuller, richer & more tannins | priced per bottle

cabernet sauvignon, estancia, paso robles	\$48
cabernet, sauvignon, stone cellars by beringer	\$38
cabernet sauvignon, clos du bois, sonoma county	\$44
cabernet sauvignon, robert mondavi, napa valley	\$98
cabernet sauvignon, BV century cellars	\$38

events by Marriott

[breakfast](#)
[breaks](#)
[lunch](#)
[reception](#)
[dinner](#)
[BEVERAGE](#)
[healthy](#)
[info](#)
[> bars](#)
[> wines](#)


white wines, blush wines and champagne

sparkling | priced per bottle

freixenet blanc de blancs	\$38
gloria ferrer	\$46
mumm napa, napa brut prestige	\$48
moet & chandon, brut imperial rose	\$110
taittinger brut ala francaise	\$100

blush wine, light, fruity & sweet | priced per bottle

white zinfandel, beringer, LVS, california	\$38
--	------

light to medium bodied | priced per bottle

pinot grigio, stone cellars by beringer	\$38
pinot grigio, pighin, grave del friuli	\$44
fume blanc, ferrari-carano	\$44
sauvignon blanc, brancott, marlborough	\$46

medium bodied to fuller | priced per bottle

chardonnay, clos du bois, north coast, california	\$46
chardonnay, stone cellars by beringer	\$38
chardonnay, rosemount estate, australia	\$42
chardonnay, cakebread, napa valley	\$110
chardonnay, chalk hill	\$95
chardonnay, BV century cellars	\$38

A customary 22% taxable service charge and 10% sales tax will be added to all food & beverage prices.
Prices are per person unless otherwise indicated. All prices subject to change with market fluctuations. (A/M)

[home](#) [<](#) [>](#)

events by Marriott

[breakfast](#)
[breaks](#)
[lunch](#)
[reception](#)
[dinner](#)
[BEVERAGE](#)
[healthy](#)
[info](#)
[> bars](#)
[> wines](#)


cocktails

hosted bar

premium mixed	\$9.00 per drink
top shelf mixed	\$10.00 per drink
premium beer	\$8.50 per bottle
domestic beer	\$8.00 per bottle
BV century cellars wine	\$9.50 per glass
soft drinks	\$5.50 per drink
spring/sparkling water	\$5.50 per bottle
rocks & cordials	\$13.00 per glass

beer selection to include

[miller lite](#)
[budwesier](#)
[bud light](#)
[heineken](#)
[amstel light](#)
[samuel adams](#)
[flying dog pale ale](#)

premium bar

[smirnof vodka](#)
[beefeater's gin](#)
[cruzan light aged rum](#)
[dewar's white label scotch](#)
[jim beam bourbon](#)
[canadian club whiskey](#)
[jose cuervo tequila](#)
[korbel brandy](#)

top shelf bar

[absolut vodka](#)
[tanqueray gin](#)
[bacardi superior rum](#)
[johnnie walker red label scotch](#)
[maker's mark bourbon](#)
[jack daniels whiskey](#)
[cuervo 1800 silver tequila](#)
[courvoisier brandy](#)

bartender fee

\$200 for 2 hours of service per bar
 \$ 75 for each additional hour

cashier fee (if applicable)

\$200 for 2 hours of service per bar
 \$ 75 for each additional hour

events by Marriott

[breakfast](#)
[breaks](#)
[lunch](#)
[reception](#)
[dinner](#)
[BEVERAGE](#)
[healthy](#)
[info](#)
[> bars](#)
[> wines](#)


cocktails

open bar |

	premium	top shelf
one hour	\$22	\$24
two hours	\$32	\$36
three hours	\$42	\$48

premium bar

smirnoff vodka
 beefeater gin
 cruzan light aged rum
 dewars white label
 scotch
 jim beam white label
 bourbon
 canadian club whiskey
 jose cuervo gold tequila

top shelf bar

absolut vodka
 tanqueray gin
 bacardi superior rum
 johnnie walker red
 label scotch
 makers mark bourbon
 seagrams vo bourbon
 cuervo 1800 silver
 tequila

bartender fee

\$200 for 2 hours of service per bar

\$ 75 for each additional hour

healthy

[breakfast](#)[breaks](#)[lunch](#)[reception](#)[dinner](#)[beverage](#)[HEALTHY](#)[info](#)

SMART

granola

yogurt

nuts

salad

fruit

salmon

vegetables

pita



WASHINGTON MARRIOTT WARDMAN PARK HOTEL

2660 Woodley Road NW | Washington | DC 20008

202.328.2000 | www.marriott.com

events by Marriott

breakfast

breaks

lunch

reception

dinner

beverage

HEALTHY

info

fit for you breakfast



continental breakfast | \$36

chilled fruit juices
fresh fruit and berries
granola and low fat honey yogurt dressing
assorted dry cereals with 2% and skim milk
coffee and tea service
low cholesterol*
low fat*

healthy choice | \$40

sliced fresh fruit & berries
granola and nutri-grain bars
fruit & yogurt parfaits
fruit smoothies
diet soft drinks and mineral waters
sport and high energy drinks
coffee and tea service
low fat*
low cholesterol*



enhancements | \$ 12

high protein breakfast

sliced meats to include
smoked ham, roasted turkey, salami and prosciutto
sliced soft breakfast cheeses to include
brie, cheddar and jarsberg

soft or hard boiled eggs

fresh yogurt smoothies | \$6 per person**

made to order with strawberries and bananas

****station attendant required at \$200 each for two hours of service**

WASHINGTON MARRIOTT WARDMAN PARK HOTEL

2660 Woodley Road NW | Washington | DC 20008

202.328.2000 | www.marriott.com

events by Marriott

breakfast

breaks

lunch

reception

dinner

beverage

HEALTHY

info

fit for you breaks

morning breaks

low cholesterol, low fat | \$32

assorted power bars
assortment of low fat muffins
seasonal fresh fruit
low-fat plain and fruit yogurt
banana chips, dried apricots,
dates and raisins
coffee and tea service
mineral water, diet soft drinks

carb conscious | \$28

low carb bars
hard boiled eggs
domestic cheese display
coffee and tea service
mineral water, diet soft drinks

afternoon breaks

low cholesterol, low fat | \$28

assorted power bars
assortment of baked chips
seasonal fresh fruit
soft warm pretzels, assorted mustards
coffee and tea service
mineral water, diet soft drinks

low cholesterol, low fat | \$30

sugar free candy
assorted deli meats
domestic cheese display
coffee and tea service
mineral water, diet soft drinks



WASHINGTON MARRIOTT WARDMAN PARK HOTEL

2660 Woodley Road NW | Washington | DC 20008

202.328.2000 | www.marriott.com

events by Marriott

breakfast

breaks

lunch

reception

dinner

beverage

HEALTHY

info

fit for you plated lunch

grilled shrimp salad nicoise style | \$52

boston lettuce and baby green beans
tear drop tomatoes
kalamata olives
hard boiled eggs
mustard vinaigrette

miso glazed salmon | \$54

miso glazed salmon with lemongrass broth
steamed rice
baby bok choy

flat iron steak | \$54

miso grilled flat iron steak
ginger shiitake mushrooms, soy mustard sauce
fresh asparagus and sugar snap peas



bag lunch | \$40

small bag of pretzels
fruit salad
tortilla wrap, 5 g carb
smoked turkey (low fat/cholesterol), ham or roast beef
meat and cheese only: carb conscious
tomato basil salad, 5 g carb
tofu salad with ginger miso dressing, 4 g carb

WASHINGTON MARRIOTT WARDMAN PARK HOTEL

2660 Woodley Road NW | Washington | DC 20008

202.328.2000 | www.marriott.com

events by Marriott

breakfast

breaks

lunch

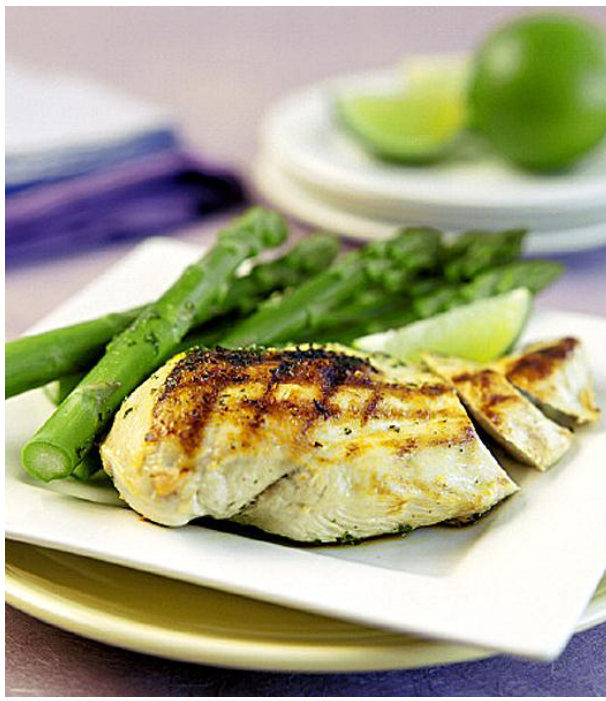
reception

dinner

beverage

HEALTHY

info



fit for you plated dinner

porcini crusted steak | \$80

new york sirloin steak

blue cheese spinach

arugula onion salad

roasted chicken | \$70

breast of chicken diablo

herb and lemon juice

steamed rice

steamed vegetable medley

lemon filet of sole | \$78

filet of sole seared

fine herbs in a lemon vinaigrette

tomato confit

steamed broccolini

consult with your event manager for appetizer and dessert selections

A customary 22% taxable service charge and 10% sales tax will be added to all food & beverage prices.
Prices are per person unless otherwise indicated. All prices subject to change with market fluctuations. (A/M)

[home](#) < >

WASHINGTON MARRIOTT WARDMAN PARK HOTEL

2660 Woodley Road NW | Washington | DC 20008

202.328.2000 | www.marriott.com

events by Marriott

breakfast

breaks

lunch

reception

dinner

beverage

HEALTHY

info



hors d'oeuvres

low cholesterol

grilled vegetable skewer, soy glaze | \$7 each

low fat

ginger chicken skewer, wasabi teriyaki glaze | \$7 each

carb conscious

swedish meatballs | \$6.50 each

beef tenderloin brochettes, ginger lemon grass glaze | \$7 each

fit for you reception



presentations and stations

low cholesterol

seasonal fruits and berries | \$14 per person

mocha low fat yogurt sauce and strawberry coulis

low fat

fresh and grilled vegetables | \$12

spinach artichoke dip & blue cheese dip

carb conscious

assorted cheeses | \$17

stilton, saga, chevre, cheddar, port-salut, bel paese
jarlsberg, havarti, st. andre and brie
sliced french baguettes & assorted crackers

mignonettes of beef station | \$24*

sautéed & deglazed
choice of peppercorn or morel cream sauce
(2 pieces per person)

***fifty (50) person minimum per station selection**

(1) attendant for every (50) guests, \$200 per attendant

info

[breakfast](#)[breaks](#)[lunch](#)[reception](#)[dinner](#)[beverage](#)[healthy](#)[INFO](#)

WASHINGTON MARRIOTT WARDMAN PARK HOTEL

2660 Woodley Road NW | Washington | DC 20008

202.328.2000 | www.marriott.com

events by Marriott

breakfast

breaks

lunch

reception

dinner

beverage

healthy

INFO

General Information

The following printed menus are guidelines designed to assist you in selecting a menu for your event. Our Event staff will be happy to prepare a customized proposal to meet your specific needs. All prices are subject to change without notice. Your Event/Catering Manager will confirm menu prices.

Taxes and Service Charges

A twenty two percent (22%) taxable service charge and ten percent (10%) District of Columbia Sales Tax will be added to all food and beverage and audio visual charges. Bartender and attendant fees are subject to 10% District of Columbia Sales Tax. The aforementioned taxes are mandated by District of Columbia law.

US Government, the District of Columbia, and their political subdivisions, departments and institutions, are exempt when supported by a government purchase order or remittance

advice and payment is made directly to the hotel by the governmental entity. At the time of purchase the government entity should indicate on the Certificate of Exemption, that payment is made from funds of the government entity. Sales to other states or their departments are subject to tax. Non-profit religious, scientific, charitable or educational organizations must be exempt under IRS code 501©(3) or 501©(4), provide a copy of the Federal exemption letter, and a District of Columbia exemption certificate.

Food and Beverage Guarantees(s)

All catered food and beverage require attendance guarantee(s). Final attendance must be confirmed three (3) business days in advance by 12 Noon, or the expected number will be used as the guarantee.

This number will be your guarantee and is not subject to reduction. We will set and prepare for three percent (3%) over the guarantee, and for groups over 1,000 guests we will set a maximum of fifty (50) guests over the guarantee.

Labor Charges and Fees

Carvers, station attendant and food and cocktail servers are available at a fee of \$200 per attendant for each two-hour time period. Additional hours are charged \$50 per hour, per Attendant.

A \$200 bartender fee per bartender for up to a minimum of two (2) hours will apply to all bars. Additional hours are charged at \$50 per hour, per bartender. When providing cash bar arrangements, it is necessary to provide one cashier per 150 guests. Cashiers must be included for all cash bars. The cashier fee is \$200 per cashier per two hours.

WASHINGTON MARRIOTT WARDMAN PARK HOTEL

2660 Woodley Road NW | Washington | DC 20008

202.328.2000 | www.marriott.com

events by Marriott

breakfast

breaks

lunch

reception

dinner

beverage

healthy

INFO

Additional hours are \$50 per hour, per cashier. Cash bar(s) must generate at least \$500 per bar. Any difference below the minimum required revenue will be charged back to the customer via the groups master account.

An additional service charge will be levied if a breakfast or lunch exceeds (3) hours, or a dinner function exceeds (4) hours in duration, including set-up and tear down times. Charges will be calculated at \$20 per server, per hour, beyond the allotted time for your event.

A \$150 labor charge will be applied to any plated or buffet meal function of less than 25 guests.

A \$2 labor charge per person will be applied to any seated continental breakfast.

Fit For You – Food to Fit Your Lifestyle

Our Culinary Team can prepare Food to fit your Lifestyle. Whether is a breakfast for ten guests or a reception for 500 guests, our service experts can meet the dietary needs of you, our customer. Please refer to the Fit for You Menu Option in the following menus.

Food and Beverage

Due to liability and legal restrictions, no outside food or beverages of any kind may be brought in the Hotel by the customer, guest, or exhibitors. The Marriott Wardman Park Hotel is the only licensed authority to sell and serve alcohol for consumption on the premises.

District of Columbia Law requires persons to be a minimum of 21 years of age to consume alcoholic beverages. The Hotel reserves the right to refuse service to anyone.

Prices

The prices herein are subject to increase if the event cost of food, beverage, or other costs associated with the operation of the event increases at the time of the function due to unexpected supply shortage.

Electrical Charges

The hotel can accommodate any electrical need. There will be charges for electrical requirements exceeding standard capacity. Please consult with your Event/Catering Manager for details.

WASHINGTON MARRIOTT WARDMAN PARK HOTEL

2660 Woodley Road NW | Washington | DC 20008

202.328.2000 | www.marriott.com

events by Marriott

breakfast

breaks

lunch

reception

dinner

beverage

healthy

INFO

Event Technology/Audio Visual

A complete line of modern presentation aids are available through our in-house audiovisual company, PSAV Presentation Services. Please note that all audio visual services are subject to a twenty two percent (22%) taxable service charge and six percent (6%) sales tax. Your Event/Catering Manager will be glad to procure your audio visual needs.

Outside Vendors

All Vendors (ie. entertainment, decorators, etc.) contracted by the group directly must sign the Marriott Wardman Park Hotel's Vendor Agreement and provide the appropriate liability insurance verification. Any damages or excessive cleaning required will be the responsibility of the Group.

Signage and Decor

The Marriott Wardman Park Hotel reserves the right to approve all signage, staging, props and décor. Signs, banners or posters are not to be taped, stapled, nailed or affixed in an other manner to the walls, columns, floor or ceiling of the hotel: nor should they obstruct permanent Hotel signage from view.

A fee is associated with the hanging of banners and signage in the meeting and public space. The fee is determined by the Director of Technical Services based on size and degree of difficulty.

The hotel prohibits signs, banners, easels and posters from being displayed in the Main Lobby.

Security

The Hotel may require security officers for certain events. Only Hotel approved security companies may be used.

Life Safety

All events are subject to local life safety codes and may require approved diagrams and special precautions.

Meeting Planner Guide

Please reference the Meeting Planner Guide which outlines services and hotel regulations for hosting your event at the Marriott Wardman Park Hotel.