



McMENAMINS GRAND LODGE

FOREST GROVE, OR



AUGUST 2012



INTRODUCTION & HISTORY

McMenamins Grand Lodge is set in Forest Grove on 13 acres of beautiful gardens and sweeping lawns that surround this majestic architecture, originally built as a Masonic Lodge. Welcoming gathering spaces abound, including sunny parlor rooms, an elegant auditorium and a cottage full of charming meeting rooms, accompanied by lush outdoor spaces extending the possibilities.

The Grand Lodge is an ideal place for all types of events, from outdoor weddings to company meetings to family reunions and more.

The grandeur that you see today was founded in 1922 as one of the Masonic Lodges of Oregon.

It is an impressive structure with Ionic columns, marble accents and French doors opening into gathering spaces filled with natural light, along with hardwood floors and cozy fireplaces.

A variety of interesting characters once called the place home – Alice Meek Inkley, granddaughter of some of the first Oregon pioneers; WWII photographer Paul Shrock; and jeweler/wind chime craftsman Edwin Fish, to name just a few.

When the Masonic and Eastern Star Home relocated to a new facility in 1999, McMenamins leapt at the opportunity to infuse its lyrical sense into the Masons' historic tradition. The buildings were given a creative and respectful renovation that enhanced their classic, original features and added some fun new twists.

Today, visitors to McMenamins Grand Lodge are offered a bounty of ways to relax, congregate, reinvigorate or celebrate, depending on the need and desire. Groups can gather in one of the well-equipped meeting spaces or smaller groups may choose to dine in the Ironwork Grill or Pat's Corner where locally and seasonally inspired menus and daily specials are available.

Events can also be catered outdoors.

Before retiring to one of 77 comfortably furnished guestrooms, we encourage all visitors to explore the property's multitude of walks, nooks, snugs and other diversions: a warm dip in the soaking pool, a game of pool in the Doctor's Office, a quick round of disc golf about the grounds or a recent-run film in the Compass Room Movie Theater. Or, you may just want to curl up with a book and a nightcap in one of the sun parlors, surf the Internet on your laptop using our free wireless service or perhaps peruse the artwork and historical photos on display throughout the hallways.





FACTS & FIGURES

Location

The Grand Lodge is in Forest Grove, approximately 20 miles west of downtown Portland at the intersection of Pacific Avenue (Highway 8/Tualatin Valley Highway) and Quince Street (Highway 47).

Directions

From Portland

- Take US-26 west to North Plains Exit 57.
- Following the signs to Forest Grove, turn left (south) onto Glencoe Road.
- Follow Glencoe Road to the intersection of Zion Church Road (second light) and turn right. Zion Church Road becomes Cornelius-Schefflin Road.
- At the first traffic circle, follow the sign to Verboort Road.
- At the next traffic circle, follow the sign to Martin Street.
- Follow to stop sign and turn left onto Highway 47/Quince Street.
- Turn right into the second driveway after the railroad tracks.

From Hillsboro

- Take Tualatin Valley Highway (Highway 8) west.
- In Forest Grove, Tualatin Valley becomes Pacific Avenue.
- McMenamins Grand Lodge is located at the intersection of Pacific Ave. and Quince St.

Accommodations

Classic ambiance graces all of the 77 guestrooms at the Grand Lodge, each of which is named for one of the colorful and often whimsical characters who have notable associations with the hotel or the surrounding community. Accommodations are European-style with original porcelain sinks in the rooms and conveniently located bathrooms down the hall. We also have four king rooms with private bathrooms.

For special occasions, a suite with private bath, separate lounge and fireplace is also available.

Conveniences such as telephones and free wireless Internet access for laptop users are standard amenities. All rooms feature fine wood furnishings and cotton bathrobes.

Rooms vary from bunk beds to a king suite. Rates start at \$40 per night, all rates are subject to change.

Call (503) 992-9533 or (877) 992-9533 for information and reservations.

Visit us online at mcmenamins.com.

Conference Facilities

A variety of meeting and event spaces are found in the property's two main buildings, each of which is fully equipped for business or social gatherings. LCD projectors, televisions and VCR/DVD players, flipcharts, display boards and other audiovisual materials are available upon request.

WiFi

We are pleased to offer complimentary wireless Internet access for laptop users within the Main Lodge and the Children's Cottage, as well as Pat's Corner.

Smoking Policy

Smoking is permitted outdoors and in designated areas only.

Local Attractions

Wine tasting and tours · Fernhill Wetlands · Tours of historic homes · Cycling
Henry Hagg Lake for fishing, boating, hiking and disc golf · Antiquing

Golf Courses

Pumpkin Ridge
The Reserve
Quail Valley

Universities

Pacific University



GRAND LODGE EVENT SPACES



MAIN BUILDING

The Ironwork Grill

The airy first-floor restaurant features intricate iron scrollwork, original artwork and antique etched-glass windows, literally providing a view onto the past. The menu features regionally grown and seasonal ingredients, many of which are provided by local farmers. Breakfast is served on the weekends beginning at 7 a.m.

An outdoor, covered terrace provides additional seating and is an excellent spot for private events.

Inside seating capacity is 200 people. Outdoor seating capacity is 60 people.

Compass Room

This former auditorium offers towering windows, an elevated stage with beautiful plasterwork and gorgeous chandeliers. In days gone by, this magnificent space was the setting for everything from Christmas parties to luaus to May Day festivities. Traditions continue today as the Compass Room welcomes guests from all directions for weddings, reunions, meetings and more.

Capacity is 50-150 people.

Alice Inkley Room

This space has an abundance of colorful character, just like its namesake. Alice Inkley came to live at the former home in the late 1980s. She was the granddaughter of one of Oregon's founding fathers, Joe Meek, who settled on land near Forest Grove in 1840. The room's distinctive artwork and spacious quarters reflect the playful spirit and love of open spaces that were characteristic of Alice and her grandfather.

Capacity is 40-75 people.

Equinox Room

This room was named for one of jazz saxophonist John Coltrane's lesser-known masterpieces. It is one of the Grand Lodge's four original and glorious bow-windowed sun parlors, ideal for daytime gatherings. At night the Equinox Room is reminiscent of an intimate jazz den with its casual furniture, fireplace, full bar and mellow jazz compositions for ambiance.

Capacity is 10-40 people.

Billy Scott Room

The second of the sun parlors is set up as a library and bar and celebrates the artistic spirit of local poet Billy Scott who lived at the Masonic Home in the 1940s. When Billy could no longer write, he composed verses in his head and recited them to a nurse. It's easy to picture him seated here by the fireplace, gazing out one of the room's tall windows, ruminating over the perfect words for his next verse.

Perhaps this room will similarly inspire you and your guests.

Capacity is 10-40 people.

Rounder Room

Celebrating the musical and intellectual flavor of a late-1950s Greenwich Village coffee house, the Rounder Room is a convivial gathering spot. It is named for a band of “outlaw folkies,” the Holy Modal Rounders, who set out in New York City during the early 1960s to stand traditional folk music on its ear. Their odyssey brought them west to Portland in the ‘70s and continues unfettered on both coasts today. The Rounder Room features comfortable chairs and couches, a beautiful fireplace and bowed windows with garden views.

Capacity is 10-40 people.

Magic Flute Room

In 1791, the opera entitled “The Magic Flute” was composed by one of history’s more notable Masons, Wolfgang Amadeus Mozart. Legend has it that Mozart included top-secret Masonic lore in this musical drama. The passion and the drama of his music translates to this magical space, one of the building’s majestic sun parlors. Garden and sunset views, a fireplace, full bar and classical music make the Magic Flute Room a perfect gathering spot.

Capacity is 10-40 people.

Doctor’s Office Bar

The former dental office for the Masonic Home residents is now a festive space anchored by a collection of billiard tables and an extraordinary German back bar built in the 1860s. An event in this spot may be just what the doctor ordered.

Capacity is 24-60 people.

Bob’s Bar

This elegant basement bar, named in honor of the McMenamin brothers’ father, may remind your guests of the chic little bistros of Europe. It offers a list of Edgefield Winery vintages as well as McMenamins ales on tap.

And when weather allows, the adjacent Garage Door area is opened wide so that guests can enjoy the fresh air along with live music.

Capacity is 32





PAT'S CORNER

At the edge of the Grand Lodge's front lawn, the comfortable Pat's Corner is a welcoming spot with a fireplace, full-service bar, cobblestone floor and chandelier suspended from a vaulted ceiling. Check out the amazing collection of album covers overhead! This space is available seasonally for reception-style events.

Capacity is 40 people.

OUTDOOR SPACES

We offer a selection of lovely outdoor spaces that are alive with trees, flowers and other flora. There are spots that suit both small and very large gatherings. Canopies or tents are highly recommended in case of inclement weather.

Delia's Garden

This lush greenspace within the front lawn is adorned with an abundance of trees and bushes bordering the manicured lawn. It will make your guests feel as though they have stepped into an elegant country garden.

Capacity is 300 people.

Willow Grove

In the shade of these mystical trees on the front lawn, take in beautiful views of the rose garden in the foreground and the rolling blue hills in the background.

Capacity is 1000 people.

Catchings Grove & Ironwork Patio

This popular space is both pretty and practical – you'll have the patio just outside the Ironwork Grill that is covered by a wooden trellis overhead for those guests who wish to sit, along with a secret clearing bordered by flowering trees next to the main lodge.

Capacity is 120 people.

Cedar Grove

In this charmingly misnamed spot, three ancient redwoods stand tall over your occasion, lending an air of stately elegance. This spot can be sold as a package along with the Children's Cottage.

Capacity is 120 people.

Hayne's Clearing

Named for Civil War vet Harry Haynes who owned a farm east of the Masonic home, the clearing borders the beautiful outdoor soaking pool and looks out over the 10th hole on the disc golf course. This area can be sold as a package along with the Alice Inkley Room.

Capacity is 150 people.

Atfalati's Hideaway

Named for the Native American people who once inhabited the hills around Forest Grove, this shady, secluded glen set on the edge of the estate is an ideal spot for a family barbecue or perhaps a reunion. Surrounded by lovely trees and blooming foliage, you and your



HISTORY

6000 B.C.: The Atfalati (from which the modern derivation *Tualatin* originates) are the first people to live in the vicinity of the McMenamins Grand Lodge site, arriving some 8,000 years ago and establishing seasonal villages and campsites.

1841: Retired fur trappers, including Joe Meek, settle on nearby lands of the fertile Tualatin Valley.

1849: The school now known as Pacific University is established at West Tuality, since renamed Forest Grove.

1897: The Masonic Grand Chapter of Oregon adopts a recommendation “that steps be taken to establish a home for widows and orphans of Masons.”

1917: After 20 years of planning and fundraising, the Grand Lodge & Grand Chapter adopts resolutions declaring for the establishment of a Masonic and Eastern Star Home in the State of Oregon “for the aged and infirm, and the poor and distressed worthy Master Masons, their widows and orphans . . .” At the time, there were approximately 30 such Masonic Homes operating in 29 states. A 30-acre site east of Forest Grove is acquired for Oregon’s Masonic Home.

1920: The first contract for construction is let on May 2, and the cornerstone is laid on June 16. Plans are implemented to include an on-site farm operation to supplement the Home’s food needs.

1922: The main lodge’s central and east wings are completed January 1 at a cost of \$226,000. The first resident, Brother Henry Mounts, moves in on February 24.

Qualifications for admission to the Masonic & Eastern Star Home of Oregon:

- a. Physically unable to make a living
- b. In destitute circumstances
- c. Without relatives who are able to support them
- d. Of good character
- e. Free from mental, infectious or contagious diseases
- f. Of temperate habits and not addicted to the excessive use of liquors or narcotics

1926: An orphanage called the “Children’s Cottage” is completed on site at a cost of \$33,572 (furnished). Capacity of the new facility is 32 children.

1927: It is decided that the orphanage be closed due to strained relations between the elderly and children. Over the subsequent few years, the children are relocated to outside families.

1934: Focus of the Home shifts to caring for the sick and infirm. The average attendance over the past year is 92 residents, the largest number to date.

Mid-1980s: Alice Meek Inkley, granddaughter of local pioneer Joe Meek, comes to live at the Masonic Home.

1999: The Masons build new facilities on the north half of the property and sell the old home to McMenamins.

March 2000: McMenamins Grand Lodge opens.





BOOKING INFORMATION

Meeting and event spaces are reserved through our Sales & Events Department. Food and beverages are catered by our onsite restaurant. Minimum food and beverage purchases apply to each room, varying on the size of the room, time of day and day of the week. Each function requires an advance deposit with the balance due upon conclusion of the event. A direct billing option is available for corporate groups with advance arrangements.

Fully equipped rooms for business or social meetings are one of our hotel's highlights.

LCD projectors, flipcharts, display boards and other materials are available upon request. We offer free wireless Internet access throughout the property.

The hotel's catering department offers special menus for all events, from conferences to wedding receptions and more.

For more information, contact our sales coordinators:

(503) 992-9530 or (877) 992-9530

MEETING ROOM SPECIFICATIONS

Maximum Number of Guests per Set-up Style

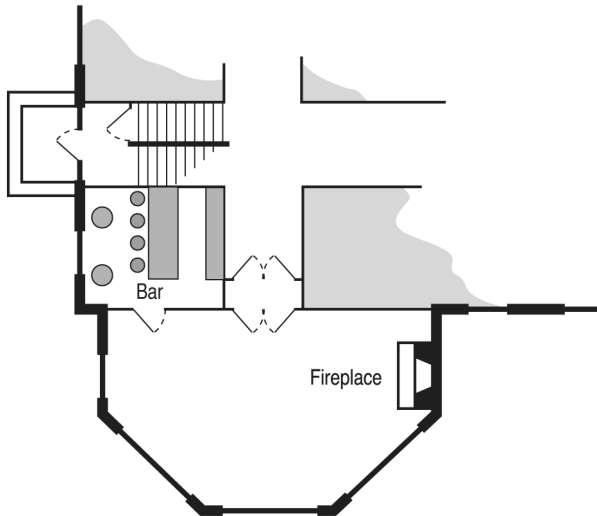
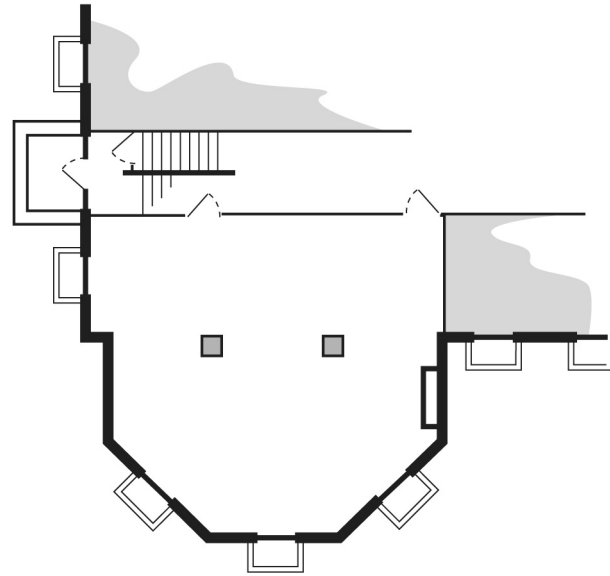
	<i>Rounds</i>	<i>Reception</i>	<i>Classroom</i>	<i>Theater</i>	<i>Square</i>
Compass Room	100	150	70	150	68
Alice Inkley Room	40	75	40	60	24
Equinox Room	32	40	20	30	20
Billy Scott Room	32	40	20	30	20
Magic Flute Room	32	40	20	30	20
Rounder Room	32	40	20	30	20
Doctor's Office	NA	60	NA	NA	NA
Bob's Bar	NA	32	NA	NA	NA
Entire Cottage (includes lawn and Cedar Grove)	160	180	NA	NA	NA
Priscillas Room	60	80	60	80	40
Leahs Room	50	50	30	60	24
Paulines Room	50	50	30	60	24
Delia's Garden	200	300	NA	NA	NA
Willow Grove	750	1000	NA	NA	NA
Catchings Grove	56	120	NA	70	NA
Cedar Grove	100	120	NA	100	NA
Hayne's Clearing	150	150	NA	150	NA
Atfalati's Hideaway	NA	60	NA	NA	NA
Pat's Corner (available seasonally)	NA	40	NA	NA	NA

Please note that no group is too large to consider.
Speak with a sales coordinator if you have questions about capacity.



ALICE INKLEY ROOM (Basement)

This expansive space is one of the Grand Lodge's larger and most versatile meeting rooms. Its size and open floor plan welcome events of all kinds.
Capacity is 40-75 people.

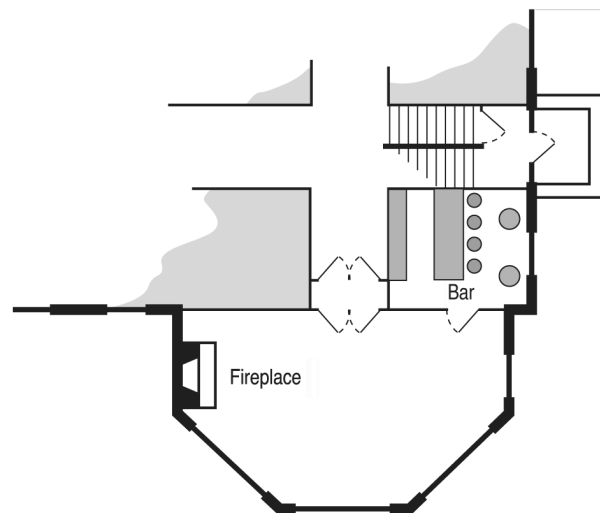


EQUINOX ROOM (First floor west)

One of the Grand Lodge's original sun parlors, the Equinox Room is a bright space that features a beautiful fireplace, hardwood floors and a full-service bar.
Capacity is 10-40 people.

ROUNDER ROOM (First floor east)

This spot offers comfortable chairs and couches along with a vintage fireplace and a view of the gardens through the bow window.
Capacity is 10-40 people.

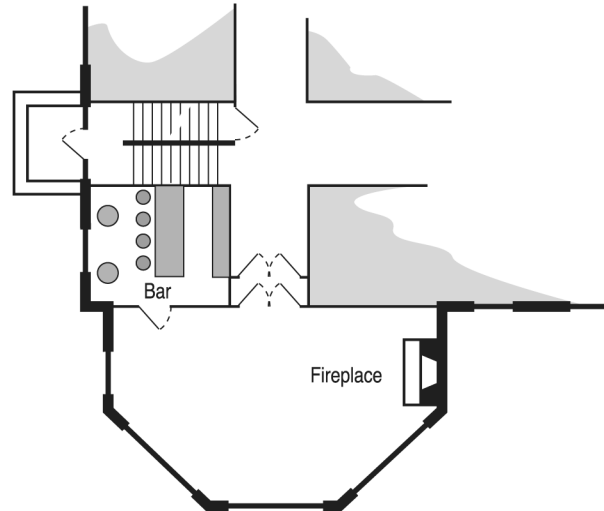




BILLY SCOTT ROOM

(Second floor west)

This sun parlor has the feel of a classic private library, with shelves of books, living room furniture and an original fireplace. An adjoining full-service bar is available.

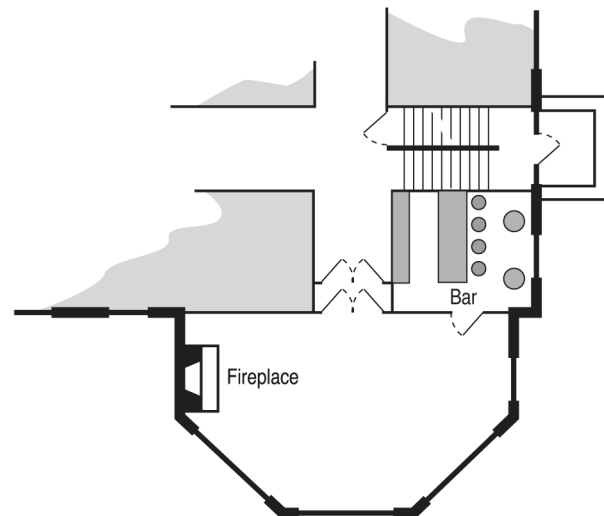


MAGIC FLUTE ROOM

(Second floor east)

Another of the building's original sun parlors, the Magic Flute Room features a vintage fireplace, full-service bar and hardwood floors. Its bank of oversized windows looks out onto the gardens.

Capacity is 10-40 people.

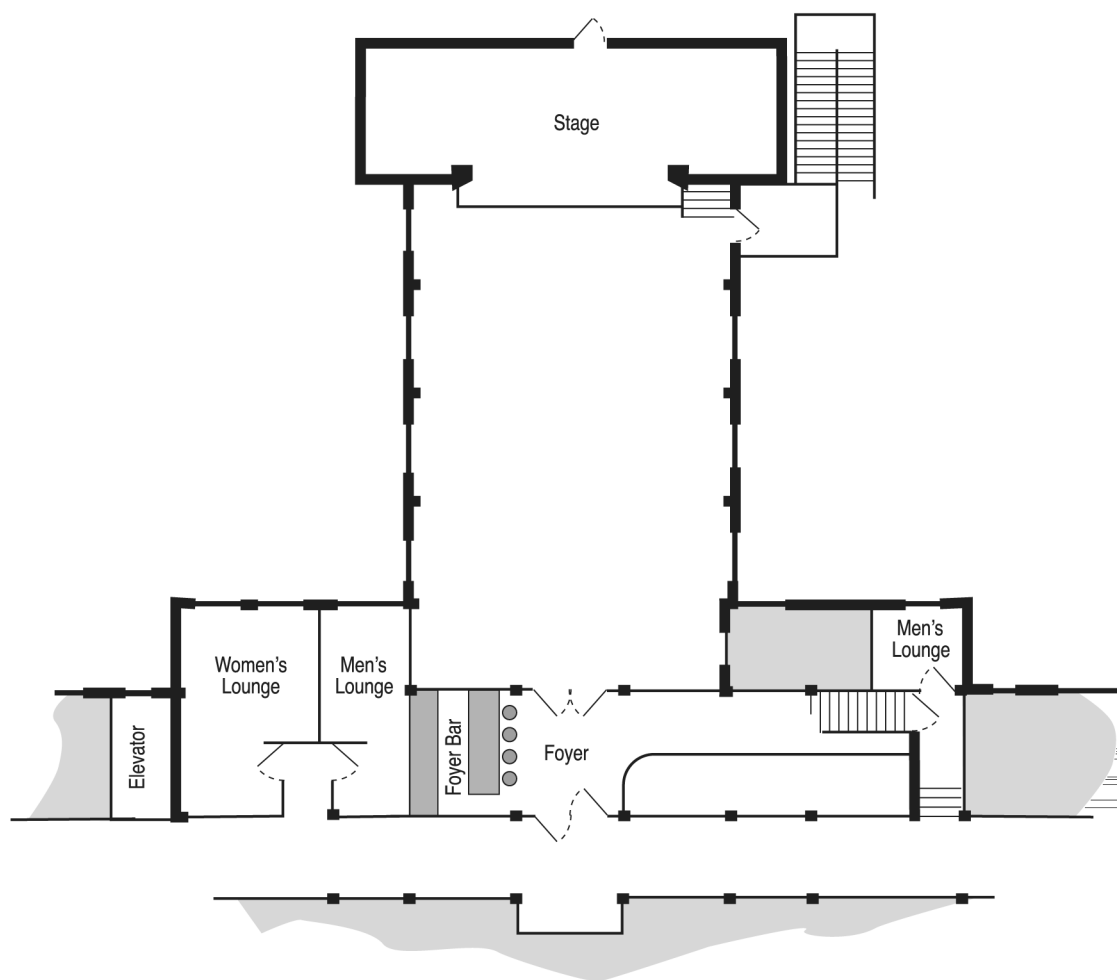




COMPASS ROOM (Second Floor)

This beautifully appointed, vintage auditorium is a versatile space. With an elevated stage and adjoining Foyer Bar, the Compass Room is a perfect setting for all types of large gatherings, including conferences, holiday celebrations, business parties, wedding receptions, live theatrical productions and concerts.

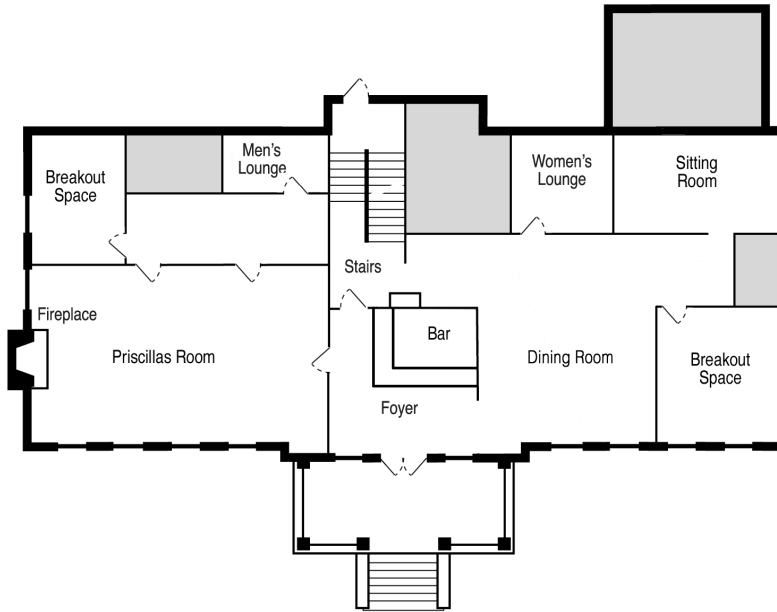
Capacity is 50-150 people.





CHILDREN'S COTTAGE

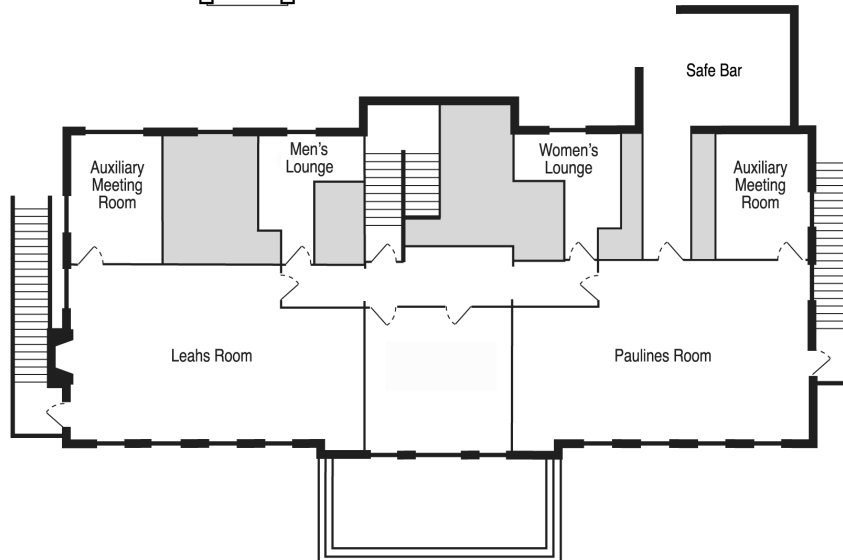
The former orphanage holds a variety of welcoming spaces for your event. You can request just one of the rooms for smaller groups or rent the entire Cottage including its lawn and the Cedar Grove for larger groups (*up to 180 people*). The Cottage itself functions well for weddings as there are small side rooms perfect for serving as the bride and groom's dressing areas.



PRISCILLAS ROOM

(First floor)

This is a bright, open space featuring an original fireplace and large windows looking out onto the beautiful grounds.



LEAHS ROOM

(Second floor)

Groups will find Leahs Room a comfortable meeting place. With an open floor plan and a second-floor view of the gardens, this room is very accommodating.

Capacity is 25-50 people.

PAULINES ROOM

(Second floor)

This bright, second-floor space and open floor plan will suit a multitude of meeting and event needs.

Capacity is 25-50 people.

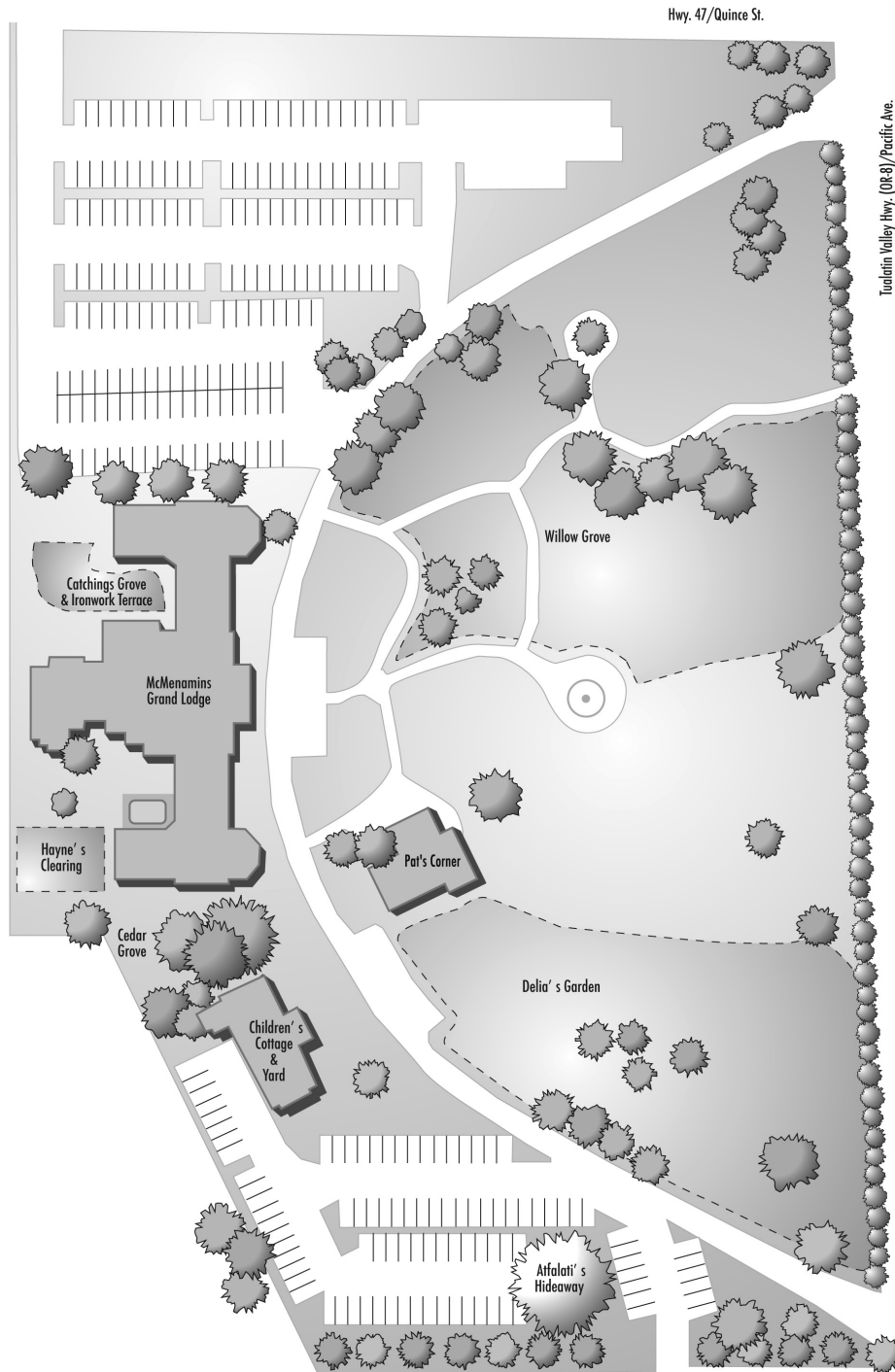




OUTDOOR SPACES

From a sweeping, wide-open lawn surrounded by flowers to a more intimate tree-lined grove with a quaint cottage, the Grand Lodge offers a variety of lovely outdoor spaces for your event. Your guests will enjoy fresh air and beautiful views of the estate. Canopies and tents are highly recommended in case of inclement weather.

Capacity ranges from 120 to 1000 people.



AUDIOVISUAL EQUIPMENT

Overhead Projector	\$30
Slide Projector.....	\$25
wireless with remote.....	\$45
27" TV with VCR & DVD	\$75
Flipchart with Easel	\$20
Dry Erase Board with Markers	\$20
Screen	\$20
Easel.....	\$7
Microphones	\$35
LCD Projector	\$125
Media Package (Compass Room only)	\$250
Media package includes LCD projector, screen, DVD, VCR and sound system.	

Additional audiovisual equipment including professional technical support can be rented.
Prices are subject to change and delivery fees apply to equipment ordered from offsite vendors.

