



VENUE

pricing guide

contents

2	<i>venues</i>
3	<i>inclusions</i>
4	<i>the barn</i>
6	<i>the grainery</i>
8	<i>the belle tower</i>

the venues

Blended seamlessly into the natural landscape are three distinct venues – the traditional Barn, the industrial chic Grainery, and the charming Belle Tower. Red Gate Farms paves the way for once-in-a-lifetime events. Explore each of our unique venues to find the perfect match for your wedding day.

THE BARN & MEADOW



The Barn hosts breathtaking events within its traditional red barn doors and outside in its meadow. Skillfully renovated to hold onto its Southern charm, The Barn will turn your next reason to celebrate into a captivating event.

THE GRAINERY



Once serving as a storehouse, the Grainery has been renovated to provide guests with a venue that is truly incomparable, featuring floor-to-ceiling retractable doors, an ample amount of floor space, and an outdoor amphitheater.

THE BELLE TOWER



The Belle Tower is a cozy, Southern-style home that serves as an intimate small venue for any type of event. Its tastefully-decorated rooms, lush lawn, and wraparound porch create long-lasting memories for guests.



inclusions

- Venue Manager
- Ceremony Location
- Reception Location
- 4.5 hours of Event Time for the Wedding and Reception
- One-hour Ceremony Rehearsal
- Rain-Plan Ceremony Location
- Two-hour access for an engagement photo session
- Use of two touch-up suites
 - up to three hours before the start of the ceremony
- Tables and chairs for the ceremony and reception
- Fans and Heaters are used as needed
- Abundent Guest Parking
- White linens for reception tables
- All set-up & clean-up of included tables, chairs & linens
- Diagram of event
- Specialty lighting throughout Venues and surrounding areas
- Kickstart and 30-Day Final Review
- Personalized Wedding Map
- 48" Sweetheart Table
- Two Restrooms

Additions/Upgrades

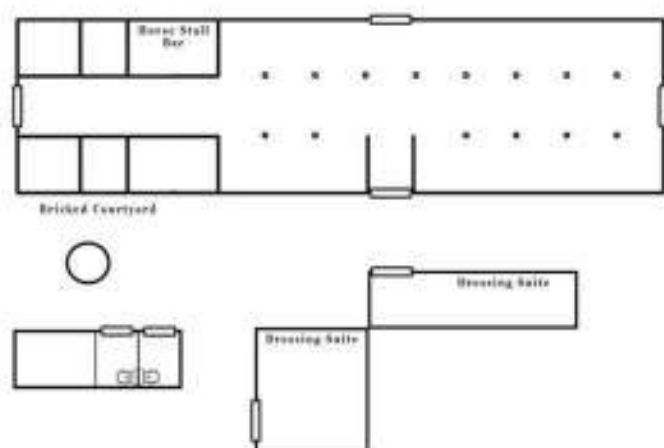
<i>included*</i>	
<i>included*</i>	
<i>included*</i>	
<i>included*</i>	\$1000/hour
<i>included*</i>	\$250/hour
<i>included*</i>	
<i>included*</i>	\$50
<i>included*</i>	\$200/hour
<i>included*</i>	
<i>included*</i>	
<i>included*</i>	
<i>included*</i>	\$20+
<i>included*</i>	
<i>included*</i>	
<i>included*</i>	
<i>included*</i>	
<i>included*</i>	\$100
<i>included*</i>	\$1000

*savings valued at \$18,000

the barn & meadow

size
3,000 sq. ft.
capacity
200 guests

The Barn & Meadow offers a beautiful location for your ceremony and reception. Inside The Barn, you can experience an authentic barn atmosphere accented with beautiful twinkle lights and vintage furnishings. Two of the historic horse stalls inside The Barn, house our extraordinary bar. The Barn overflows with character at every corner and has a brick courtyard with a fire & water fountain. The Meadow directly behind The Barn is complemented by an ancient Oak Tree draped in Spanish moss. This majestic tree along the waterfront is the perfect backdrop for your ceremony and gives a Southern fairytale feel.



features

- Ceremony location at Live Oak overlooking the water, inside The Barn, or in the Meadow
- Bricked courtyard with Fire & Water Fountain
- White draping down the center of the barn
- Vine-wrapped ceiling with café and twinkle lights
- Reception location inside
- Historic Horse Stall Bar
- Antique Accent Furniture
- Two Touch-Up Suites



2023 2024 2025

PEAK SEASON

March, April, May, September, November, & December

MONDAY-THURSDAY	\$3250
FRIDAY	\$6250
SATURDAY	\$7250
SUNDAY	\$5250

OCTOBER

MONDAY-THURSDAY	\$4250
FRIDAY	\$7250
SATURDAY	\$8250
SUNDAY	\$6250

PEAK SEASON

March, April, May, September, November, & December

MONDAY-THURSDAY	\$4000
FRIDAY	\$7000
SATURDAY	\$8000
SUNDAY	\$6000

OCTOBER

MONDAY-THURSDAY	\$5000
FRIDAY	\$8000
SATURDAY	\$9000
SUNDAY	\$7000

PEAK SEASON

March, April, May, September, November, & December

MONDAY-THURSDAY	\$4750
FRIDAY	\$7750
SATURDAY	\$8750
SUNDAY	\$6750

OCTOBER

MONDAY-THURSDAY	\$5750
FRIDAY	\$8750
SATURDAY	\$9750
SUNDAY	\$7750

OFF-PEAK SEASON

January & February

MONDAY-THURSDAY	\$2750
FRIDAY	\$5000
SATURDAY	\$6000
SUNDAY	\$5000

SUMMER SEASON

June, July, & August

MONDAY-THURSDAY	\$2750
FRIDAY	\$4000
SATURDAY	\$5000
SUNDAY	\$4000

OFF-PEAK SEASON

January & February

MONDAY-THURSDAY	\$3500
FRIDAY	\$5750
SATURDAY	\$6750
SUNDAY	\$5750

SUMMER SEASON

June, July, & August

MONDAY-THURSDAY	\$3500
FRIDAY	\$4750
SATURDAY	\$5750
SUNDAY	\$4750

OFF-PEAK SEASON

January & February

MONDAY-THURSDAY	\$4250
FRIDAY	\$6500
SATURDAY	\$7500
SUNDAY	\$6500

SUMMER SEASON

June, July, & August

MONDAY-THURSDAY	\$4250
FRIDAY	\$5500
SATURDAY	\$6500
SUNDAY	\$5500

*15% service fee

**60% retainer to hold date

***pricing over 100 is \$15 per person

****please inquire about pricing on holiday dates and parties over 200



the grainery

The Grainery, a stunningly restored former storehouse, features an open floor plan with floor-to-ceiling retractable doors and a chic industrial design. This unique space provides guests with breathtaking views of the neighboring lake, green fields, and mature trees dotting the surrounding landscape. Adjacent to The Grainery and overlooking the water is an amphitheater, The Champagne Bowl, an ideal location for ceremonies and live performances. A majestic, centuries-old Live Oak veiled in Spanish moss sits directly beside The Grainery and holds the stories of many wedding ceremonies and cocktail hours.

size
4,000 sq. ft.
capacity
200 guests

features

- 20 ft. peaked A-frame ceiling
- Café and twinkle accent lighting
- Amphitheater overlooking the lake
- Climate-controlled reception location
- Waterfront views with Floor-to-ceiling retractable doors
- Ceremony location at the Live Oak tree alongside the building or at the Champagne Bowl



2023 2024 2025

PEAK SEASON

March, April, May, September, November, & December

MONDAY-THURSDAY	\$3250
FRIDAY	\$6250
SATURDAY	\$7250
SUNDAY	\$5250

OCTOBER

MONDAY-THURSDAY	\$4250
FRIDAY	\$7250
SATURDAY	\$8250
SUNDAY	\$6250

PEAK SEASON

March, April, May, September, November, & December

MONDAY-THURSDAY	\$4000
FRIDAY	\$7000
SATURDAY	\$8000
SUNDAY	\$6000

OCTOBER

MONDAY-THURSDAY	\$5000
FRIDAY	\$8000
SATURDAY	\$9000
SUNDAY	\$7000

PEAK SEASON

March, April, May, September, November, & December

MONDAY-THURSDAY	\$4750
FRIDAY	\$7750
SATURDAY	\$8750
SUNDAY	\$6750

OCTOBER

MONDAY-THURSDAY	\$5750
FRIDAY	\$8750
SATURDAY	\$9750
SUNDAY	\$7750

OFF-PEAK SEASON

January, February, June, July, & August

MONDAY-THURSDAY	\$2750
FRIDAY	\$5000
SATURDAY	\$6000
SUNDAY	\$5000

OFF-PEAK SEASON

January, February, June, July, & August

MONDAY-THURSDAY	\$3500
FRIDAY	\$5750
SATURDAY	\$6750
SUNDAY	\$5750

OFF-PEAK SEASON

January, February, June, July, & August

MONDAY-THURSDAY	\$4250
FRIDAY	\$6500
SATURDAY	\$7500
SUNDAY	\$6500

*15% service fee

**60% retainer to hold date

***pricing over 100 is \$15 per person

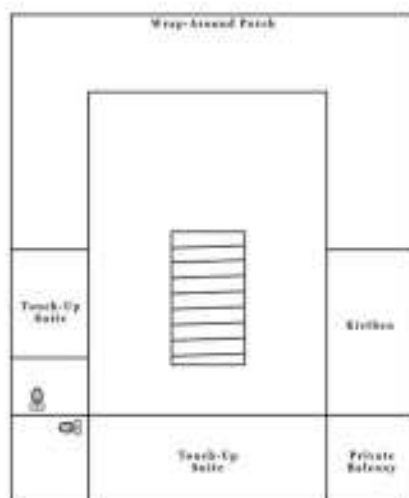
****please inquire about pricing on holiday dates and parties over 200



the belle tower

size
3,000 sq. ft.
capacity
50 guests

The Belle Tower is the heart of Red Gate Farms and was the Dream Home of Patty and Dickie. To many on the property, it is identified by different names: The Belle Tower, Mama's House, Grandma's, and The Eagle's Nest. All of the nicknames relate to the strong woman who lived within these walls and her presence on the farm. Grandma Patty used to perch on the top porch and admire the beautiful farm she grew up on. Every night, she left her lights on especially in the belle tower to send a warm welcome and goodbye to all who were traveling through. The Belle Tower is now used for events and offers a place of comfort and intimacy. It is the perfect venue for intimate gatherings or if your dream is a Southern home wedding.



features

- Wrap-around upstairs porches with panoramic views of Red Gate Farms and perfect for entertaining
- Beautiful Oak Orchard views and views of surrounding ponds
- Ideal for events with fewer than 100 people
- Landscaped meadows and horse paddock
- Intimate Touch-Up Suites
- Spacious Parking

2023 2024 2025

OCTOBER

MONDAY-THURSDAY	\$3250
FRIDAY	\$6250
SATURDAY	\$7250
SUNDAY	\$5250

OFF-PEAK SEASON

MONDAY-THURSDAY	\$2750
FRIDAY	\$5000
SATURDAY	\$6000
SUNDAY	\$5000

OCTOBER

MONDAY-THURSDAY	\$4000
FRIDAY	\$7000
SATURDAY	\$8000
SUNDAY	\$6000

OFF-PEAK SEASON

MONDAY-THURSDAY	\$3500
FRIDAY	\$5750
SATURDAY	\$6750
SUNDAY	\$5750

OCTOBER

MONDAY-THURSDAY	\$4750
FRIDAY	\$7750
SATURDAY	\$8750
SUNDAY	\$6750

OFF-PEAK SEASON

MONDAY-THURSDAY	\$4250
FRIDAY	\$6500
SATURDAY	\$7500
SUNDAY	\$6500

*15% service fee
**60% retainer to hold date
***pricing over 100 is \$15 per person
****please inquire about pricing on holiday dates and parties over 200