

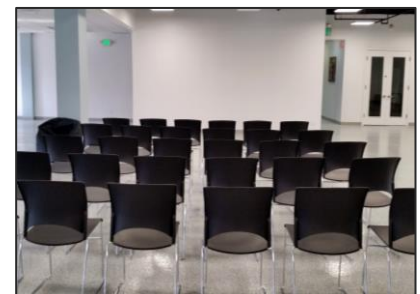
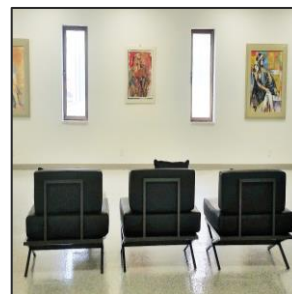
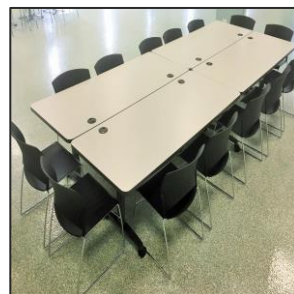
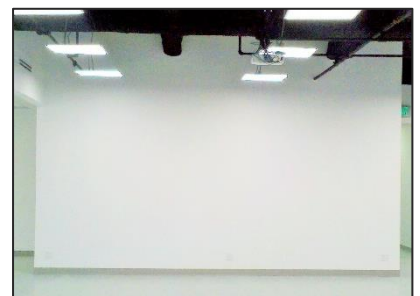
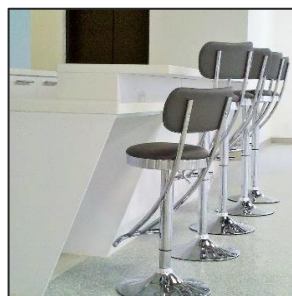
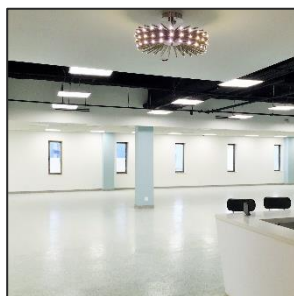


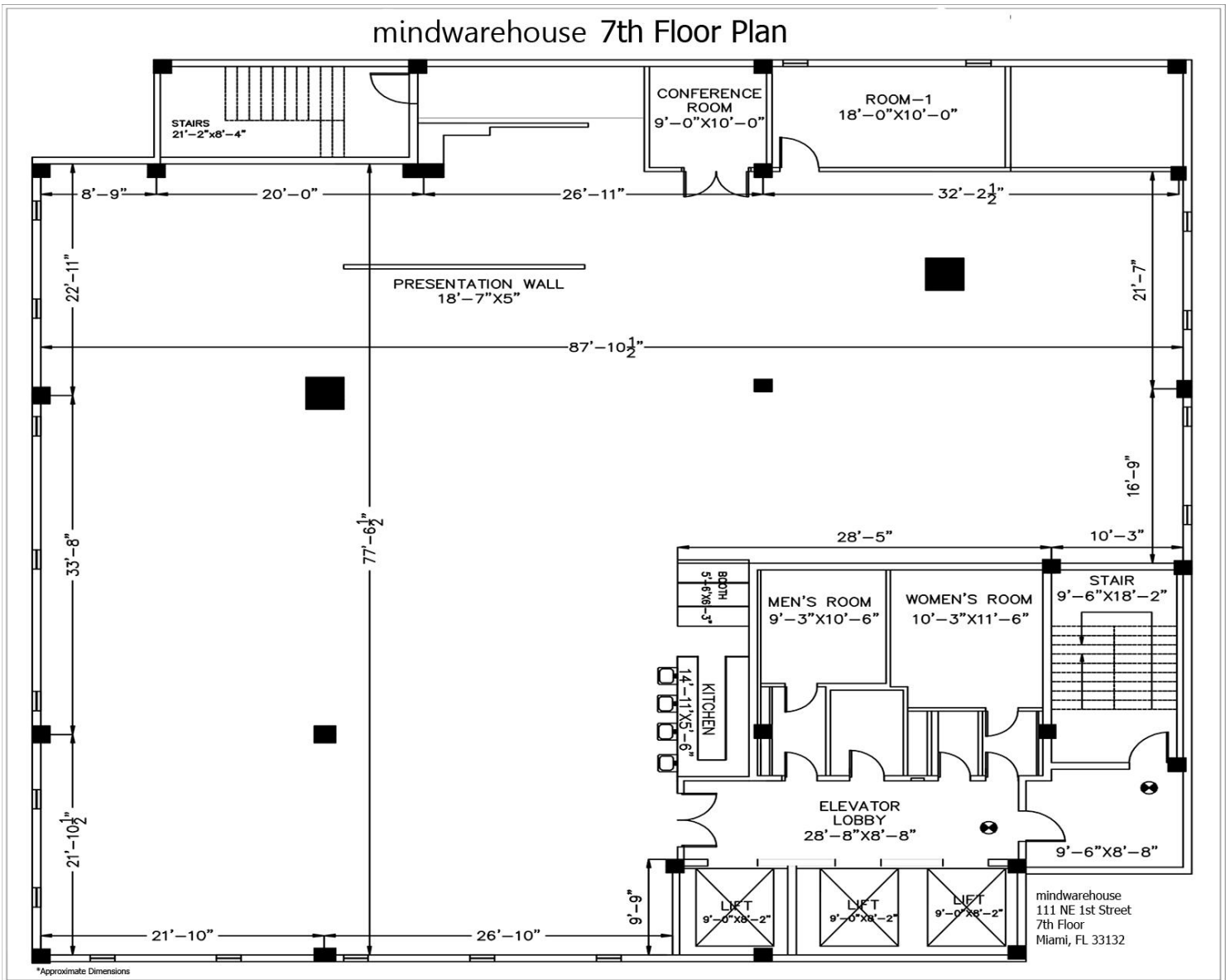
Located in the Downtown Miami Historic District, mindwarehouse | Connect is a dynamic work space. From startup presentations and business conferences to art and fashion events, the open space is a blank canvas that can be easily customized to fit your needs. The space which encompasses a full floor can be set up in theater, banquet, classroom or any other configuration style required for an event. The 126 square foot projector wall is perfect for providing visual content from screening movies to presentations. There is also a serving area which is great for setting up a bar or buffet.

Not only was the contemporary space intended to be flexible but it was also designed with the environment and sustainability in mind. Modern LED and fluorescent lighting help save energy while high efficiency water fixtures conserve water. Many materials in the space contain recycled content and the paint is zero VOC. The space is also centrally located to various public transit options including the Miami-Dade Metrorail and Metromover systems as well as trolley and bus routes. Please contact us for a tour.

Indoor Space: approximately 7,200 square feet

Reception Capacity: 200





mindwarehouse is conveniently located near Metrorail (Government Center), Metromover (First Street), and the Coral Way trolley routes. Numerous bus routes also stop right in front of the building.

On street parking may be available (payment can be made via PayByPhone App or machine).

A couple of parking options which are close by include the following:

Miami Parking Authority Lot/Garage:

Lot 41

120 NE 2nd Street
Miami, FL 33132

Payment Method:
Automated Attendant

Garage No. 3

College Station Garage
190 NE 3 Street (at NE 2 Avenue)
Miami, FL 33132
Entrances from:
NE 2 Street as well as NE 3 Street

Payment Method:
Automated Attendant