

Facility Features



The Center's unique architecture is enhanced by a formal porte-cochère embraced by a seemingly-endless covered porch. A wide, glass-filled, double entry opens to an invitingly spacious lobby resplendent with water feature, unique decor, and reception station. Valet parking is a welcoming added touch.

- Two-floors, 44,000 total sq. ft., of event accommodations
- Banquet Hall
- Master-grade Kitchen
- Full-Service Catering
- Executive Chef
- Gymnasium
- Meeting Rooms
- Lecture Hall
- Auditorium & Cafe
- 20 Acre Event/Sport Field
- Concession Stand
- Formal Lobby & Reception Area
- Experienced Event Staff
- Elevator Service
- Storage Rooms
- Expansive Parking

Amenities

- Global Communications
- Professional-Grade Audio/Video (A/V) Throughout
- High-Speed Wireless Internet
- Video Production Services
- On-site, Full-Service Catering

Additional Features

- Professional Event Planning & Coordination
- Vendor Coordination



NEW HOPE EVENTS CENTER
7675 Davis Blvd • Naples, FL 34104 • (239) 348-0122
www.NewHopeEventCenter.com

New Hope Event Center

NAPLES, FL

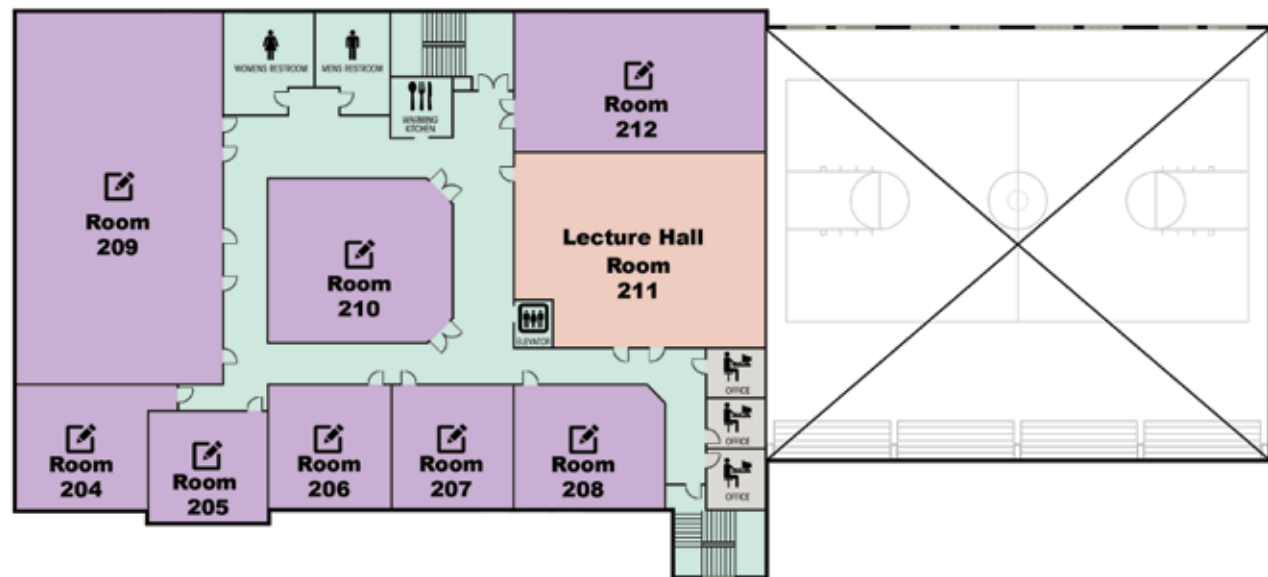
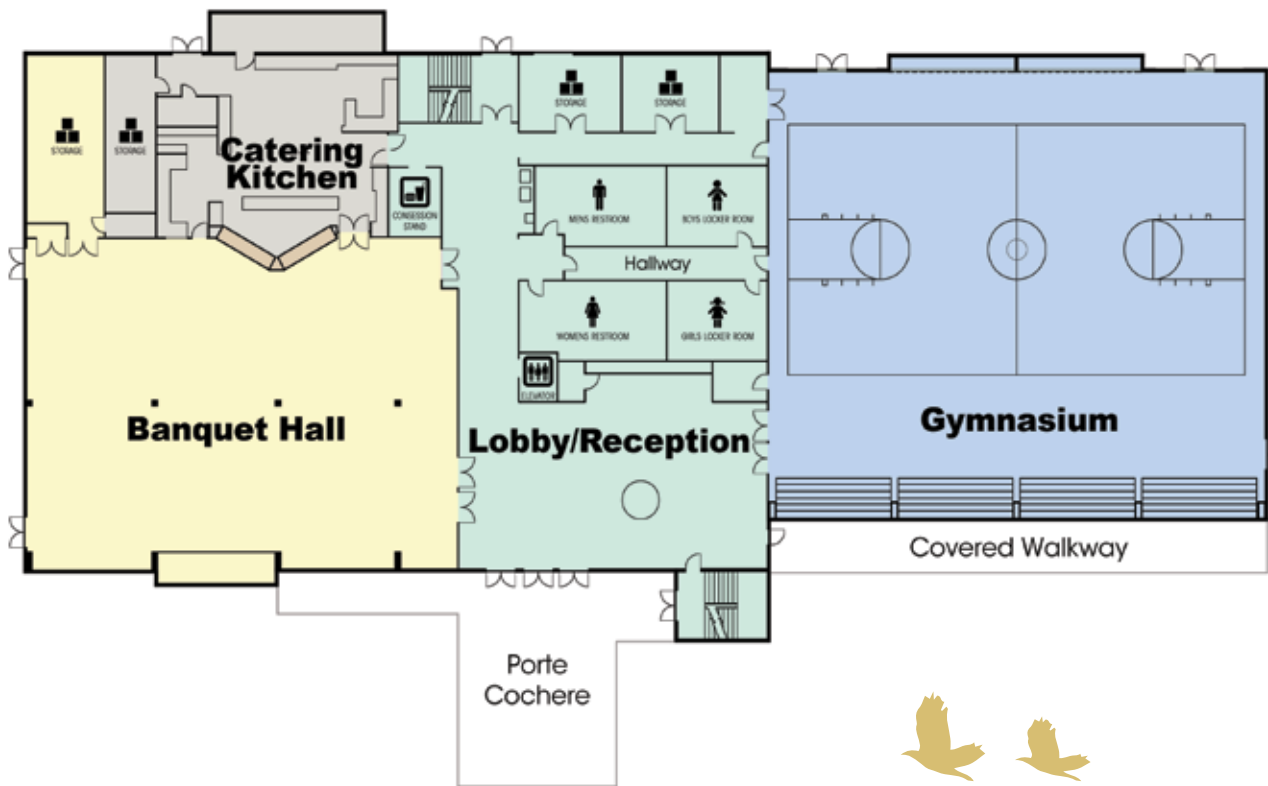
From intimate family gatherings to social events of 750 plates or more, all inquiries are welcome.



Floor Plans

Fees & Charges

First Floor



Second Floor



SQUARE FEET



BANQUET SEATING



THEATER SEATING



HOURLY



DEPOSIT*



DAMAGE DEPOSIT

	SQUARE FEET	BANQUET SEATING	THEATER SEATING	HOURLY	DEPOSIT*	DAMAGE DEPOSIT
BANQUET HALL	5,808	350	500	\$200	\$500	\$500
GYMNASIUM	9,027	-	600	\$125**	\$500	\$500
CLASSROOM 204	678	-	34	\$75	\$100	\$100
CLASSROOM 205	539	-	27	\$75	\$100	\$100
CLASSROOM 206	631	-	32	\$75	\$100	\$100
CLASSROOM 207	631	-	32	\$75	\$100	\$100
CLASSROOM 208	764	-	38	\$75	\$100	\$100
CLASSROOM 209	3,006	-	200	\$150	\$100	\$100
CLASSROOM 210	1,127	-	75	\$125	\$100	\$100
CLASSROOM 211	1,916	-	100	\$150	\$100	\$100
CLASSROOM 212	1,436	-	75	\$125	\$100	\$100
PARKING LOT & FIELD RENTAL	-	-	-	\$200	-	-

One Time Fees:

Easel/Flip Chart/White Board	\$5
Computer With Projector	\$150
Administrative Fee	\$50
Dance Floor Rentals	\$300
Wireless Microphone	\$25

Food and Beverage Charges Determined on a Individual Contractual Basis.

Included: food, linens, plates, silverware, glassware, tables (6' round) and chairs, beverage station with coffee, tea or water, trash removal.

Hourly Fees Tasks:

Facility/Event Coordinator	\$45
Cleaning/Maintenance Personnel	\$30
Sound & Video System Technician	\$45
Setup/Breakdown Assistance	\$45
Valet Parking	\$30

If servers are required, there will be an additional one time charge determined at time of contract.

* Non-refundable deposit with contract

** Gymnasium for non-sporting events, additional \$75

All facilities have a 3 hour minimum rental.