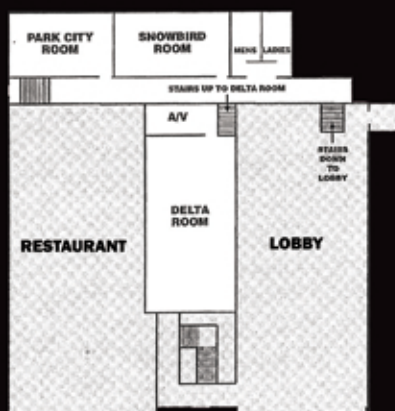




## MEZZANINE



## LOWER LEVEL



ROOM	DIMENSIONS	SQ. FT.	THEATER	BANQUETS	CLASSROOM	CONFERENCE	U-SHAPE	HEIGHT
PARK CITY	26 x 15	390	48	30	20	24	20	9'
SNOWBIRD	28 x 15	420	48	30	20	24	20	9'
DELTA	20 x 43	860	80	60	45	46	46	7'
STATE	22 x 26	572	N/A	35	N/A	N/A	N/A	7'
BROADWAY	17 x 27	459	48	32	30	20	20	8'
ALTA	17 x 27	459	48	32	30	20	20	8'
BRIGHTON	17 x 27	459	48	32	30	20	20	8'
CANYON	17 x 27	459	48	32	30	20	20	8'

## ACCOMMODATIONS

- 73 Newly appointed rooms with 11 suites
- 100% Non-Smoking
- New Tempur-Pedic Beds
- High Speed Wireless Internet
- iPod Docking Stations
- Flat Screen TV's
- New linens and bath amenities

## AMENITIES

- Comp Business Center
- Comp Fitness Center
- Comp morning Starbucks coffee
- Managers Evening Reception every Wednesday
- Full service concierge and bell staff

## DYNAMIC MEETINGS

- 4,200 sq ft of flexible meeting space
- Elegant themed events in our Grand Historic Lobby
- Ample parking
- In-house state of the art audio/visual
- Full Convention Services on site



## LOCATION

- Located in the Theater District
- 68 restaurants & 27 night clubs within a 2 block radius
- 2 blocks from the Salt Palace
- 3 blocks from Temple Square
- 3 blocks from the Energy Solutions Center, home of Utah Jazz
- 30 mins from world class skiing

